



Smile 431

# Smile 431

with European electricity standard

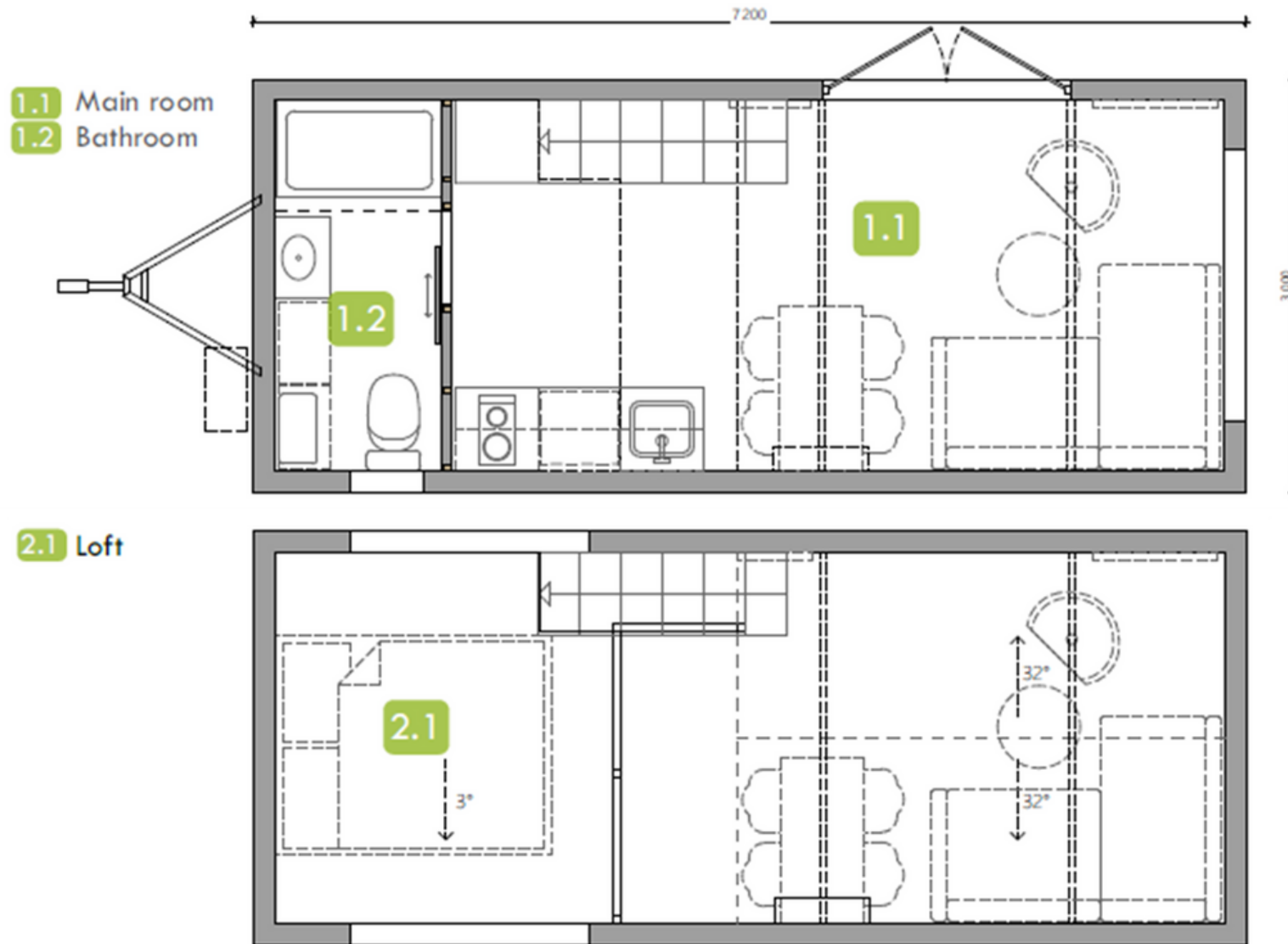
Smile is an ideal alternative to a mobile home for those who prefer more space. In this cozy Tiny House, you will find a kitchenette, a bathroom with a shower, a sleeping loft, and a spacious living area with large windows that you can arrange according to your needs.

**This house is available for immediate delivery.**



34 500 € (ex. VAT)

# Floorplan





## EXTERIOR

- Length: 7,2 m; width: 3,00 m; height: 4 m
- Steel frame with wheels (for adjustment purposes only)
- Spruce and metal siding
- Well insulated 2-pane PVC windows and double exterior door from tempered glass
- Lightweight and durable aluminum roof
- Winter insulated with mineral wool

# INTERIOR

- 25 sqm living area
- Room height of 3,26 m
- Spacious sleeping loft
- Siding from spruce panel
- Laminate ground floor & spruce loft floor





## KITCHEN

- Lower and upper cabinets with white fronts
- Induction cooktop (2 fields)
- Small fridge/freezer
- Kitchen hood
- Three-layer oak board countertop

# BATHROOM

- Wet-room approved shower walls from fibo trespo panels, rest of the bathroom: spruce panels
- Sliding door
- Laminate floor
- Flush toilet
- Cupboard with washing basin
- Shower cabin with curtain
- Energy-saving electric hot water heater





## LOFT

- Spacious sleeping loft with rung loft railing



# FURNISHING

- Exterior stairs
- Stair to sleeping loft with storage
- TV preparation



# Technical Specifications

## DIMENSIONS & WEIGHT

- Length: 7,2 m
- Width: 3 m
- Height: 4 m
- Steel frame with wheels

## EXTERIOR

- Spruce & metal siding
- Well insulated 2-pane PVC windows and exterior double door from tempered glass
- Lightweight and durable aluminum roof
- Winter insulated with mineral wool

## INTERIOR

- 25 sqm living area
- Room height of 3,26 m
- Spacious sleeping loft
- Siding from spruce panel
- Laminate ground floor & spruce loft floor

## KITCHEN

- Lower and upper cabinets with white fronts
- Induction cooktop (2 fields)
- Small fridge/freezer
- Kitchen hood
- Three-layer oak board countertop

## BATHROOM

- Wet-room approved shower walls from fibo trespo panels, rest of the bathroom: spruce panels
- Sliding door
- Laminate floor
- Flush toilet
- Cupboard with washing basin
- Shower cabin with curtain
- Energy-saving electric hot water heater

## FURNISHING

- Exterior stairs
- Stair to sleeping loft with storage
- TV preparation

## HEATING

- Air-to-air heat pump

## PLUMBING

- Easy exterior connection
- Stainless steel pipes
- Energy-saving electric hot water heater

## ELECTRICITY & VENTILATION

- European standard: 3 phase 400 V, 32 A
- LED lamps
- Ventilation in living room, kitchen and bathroom

## DELIVERY INFO:

Get Smile 431 delivered directly to your doorstep & help with the setup. Based on your preferred address we calculate the delivery cost.



## Vagabond Haven

Nysätra Hammarby 21,  
749 63 Örsundsbro, Sweden

www.vagabondhaven.com  
info@vagabondhaven.com  
Tel: +46 (0)18 25 88 99

**Contact Person:** Manuel Kohout

Description	Price in € ex VAT
<b>Smile 431</b>	
Installation service	
Metal frame with wheels + 8 support legs	
Roof and exterior corner frames: Aluminum	
Timber frame; 1 loft	
Insulation: Mineral wool	
Exterior siding: Spruce + metal sheets	
Interior siding: Spruce	
Groundfloor: Laminate	
Loft floors: Spruce	
PVC windows and double door (90+90 cm)	
FIBO plywood ceiling	
Country specific electricity: European standard: 3 phase 400 V, 32 A	
LED lights	
<b>Bathroom</b>	
Bathroom wall with sliding door, plumbing & ventilation	
Bathroom floor: PVC	
Flush toilet	
Bathroom cabinet with single door and washing basin	
Shower with curtain	
Electric water boiler	
Washing machine preparation	
<b>Kitchen</b>	
Sink cabinet	



Countertop for a fridge (1107)	
Small fridge	
Cabinet with 3 drawers	
Kitchen hood with cabinet	
2 wall cabinets with door	
Protective glass behind countertop	
Induction cooktops (2 fields)	
<b>Living room</b>	
TV preparation	
Stairs to the mezzanine with barrier	
Wardrobe under stairs	
Curtain rods	
<b>Loft above the bathroom</b>	
Rung railing	
<b>Heating</b>	
Air-to-air heat pump - Gree Pular	
<b>Additional furnishing</b>	
Exterior stairs (double)	
Transport to	?
<b>Grand total in € ex. VAT</b>	<b>34500</b>
<b>Grand total in € incl. 8,1% VAT</b>	<b>37157</b>
<b>Grand total in € incl. 19% VAT</b>	<b>41055</b>
<b>Grand total in € incl. 20% VAT</b>	<b>41400</b>
<b>Grand total in € incl. 21% VAT</b>	<b>41745</b>
<b>Grand total in € incl. 22% VAT</b>	<b>42090</b>
<b>Grand total in € incl. 23% VAT</b>	<b>42435</b>
<b>Grand total in € incl. 24% VAT</b>	<b>42780</b>
<b>Grand total in € incl. 25% VAT</b>	<b>43125</b>



# Smile 431

## Material & Color Choices

House part	Color choice
<b>Exterior facade &amp; Exterior window/door frames</b> <ul style="list-style-type: none"> <li>• <a href="#">Colors</a></li> </ul>	Oak AU 706
<b>Inner cladding</b> <ul style="list-style-type: none"> <li>• <a href="#">Colors</a></li> </ul>	White D410
<b>Interior window &amp; door frames</b> <ul style="list-style-type: none"> <li>• <a href="#">Osmo colors</a></li> <li>• <a href="#">Water paint colors</a></li> </ul>	White D410
<b>Windows and entrance door</b> <ul style="list-style-type: none"> <li>• <a href="#">PVC options</a></li> </ul>	Doubledoor: glass Windows / door: Anthracite outside, white inside
<b>Roof &amp; exterior corner frames in metal</b> <ul style="list-style-type: none"> <li>• Aluminum – <a href="#">Options</a></li> </ul>	Anthracite
<b>Main room floor (kitchen &amp; living room)</b> <ul style="list-style-type: none"> <li>• <a href="#">Options</a></li> </ul>	Laminate D4584 Oak Fantasy
<b>Shower walls</b> <ul style="list-style-type: none"> <li>• Fibo: <a href="#">Options</a></li> </ul>	Fortissimo Denver White - 3091L00
<b>Bathroom floor</b> <ul style="list-style-type: none"> <li>• PVC floor: <a href="#">Options</a></li> <li>• Coated plywood floor: <a href="#">Options</a></li> <li>• Laminate floor: <a href="#">Options</a></li> </ul>	Laminate D4584 Oak Fantasy
<b>Lights</b>	White



<ul style="list-style-type: none"> <li>• White or black</li> </ul>	
<p><b>FURNITURE</b></p> <ul style="list-style-type: none"> <li>• <a href="#">Body of cabinets</a></li> <li>• <a href="#">Fronts</a></li> <li>• <a href="#">Countertops</a></li> </ul>	<p><u>Body of cabinets</u>: White  <u>Fronts</u>: Brilliant White  <u>Countertops</u>: Osmo 3164</p>
<p><b>Protective glass behind kitchen countertop</b></p> <ul style="list-style-type: none"> <li>• Milky tint or any RAL color</li> <li>• <a href="#">Graphic options</a></li> </ul>	<p>White</p>