



TROMOX

**Born
for cool
riding**

2023 PRESS KIT

TROMOX

Brand Core Value:

Unconventional Interconnection Passion

Founded in 2018 in Asia (Hangzhou), **TROMOX** has its sights on becoming a global leader in smart, two-wheel electric mobile vehicles. To achieve this, this passionate and daring manufacturer has always focused its efforts on **small, playful and agile machines** (less than 115kg) that use removable batteries, smartphone-enabled technology and zeroemission propulsion to **bring out the fun « and the cool » in riding**. After many years in the two-wheeler industry, company founder Porter Chen and his team wanted to offer a **fun and offbeat product addressed primarily to the world's youngest riders**. With their oftenzesty colours, small proportions and salient angles, Tromox bikes attract the hyperconnected generation Z: **lovers of advanced technology and beautiful bikes**. In a world where vehicle carbon emissions are top-of-mind, **TROMOX** wants to **provide innovative solutions** for its electric machines, which are as light and attractive for everyday use as they are easy to ride and very responsive to acceleration.

To win this 100% electric challenge, **TROMOX** relies on the cultural diversity of its teams. Each machine combines a **design conceived in Europe** and inspired by the greatest Italian motorcycle style canons with avant-garde, environmentally-friendly technology developed in-house in Asia. The Mino, affectionately known as the «Pocket Rocket» by customers, is inspired by the curves of the hummingbird, while its intelligent VCU and APP control unit come straight from the minds of in-house engineers. With an **increasing number of Tromox teams present on all continents**, the company is **adapting its marketing and products to each region of the world to attract more buyers**. The company also relies on the importance of online networks through Facebook, Instagram and YouTube to further improve its visibility and promote its products.



01
2018: the brand is born in Hangzhou (Asia)



02
Headquarters: Hangzhou (Zhejiang province)



03
Design team based in Europe



04
Production and electronic system R&D centre based in Zhejiang



05
15,000 m² of production and office space worldwide



06
2019: Mino, the first Tromox product, is launched



07
2020: Mino becomes the first vehicle sold in Europe

TROMOX main values



08
36: number of countries where Tromox products are sold today



09
150: number of current Tromox employees worldwide



10
200,000+ followers on Facebook



11
7,000+ followers on Instagram



12
10,000,000 views on YouTube and a presence on TikTok and direct-to-consumer



Autonomy

100 km*
*20km/h
75kg

Top speed

90 km/h

Net weight

110 kg



Smart Key



App



NFC

TROMOX UKKO AT

Expanding the range

“

The Tromox Ukko S is perfectly adapted to **urban driving and dense traffic**, thanks to its limited size. The Ukko AT, which uses the same platform, will open up new horizons for Tromox by extending its range. This new vehicle is perfectly adapted to enjoy in the heart of the big city and to take on an jaunt to the suburbs and beyond, where the roads can get rockier. With its all-terrain tires, stronger shock absorber, leading-edge BMS battery and more powerful mechanics, **the Ukko AT is faster and more relaxing, while also being even safer in deteriorating road conditions.**

MC10



Autonomy

120 km*
*20km/h
75kg

Top speed

90 km/h

Net weight

90 kg



Smart Key



App

and MC10 *of possibilities*

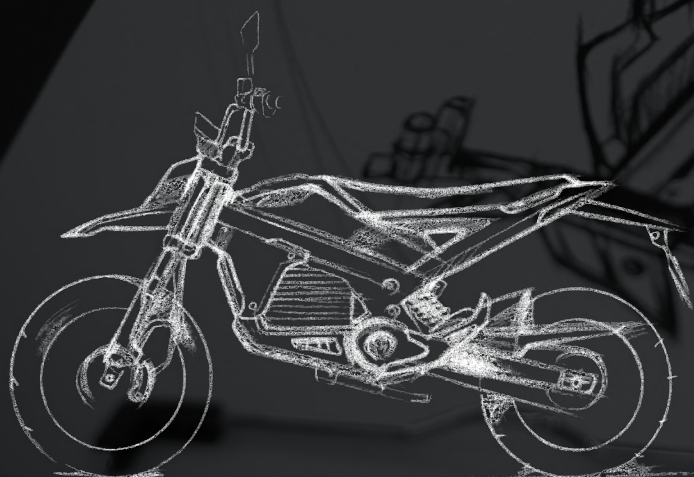
And if adventure is your maxim, Tromox opens up the field of possibilities with the new MC10. **Taller and slimmer, it will allow you to push your driving experience even further, so you can try off-roading in addition to paved roads.** Even more versatile with its large 19-inch front wheel and 280mm ground clearance, the MC10 can go from a morning ride in the heart of the city to an afternoon escape to the countryside.

”

design

Innovative yet constantly evolving, Tromox boasts ties to Europe on top of its Asian roots.

With a design office **based in Italy**, the company **brings the emblematic features of some of the most beautiful Italian motorcycles** to its vehicles. Tromox's seven in-house designers bring strong stylistic references to every vehicle and to the brand.



Tromox vehicles' ergonomics and driving position are important elements.

Both are developed using **computer simulations** that allow the designers to build clay models that are then tested on drivers of different sizes. These tests allow the designers to make changes directly to the clay models and **find the best driving position** based on the testers' feedback.



Ergonomic Sitting Posture Design



Good driving posture



Comfortable handling experience



Reasonable bend veering



Light-Weight Design

TROMOX focuses on structure design, pursues light-weight and adopts man-machine theory to cater to the needs of the users and meet a wide variety of usage scenarios.

TROMOX

MC10

“

With a minimalist style that highlights its essential components, the **TROMOX MC10** updates the classic lines of off-road vehicles, thanks to its long, tapered seat.

Particularly appealing to the **younger set**, the **MC10** performs equally well **on the road and as well as on trails**, thanks to its imposing front end. Its beautiful inverted fork and **150 mm clearance coexist with a high fender and LED lighting** perfect for exploring trails and the city centre.

”



TR-3C REAR SUSPENSION SYSTEM

To improve handling and comfort on bumpy roads, the MC10 has adopted an independent four-link rear suspension system with an enjoyable, adjustable Yuan shock mounted in the middle. With 50mm of clearance, this shock absorber allows you to attack rocky roads without fear.

DUAL BATTERY PARALLEL SYSTEM

To cope with different usage scenarios, the MC10 can be equipped with one or two 72V30Ah lithium batteries, for more or less range. Mounted in parallel and developed and assembled with our suppliers, **these BMS batteries are easily transportable** and generate power of 2.16 kWh each.



WRAP-AROUND ALL-ALUMINIUM FRAME

With its **unique and minimalist design**, the MC10's frame is as comfortable on the road as it is visually appealing. The aluminum frame gives it the **desired lightness**, while its design gives it **stability and resistance to shocks**.

STRONG POLYGON MID-MOTO

The MC10 is equipped with a **permanent magnet synchronous motor**, mounted in the centre of the chassis with a gearbox. With a peak power of 10kW (5kW of continuous power) at 72V, it makes for **fast, instantaneous acceleration**.



Cross the new landscape



Specifications

Model	MC10	Turn Signal	LED Flowing lights
Type	Electric off-road	Seat Cushion Lock	Mechanical
Size	1987×820×1180 mm	Reverse Gear	Yes
Weight	90 kg	Intelligent Systems	4G VCU
Frame	Aluminium	Tromox APP	Yes
Steering Handle	Aluminium Reducers	OTA Cloud Upgrade	Yes
Upper / Lower Clamp	Aluminium	Dashboard	VA screen
Front Suspension	Inverted spring hydraulic damping type	Start	Remote control, Tromox APP
Rear Suspension	Mid-mounted spring-damped	Motor	Peak power 10 kW mid-mounted motor
Front / Rear WheelL	Spoked rims	Controller	FOC
Tire	Front: 70/100-19 Rear: 70/100-17	Battery	72V30 Ah
Seat Height	850 mm	Charger	10 A
Ground Clearance	280 mm	Charge Time	Single battery 3 h, Dual batteries 6 h
Brakes System	CBS	Charge Ways	Vehicle charging and battery charging
Rear Fork	Aluminum alloy, double swing	Peak Speed	Single battery: 75 km/h Dual batteries: 90 km/h
Drive	Chain	On-Wheel Torque	280 N·m
Headlight	LED	Range	120 km*

* The value of autonomy may vary considerably depending on the test environment. The results are based on the actual data of the vehicle speed test at a constant speed of 20km/h, with a rider weighing 75kg, and an ambient temperature of 25°C.



TROMOX Ukko AT

“ With its 16” front wheel, the new **Ukko AT** is a bit bigger and even more versatile than its close cousin the Ukko S.

Thanks to its technical improvements this 100% electric vehicle **can ride on all kinds of terrain**, both in and around large cities. Along with its look and **compact size**, these qualities should attract both young and older riders alike.

”



POWER LED DISPLAY

The available power on the **Ukko AT** is clearly visible thanks to its practical vertical display on the mock fuel tank.

LARGER AND WIDER VACUUM TIRES WITH HARD-WEARING AND GRIP FUNCTION

When the road gets rough, the **Ukko AT**'s spoked wheels get tougher. Less sensitive to heavy impacts, they offer **resistance to wear and tear**, as well as **great grip** thanks to their tread pattern. The efficient Journey tires have been specially developed for this purpose.



HIGH-PERFORMANCE MID-MOUNTED MOTOR

Like the **MC10**, the **Ukko AT** has a central permanent magnet synchronous motor with gearbox but its design and power are different. **At its peak, it offers 8 kW (4 kW of continuous power) at 72 V and 220 Nm of torque at the rear wheel. Enough for all-day fun!**

TROMOX APP

Permanently connected to your **Ukko AT**, the **TROMOX App** allows you to travel smart. As well as **recording your journeys**, it can also give you **information about your battery charge status, driving habits and vehicle location**, as well as allowing you to **update to the OTC cloud**. All the benefits of the best possible system, every day!



Explore out of bounds



Specifications

Model	Ukko AT	Seat Cushion Lock	Mechanical
Size	1940×800×1140 mm	USB Charger	Yes
Weight	110 kg	Fixed-Speed Cruise Control	Yes
Frame	Aluminium cast type	Warning Double Flashers	Yes
Steering Handle	Aluminium split	Reverse Gear	Yes
Upper / Lower Clamp	Aluminium	Intelligent Systems	Intelligent central control VCU with integrated Anti-burglary devices
Rear Handrail	Aluminium monolithic	Tromox APP	Yes
Front Suspension	Converted/Spring oil damped type	OTA Cloud Upgrade	Yes
Rear Suspension	Mid-mounted integral airbag spring damping type	Dashboard	TFT Screen
Front / Rear Wheel	Aluminium	Start	Smart Key, Tromox APP, NFC
Tire	Front: 100/80-16 Rear: 110/90-14	Motor	4kW with single-reduction, gearbox, peak 8kW
Seat Height	825 mm	Controller	FOC
Ground Clearance	200 mm	Battery	72V50Ah
Brakes System	CBS Hydraulic Brake System	Charger	10A
Rear Fork	Aluminum alloy, double swing	Charge Time	5h
Drive	Chain	Charge Ways	vehicle charging and battery charging
Headlight	LED	On-Wheel Torque	220N·m
Turn Signal	LED Flowing lights	Top Speed	90km/h
Range	100km*		

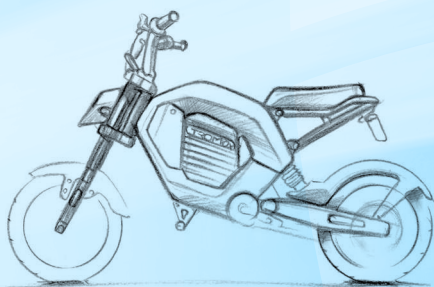
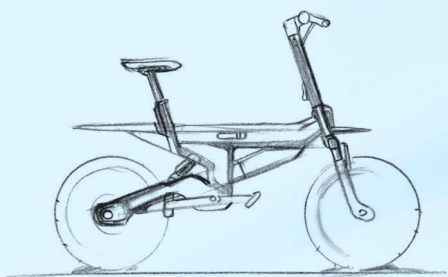
* The value of autonomy may vary considerably depending on the test environment. The results are based on the actual data of the vehicle speed test at a constant speed of 20km/h, with a rider weighing 75kg, and an ambient temperature of 25°C.



“

In addition to the new **MC10** and **Ukko AT**, **TROMOX** is also focusing on **micro-mobility**, offering you the opportunity to discover its **first E-Bikes** and **folding electric scooters** at **EICMA 2022**.

”



TROMOX

www.tromox.com