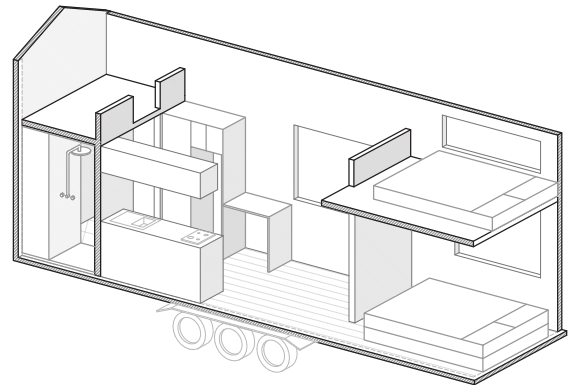
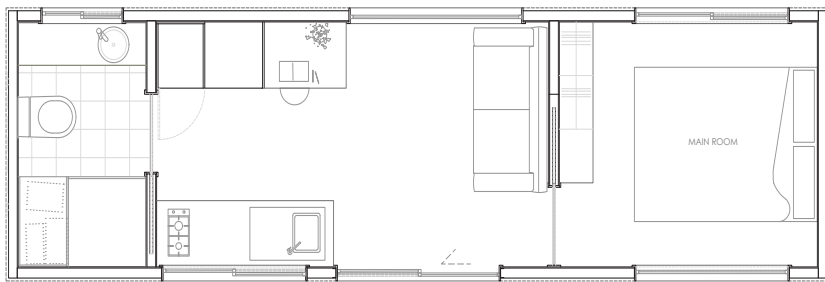


The Banksia



Our single level tiny house with spacious bedroom and multiple loft options!

Specifications

8.5m x 2.4m Trailer

Overall:
10.1m x 2.5m x 4.3m

Bedroom

Queen size main bedroom, storage or sleeping loft option, king size loft bedroom option.

Sleeps 1 - 6

Bathroom

Full size shower, tiled bathroom floor, ceramic basin, towel rail & toilet roll holder

Kitchen

Compact kitchen with overhead cupboards 2 burner cooktop, storage.

Construction

Lightweight Trucore steel frame, sustainable, recycled insulation, underfloor insulation exterior cladding options, colorbond roofing, aluminium windows, sliding door.

Living

Open plan living with room for a sofa and desk.

Utilities

240 volt wired, LED downlights (4), wall mounted lights (2), outdoor light, continuous hot water, smoke detector, pendant light, reverse cycle air conditioning.