



US011720971B1

(12) **United States Patent**  
**Marlow et al.**

(10) **Patent No.:** **US 11,720,971 B1**  
(45) **Date of Patent:** **\*Aug. 8, 2023**

(54) **MACHINE LEARNING BASED ACCIDENT ASSESSMENT**

5,742,699 A 4/1998 Adkins et al.  
5,950,169 A 9/1999 Borghesi et al.  
6,027,415 A 2/2000 Takeda

(71) Applicant: **Allstate Insurance Company**,  
Northbrook, IL (US)

(Continued)

(72) Inventors: **Clint J. Marlow**, Barrington Hills, IL  
(US); **John P. Kelsh**, Antioch, IL (US)

FOREIGN PATENT DOCUMENTS

AU 2002301438 B2 9/2006  
AU 2007200869 A1 3/2007

(73) Assignee: **Allstate Insurance Company**,  
Northbrook, IL (US)

(Continued)

(\* ) Notice: Subject to any disclaimer, the term of this  
patent is extended or adjusted under 35  
U.S.C. 154(b) by 0 days.

ProQuest, "Search Strategy from Dialog," 4 pages (2021).

This patent is subject to a terminal dis-  
claimer.

(Continued)

OTHER PUBLICATIONS

*Primary Examiner* — Paul S Schwarzenberg

(21) Appl. No.: **17/166,335**

(74) *Attorney, Agent, or Firm* — Foley & Lardner LLP

(22) Filed: **Feb. 3, 2021**

(57) **ABSTRACT**

**Related U.S. Application Data**

(63) Continuation of application No. 15/493,685, filed on  
Apr. 21, 2017, now Pat. No. 10,937,103.

Aspects of the disclosure relate to using machine learning algorithms to analyze vehicle operational data associated with a vehicle accident. In some instances, an accident assessment server may receive data indicating that a vehicle was involved in an accident. The accident assessment server may compare the data with other known data, based on machine learning algorithms, to identify whether the accident resulted in a total loss. Responsive to determining that the accident resulted in the total loss, the accident assessment server may request further information regarding the vehicle and may identify a baseline value range for the vehicle. The accident assessment server may request updated information from the owner of the vehicle, identify, based on the updated information, a final value of the vehicle, and may pay the owner of the vehicle an amount corresponding to the final value if the final value is within the baseline value range.

(51) **Int. Cl.**  
**G06Q 40/08** (2012.01)  
**G06N 20/00** (2019.01)

(52) **U.S. Cl.**  
CPC ..... **G06Q 40/08** (2013.01); **G06N 20/00**  
(2019.01)

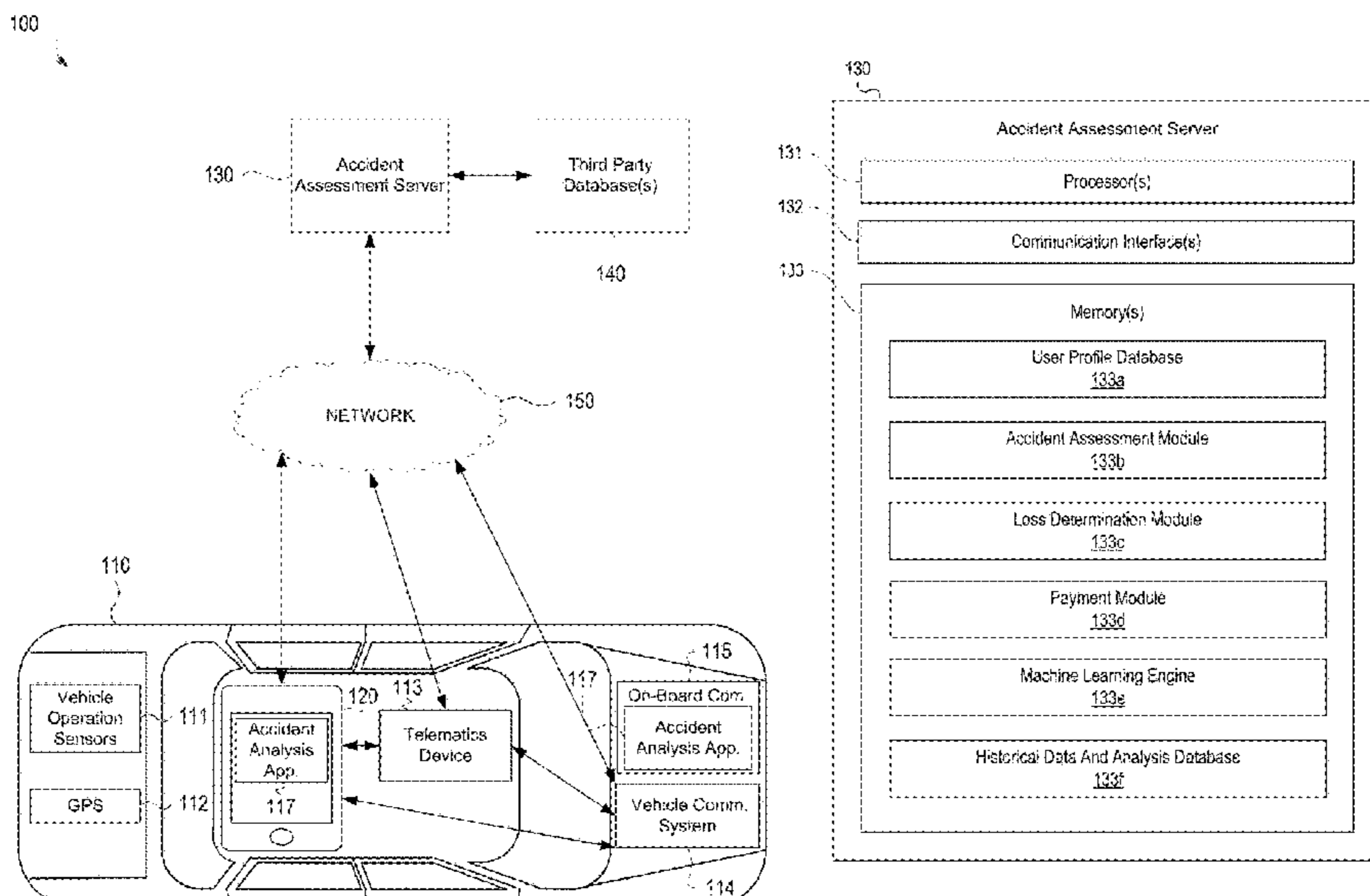
(58) **Field of Classification Search**  
None  
See application file for complete search history.

(56) **References Cited**

U.S. PATENT DOCUMENTS

4,638,289 A 1/1987 Zottnik  
5,450,329 A 9/1995 Tanner

**20 Claims, 10 Drawing Sheets**



(56)

References Cited

U.S. PATENT DOCUMENTS

6,060,989 A	5/2000	Gehlot	8,417,604 B2	4/2013	Orr et al.
6,061,610 A	5/2000	Boer	8,423,239 B2	4/2013	Blumer et al.
6,076,028 A	6/2000	Donnelly et al.	8,432,262 B2	4/2013	Talty et al.
6,141,611 A	10/2000	Mackey et al.	8,433,590 B2	4/2013	Prescott
6,211,777 B1	4/2001	Greenwood et al.	8,438,049 B2	5/2013	Ranicar, III et al.
6,246,933 B1	6/2001	Bague	8,442,508 B2	5/2013	Harter et al.
6,262,657 B1	7/2001	Okuda et al.	8,447,459 B2	5/2013	Lowrey et al.
6,295,492 B1	9/2001	Lang et al.	8,452,486 B2	5/2013	Banet et al.
6,330,499 B1	12/2001	Chou et al.	8,463,488 B1	6/2013	Hart
6,472,982 B2	10/2002	Eida et al.	8,466,781 B2	6/2013	Miller et al.
6,509,868 B2	1/2003	Flick	8,478,514 B2	7/2013	Kargupta
6,594,579 B1	7/2003	Lowrey et al.	8,484,113 B2	7/2013	Collopy et al.
6,611,740 B2	8/2003	Lowrey et al.	8,494,938 B1	7/2013	Kazenas
6,641,038 B2	11/2003	Gehlot et al.	8,510,133 B2	8/2013	Peak et al.
6,701,234 B1	3/2004	Vogelsang	8,510,200 B2	8/2013	Pearlman et al.
6,732,020 B2	5/2004	Yamagishi	8,527,135 B2	9/2013	Lowrey et al.
6,732,031 B1	5/2004	Lightner et al.	8,547,435 B2	10/2013	Mimar
6,741,168 B2	5/2004	Webb et al.	8,554,584 B2	10/2013	Hargroder
6,762,020 B1	7/2004	Mack et al.	8,571,895 B1	10/2013	Medina, III et al.
6,765,499 B2	7/2004	Flick	8,577,703 B2	11/2013	McClellan et al.
6,798,356 B2	9/2004	Flick	8,595,034 B2	11/2013	Bauer et al.
6,909,947 B2	6/2005	Douros et al.	8,598,977 B2	12/2013	Maalouf et al.
6,925,425 B2	8/2005	Remboski et al.	8,620,692 B2	12/2013	Collopy et al.
6,946,966 B2	9/2005	Koenig	8,630,768 B2	1/2014	McClellan et al.
6,980,313 B2	12/2005	Sharif et al.	8,633,985 B2	1/2014	Haynes et al.
6,982,654 B2	1/2006	Rau et al.	8,635,091 B2	1/2014	Amigo et al.
6,988,033 B1	1/2006	Lowrey et al.	8,645,014 B1	2/2014	Kozlowski et al.
7,069,118 B2	6/2006	Coletrane et al.	8,712,893 B1	4/2014	Brandmaier et al.
7,082,359 B2	7/2006	Breed	8,788,297 B2	7/2014	Thomas et al.
7,092,803 B2	8/2006	Kapolka et al.	8,788,301 B1	7/2014	Marlow et al.
7,113,127 B1	9/2006	Banet et al.	8,788,406 B2	7/2014	Roll et al.
7,119,669 B2	10/2006	Lundsgaard et al.	8,799,034 B1	8/2014	Brandmaier et al.
7,129,826 B2	10/2006	Nitz et al.	8,903,852 B1	12/2014	Pedregal et al.
7,133,611 B2	11/2006	Kaneko	8,935,036 B1	1/2015	Christensen et al.
7,143,290 B1	11/2006	Ginter et al.	9,311,677 B2	4/2016	Thomas et al.
7,155,259 B2	12/2006	Bauchot et al.	9,325,807 B1	4/2016	Meoli et al.
7,155,321 B2	12/2006	Bromley et al.	10,032,226 B1	7/2018	Suizzo et al.
7,174,243 B1	2/2007	Lightner et al.	10,102,587 B1 *	10/2018	Potter ..... B60R 25/04
7,271,716 B2	9/2007	Nou	2002/0055861 A1	5/2002	King et al.
7,305,293 B2	12/2007	Flick	2002/0063637 A1	5/2002	Eida et al.
7,348,895 B2	3/2008	Lagassey	2002/0111725 A1	8/2002	Burge
7,477,968 B1	1/2009	Lowrey et al.	2002/0135679 A1	9/2002	Scaman
7,565,230 B2	7/2009	Gardner et al.	2003/0154111 A1	8/2003	Dutra et al.
7,671,727 B2	3/2010	Flick	2003/0212567 A1	11/2003	Shintani et al.
7,702,529 B2	4/2010	Wahlbin et al.	2003/0233261 A1	12/2003	Kawahara et al.
7,715,961 B1	5/2010	Kargupta	2004/0083123 A1	4/2004	Kim et al.
7,747,365 B1	6/2010	Lowrey et al.	2004/0088090 A1	5/2004	Wee
7,792,690 B2	9/2010	Wahlbin et al.	2004/0186744 A1	9/2004	Lux
7,809,586 B2	10/2010	Wahlbin et al.	2004/0189493 A1	9/2004	Estus et al.
7,885,829 B2	2/2011	Danico et al.	2004/0205622 A1	10/2004	Jones et al.
7,890,355 B2	2/2011	Gay et al.	2005/0021374 A1	1/2005	Allahyari
7,970,834 B2	6/2011	Daniels et al.	2005/0161505 A1	7/2005	Yin et al.
8,000,979 B2	8/2011	Blom	2005/0216487 A1	9/2005	Fisher et al.
8,014,789 B2	9/2011	Breed	2005/0267774 A1 *	12/2005	Merritt ..... G06Q 10/0637 705/306
8,019,629 B1	9/2011	Medina, III et al.	2005/0278082 A1	12/2005	Weekes
8,041,635 B1	10/2011	Garcia et al.	2006/0224305 A1	10/2006	Ansari et al.
8,069,060 B2	11/2011	Tipirneni	2006/0226960 A1	10/2006	Pisz et al.
8,090,598 B2	1/2012	Bauer et al.	2007/0009136 A1	1/2007	Pawlenko et al.
8,140,358 B1	3/2012	Ling et al.	2007/0043594 A1	2/2007	Lavergne
8,214,100 B2	7/2012	Lowrey et al.	2007/0136162 A1	6/2007	Thibodeau et al.
8,229,759 B2	7/2012	Zhu et al.	2007/0162308 A1	7/2007	Peters
8,239,220 B2	8/2012	Kidd et al.	2007/0288268 A1	12/2007	Weeks
8,255,243 B2	8/2012	Raines et al.	2008/0027761 A1	1/2008	Bracha
8,255,275 B2	8/2012	Collopy et al.	2008/0242261 A1	10/2008	Shimanuki et al.
8,260,639 B1	9/2012	Medina, III et al.	2008/0294690 A1	11/2008	McClellan et al.
8,271,187 B2	9/2012	Taylor et al.	2009/0106052 A1	4/2009	Moldovan
8,285,588 B2	10/2012	Postrel	2009/0156243 A1	6/2009	Lichtenfeld et al.
8,311,858 B2	11/2012	Everett et al.	2009/0164504 A1	6/2009	Flake et al.
8,321,086 B2	11/2012	Park et al.	2009/0198772 A1	8/2009	Kim et al.
8,330,593 B2	12/2012	Golenski	2009/0254241 A1	10/2009	Basir
8,364,505 B1	1/2013	Kane et al.	2009/0265193 A1	10/2009	Collins et al.
8,370,254 B1	2/2013	Hopkins, III et al.	2009/0265385 A1	10/2009	Beland et al.
8,392,280 B1	3/2013	Kilshaw	2010/0030540 A1	2/2010	Choi et al.
8,401,877 B2	3/2013	Salvagio	2010/0030586 A1	2/2010	Taylor et al.
8,403,225 B2	3/2013	Sharra et al.	2010/0131300 A1	5/2010	Collopy et al.
			2010/0138242 A1	6/2010	Ferrick et al.
			2010/0161491 A1	6/2010	Bauchot et al.
			2010/0174564 A1	7/2010	Stender et al.

(56)

References Cited

U.S. PATENT DOCUMENTS

2011/0015946 A1 1/2011 Buckowsky et al.  
 2011/0070834 A1 3/2011 Griffin et al.  
 2011/0077028 A1 3/2011 Wilkes, III et al.  
 2011/0112870 A1 5/2011 Berg et al.  
 2011/0153369 A1 6/2011 Feldman et al.  
 2011/0161116 A1 6/2011 Peak et al.  
 2011/0161118 A1 6/2011 Borden et al.  
 2011/0185178 A1 7/2011 Gotthardt  
 2011/0213628 A1 9/2011 Peak et al.  
 2011/0281564 A1 11/2011 Armitage et al.  
 2011/0307188 A1 12/2011 Peng et al.  
 2011/0313936 A1 12/2011 Sieger  
 2012/0028680 A1 2/2012 Breed  
 2012/0047203 A1 2/2012 Brown et al.  
 2012/0072243 A1 3/2012 Collins et al.  
 2012/0076437 A1 3/2012 King  
 2012/0084179 A1 4/2012 McRae et al.  
 2012/0109690 A1 5/2012 Weinrauch et al.  
 2012/0109692 A1 5/2012 Collins et al.  
 2012/0119936 A1 5/2012 Miller et al.  
 2012/0136802 A1 5/2012 McQuade et al.  
 2012/0150412 A1 6/2012 Yoon et al.  
 2012/0191476 A1 7/2012 Reid et al.  
 2012/0197486 A1 8/2012 Elliott  
 2012/0197669 A1 8/2012 Kote et al.  
 2012/0209631 A1 8/2012 Roscoe et al.  
 2012/0209632 A1 8/2012 Kaminski et al.  
 2012/0230548 A1 9/2012 Calman et al.  
 2012/0232995 A1 9/2012 Castro et al.  
 2012/0239417 A1 9/2012 Pourfallah et al.  
 2012/0242503 A1 9/2012 Thomas et al.  
 2012/0250938 A1 10/2012 DeHart  
 2012/0259665 A1 10/2012 Pandhi et al.  
 2012/0290150 A1 11/2012 Doughty et al.  
 2012/0303392 A1 11/2012 Depura et al.  
 2012/0316893 A1 12/2012 Egawa  
 2012/0330687 A1 12/2012 Hilario et al.  
 2013/0006674 A1 1/2013 Bowne et al.  
 2013/0006675 A1 1/2013 Bowne et al.  
 2013/0018676 A1 1/2013 Fischer et al.  
 2013/0030642 A1 1/2013 Bradley et al.  
 2013/0033386 A1 2/2013 Zlojutro  
 2013/0035964 A1 2/2013 Roscoe et al.  
 2013/0046510 A1 2/2013 Bowne et al.  
 2013/0054274 A1 2/2013 Katyal  
 2013/0073318 A1 3/2013 Feldman et al.  
 2013/0073321 A1 3/2013 Hofmann et al.  
 2013/0138267 A1 5/2013 Hignite et al.  
 2013/0151288 A1 6/2013 Bowne et al.  
 2013/0166098 A1 6/2013 Lavie et al.  
 2013/0166326 A1 6/2013 Lavie et al.  
 2013/0179027 A1 7/2013 Mitchell  
 2013/0179198 A1 7/2013 Bowne et al.  
 2013/0190967 A1 7/2013 Hassib et al.  
 2013/0197945 A1 8/2013 Anderson  
 2013/0204645 A1 8/2013 Lehman et al.  
 2013/0211660 A1 8/2013 Mitchell  
 2013/0226397 A1 8/2013 Kuphal et al.  
 2013/0289819 A1 10/2013 Hassib et al.  
 2013/0290036 A1 10/2013 Strange  
 2013/0297353 A1 11/2013 Strange et al.  
 2013/0297418 A1 11/2013 Collopy et al.  
 2013/0300552 A1 11/2013 Chang  
 2013/0304517 A1 11/2013 Florence  
 2013/0311209 A1 11/2013 Kaminski et al.  
 2013/0316310 A1 11/2013 Musicant et al.  
 2013/0317860 A1 11/2013 Schumann, Jr.  
 2013/0339062 A1 12/2013 Brewer et al.  
 2014/0025404 A1 1/2014 Jackson et al.  
 2014/0039934 A1 2/2014 Rivera  
 2014/0039935 A1 2/2014 Rivera  
 2014/0058956 A1\* 2/2014 Raines ..... G06Q 30/0201  
 705/306  
 2014/0081673 A1 3/2014 Batchelor

2014/0081675 A1\* 3/2014 Ives ..... G06Q 40/08  
 705/4  
 2014/0081876 A1 3/2014 Schulz  
 2014/0100889 A1 4/2014 Tofte  
 2014/0111542 A1 4/2014 Wan  
 2014/0197939 A1 7/2014 Stefan et al.  
 2014/0200924 A1 7/2014 Gilbert et al.  
 2014/0200929 A1 7/2014 Fitzgerald et al.  
 2014/0244312 A1 8/2014 Gray et al.  
 2015/0045983 A1\* 2/2015 Fraser ..... G07C 5/008  
 701/1  
 2015/0058045 A1 2/2015 Santora  
 2015/0127570 A1 5/2015 Doughty et al.  
 2015/0170287 A1 6/2015 Tirone et al.  
 2015/0213556 A1 7/2015 Haller, Jr.  
 2017/0293894 A1\* 10/2017 Taliwal ..... G06T 7/0004  
 2018/0108189 A1\* 4/2018 Park ..... G07C 5/008

FOREIGN PATENT DOCUMENTS

CA 2658219 A1 1/2008  
 DE 102010001006 A1 7/2011  
 EP 1826734 A1 8/2007  
 EP 1965361 A2 9/2008  
 EP 2481037 A1 8/2012  
 GB 2486384 A 6/2012  
 GB 2488956 A 9/2012  
 KR 20020067246 A 8/2002  
 WO 2002079934 A2 10/2002  
 WO 2012045128 A1 4/2012  
 WO 2012067640 A1 5/2012  
 WO 2012097441 A1 7/2012  
 WO 2012106878 A1 8/2012  
 WO 2012173655 A1 12/2012  
 WO 2012174590 A1 12/2012  
 WO 2013072867 A1 5/2013

OTHER PUBLICATIONS

“Car Total Loss Evaluation and Negotiation,” Quiroga Law Office, PLLC, retrieved Mar. 10, 2017 from <http://www.auto-insurance-claim-advice.com/car-total-loss-2.html>, 3 pages.  
 “Understanding Total Loss Claims,” The Travelers Indemnity Company, retrieved Mar. 10, 2017 from <https://www.travelers.com/claims/total-loss-claims.aspx>, 1 page.  
 Jul. 29, 2019—U.S. Non-Final Office Action—U.S. Appl. No. 15/493,685.  
 Feb. 5, 2020—U.S. Final Office Action—U.S. Appl. No. 15/493,685.  
 “Pre-contract information related to comprehensive motor vehicle insurance for vehicles registered under PIPMV-V-Jan. 2014.” Ceska Pojistovna. Jan. 2014. pp. 1-30.  
 “What is insurance telematics?” VEMOCO. Retrieved from [<http://vemoco.com/insurance>] on Jun. 25, 2014. pp. 1-5.  
 “Telematics: How Big Data Is Transforming the Auto Insurance Industry.” SAS White Paper. Copyright 2013. pp. 1-12.  
 “Insurance telematics: What is it? And why we should care.” Verisk Analytics. Hakim et al. 2013. Retrieved from [<http://www.verisk.com/visualize/insurance-telematics-what-is-it-and-why-we-should-care.html>] on Jun. 25, 2014. pp. 1-4.  
 “Telematics data sharing, competition law and privacy rights.” Out-Law. Jan. 8, 2014. Retrieved from [<http://www.put-law.com/articles/2014/january/telematics-data-sharing-competition-law-and-privacy-rights/>] on Jun. 25, 2014. pp. 1-5.  
 “BoxyMo.ie—Rewarding Better Driving.” Black Box Car Insurance. Retrieved from [<http://www.boxymo.ie/telematics.aspx>] on Jun. 25, 2014. pp. 1-3.  
 “Using Mobile Solutions to Improve Insurance.” Frost & Sullivan. Copyright 2011. pp. 1-16.  
 “Telematics FAQs | Girls Drive Better.” Girls Drive Better. Retrieved from [<http://www.girlsdrivebetter.com/telematics-faqs/#.U6qqBpSSxDR>] on Jun. 25, 2014. pp. 1-6.  
 “Telematics (also known as black box) insurance.” Drive Smart Insurance. Retrieved from [<http://drivesmartinsurance.co.uk/telematics/>] on Jun. 25, 2014. pp. 1-2.

(56)

## References Cited

## OTHER PUBLICATIONS

Sep. 21, 2017—U.S. Non-Final Office Action—U.S. Appl. No. 14/602,969.

Apr. 26, 2018 U.S. Final Office Action—U.S. Appl. No. 14/602,969.

Nov. 26, 2018—U.S. Non-Final Office Action—U.S. Appl. No. 14/602,969.

Jun. 14, 2019 U.S. Final Office Action—U.S. Appl. No. 14/602,969.

Jan. 9, 2020—U.S. Notice of Allowance—U.S. Appl. No. 14/602,969.

NPL Search History, “EIC 3600 Search Report”, Scientific & Technical Information Center, Access Search Log No. 605818, pp. 1 through 8, Nov. 8, 2019.

Maciag, A. K. (1980). Motor accident insurance and systems of compensation. (Order No. MK49023, University of Alberta (Canada)). ProQuest Dissertations and Theses, 1. Retrieved from <http://search.proquest.com/docview/303097892?accountid=14753>.

Spevacek, C. E., Ledwith, J. F., Newman, T. R., & Lennes, John B., Jr. (2001). Additional insured and indemnification issues affecting the insurance industry, coverage counsel, and defense counsel—legal advice and practice pointers. *FDCC Quarterly*, 52(1), 3-101. Retrieved from <http://search.proquest.com/docview/201215466?accountid=14753>.

“Using Smartphones to Detect Car Accidents and Provide Situational Awareness to Emergency Responders.” *Mobile Wireless Middleware, Operating Systems, and Applications*, pp. 29-42. Jul. 2010.

“Mercedes-Benz mbrace.” Oct. 22, 2010.

“Design and Development of a GSM Based Vehicle Theft Control System and Accident Detection by Wireless Sensor Network.” *International Journal of Emerging Trends in Engineering and Development*, Issue 2, vol. 5, pp. 529-540. Jul. 2012.

“The Potential for Automatic Crash Notification Systems to Reduce Road Fatalities.” *Annals of Advances in Automotive Medicine*, vol. 52, pp. 85-92. 2008. (retrieved from <http://www.ncbi.nlm.nih.gov/pmc/articles/PMC3256762/> on Jan. 12, 2013).

“Automatic Crash Response, Car Safety, Emergency Services—OnStar” retrieved from <https://www.onstar.com/web/portal/emergencyexplore?tab=g=1> on Jan. 12, 2013.

“A study of US crash statistics from automated crash notification data.” 20th International Technical Conference on the Enhanced Safety of Vehicles Conference (ESV). Lyon, France, pp. 18-21. 2007.

“Insurance Tech Trends 2013.” Deloitte, 2013.

“Trends 2013—North American Insurance eBusiness and Channel Strategy.” Forrester. May 16, 2013.

“Top 10 Technology Trends Impacting Life and PC Insurers in 2013.” Gartner. Mar. 27, 2013.

“This App Turns Smartphones Into Safe Driving Tools.” Mashable. Aug. 30, 2012. Retrieved from <http://mashable.com/2012/08/30/drivescribe-app-safe-driving> on Nov. 12, 2013.

Bruce Donnelly “The Automated Collision Notification System.” NHTSA. Retrieved from [http://www.nhtsa.gov/DOT/NHTSA/NRD/Articles/EDR/PDF/Research/Automated\\_Collision\\_Notification\\_System.pdf](http://www.nhtsa.gov/DOT/NHTSA/NRD/Articles/EDR/PDF/Research/Automated_Collision_Notification_System.pdf) on Nov. 12, 2013.

“ACN Field Operational Test—Final Report.” NHTSA. Oct. 31, 2000.

“ACN Field Operational Test—Evaluation Report.” NHTSA. Feb. 2001.

“Automatic Crash Notification.” ComCARE Alliance. Retrieved from [http://www.nhtsa.gov/DOT/NHTSA/NRD/Articles/EDR/PDF/Research/ComCARE\\_ACN\\_System.pdf](http://www.nhtsa.gov/DOT/NHTSA/NRD/Articles/EDR/PDF/Research/ComCARE_ACN_System.pdf) on Nov. 12, 2013. pp. 1-2.

“GEICO App—Android Apps on Google Play.” Retrieved from <https://play.google.com/store/apps/details?id=com.geico.mobile&hl=en> on Nov. 12, 2013.

“Privacy Policy.” Lemon Wallet. Retrieved from <http://lemon.com/privacy>; on May 20, 2013.

“Design and implementation of a smart card based healthcare information system.” *Computer Methods and Programs in Biomedicine* 81. pp. 66-78. Sep. 27, 2003.

“Information-Sharing in Out-of-Hospital Disaster Response: The Future Role of Information Technology.” *Abstracts of Prehospital*

and Disaster Medicine. Retrieved from <http://journals.cambridge.org/action/displayAbstract?fromPage=online&aid=8231246>; on May 20, 2013.

“For insurance companies, the day of digital reckoning.” Bain & Company. 2013.

“New Idea: QR Codes for License Plates.” Feb. 11, 2011. Retrieved from <http://www.andrewcmaxwell.com/2011/02/new-idea-qr-codes-for-license-plates> on May 21, 2013.

“QR Code.” IDL Services. Retrieved from <http://www.internationaler-fuehrerschein.com/en/the-idd/qr-code-quick-response-code-feature-in-the-idd.html> on May 21, 2013.

“Vehicle Wrap Trends: What are QR Codes and why do I need one?” The Brandtastic Branding & Marketing Education Blog. Retrieved from <http://www.sunrisesigns.com/our-blog/bid/34661/Vehicle-Wrap-Trends-What-are-QR-Codes-and-why-do-I-need-one> on May 21, 2013.

“Near Field Communication: A Simple Exchange of Information.” Samsung. Mar. 5, 2013. Retrieved from <http://www.samsung.com/us/article/near-field-communication-a-simple-exchange-of-information> on May 21, 2013.

“Microsoft Tag Implementation Guide.” Aug. 2010.

“New Technology Security Risks : QR codes and Near Field Communication.” Retrieved from <http://www.qwiktag.com/index.php/knowledge-base/150-technology-security-risks-qr-codes> on Nov. 13, 2013.

“Encrypted QR Codes.” qrworld. Nov. 11, 2011. Retrieved from <http://qrworld.wordpress.com/2011/11/27/encrypted-qr-codes> on Nov. 12, 2013.

“Fraunhofer offers secure NFC keys that can be shared via QR codes.” NFC World. Mar. 20, 2013. Retrieved from <http://www.nfcworld.com/2013/03/20/323184/fraunhofer-offers-secure-nfc-keys-that-can-be-shared-via-qr-codes> on Nov. 13, 2013.

“Automatic License Plate Recognition (ALPR) Scanning Systems.” Retrieved from <http://www.experiencedcriminallawyers.com/articles/automatic-license-plate-recognition-alpr-scanning-systems> on Jun. 28, 2013.

“License plate readers allow police to quickly scan, check for offenders.” Mar. 17, 2013. Retrieved from <http://cjonline.com/news/2013-03-17/license-plate-readers-allow-police-quickly-scan-check-offenders> on Jun. 28, 2013.

Notice of Allowance for U.S. Appl. No. 17/227,542 dated Jan. 31, 2022, 11 pages.

ProQuest, “Search Strategy from Dialog—Jan. 1, 2022 20:29,” Scientific and Technical Information Center, 4 pages (2022).

Angellist, “Genie Cam by Selka Inc.,” retrieved from <https://angel.co/company/geniecam>, 6 pages (2012).

Boyle, “Scan Someone’s License Plate and Message Them Instantly with New Bump App,” *Popular Science*, retrieved from <https://www.popsci.com/cars/article/2010-09/social-networking-site-uses-license-plates-connect-drivers/>, 4 pages (2010).

Final Office Action on U.S. Appl. No. 14/602,969 dated Apr. 26, 2018, 29 pages.

Final Office Action on U.S. Appl. No. 14/602,969 dated Jun. 14, 2019, 10 pages.

Final Office Action on U.S. Appl. No. 15/493,685 dated Feb. 5, 2020, 47 pages.

Freeman, “How OnStar Works,” retrieved from <https://auto.howstuffworks.com/onstar.htm>, 15 pages (2006).

Harding, “The ‘Alva Cape’ and the Automatic Identification System: The Use of VHF in Collision Avoidance at Sea,” *The Journal of Navigation* 55(3), pp. 431-442 (2002).

Jeevagan, et al., “RFID based vehicle identification during collisions,” *IEEE 2014 Global Humanitarian Technology Conference*, 5 pages (2014).

Mercedes-Benz, “mbrace: Safety & Security Services,” retrieved from [https://www.mbusa.com/vcm/MB/DigitalAssets/pdfmb/mbrace\\_Cut\\_Sheet\\_All\\_4\\_12\\_12\\_.pdf](https://www.mbusa.com/vcm/MB/DigitalAssets/pdfmb/mbrace_Cut_Sheet_All_4_12_12_.pdf), 37 pages (2012).

Notice of Allowance on U.S. Appl. No. 14/602,969 dated May 14, 2020, 10 pages.

Notice of Allowance on U.S. Appl. No. 15/493,685 dated Oct. 15, 2020, 8 pages.

Office Action on U.S. Appl. No. 14/602,969 dated Nov. 26, 2018, 27 pages.

(56)

**References Cited**

OTHER PUBLICATIONS

Office Action on U.S. Appl. No. 14/602,969 dated Sep. 21, 2017, 31 pages.

Office Action on U.S. Appl. No. 15/493,685 dated Jul. 29, 2019, 39 pages.

Office Action on U.S. Appl. No. 17/827,174 dated Oct. 14, 2022, 7 pages.

Proquest, "Search Strategy from Dialog—Oct. 8, 2022 22:2," Scientific and Technical Information Center, 4 pages (2022).

Schmitt, "License Plate Scanner Obsoletes Meter Maid," The Truth About Cars, retrieved from <https://www.thetruthaboutcars.com/2011/02/license-plate-scanner-obsoletes-meter-maid/>, 3 pages (2011).

Smith, "Car Insurance Firms Revving up Mobile App Features," Insurance.com, retrieved from <https://www.insurance.com/auto-insurance/auto-insurance-basics/car-insurance-mobile-apps.htm>, 3 pages (2012).

TMC News, "ATX Launches Enhanced Automatic Collision Notification for BMW," retrieved from <http://www.tmcnet.com/2009/01/11/3905139.htm>, 2 pages (2009).

Wikipedia, "Bump (application)," retrieved from [https://en.wikipedia.org/wiki/Bump\\_\(application\)](https://en.wikipedia.org/wiki/Bump_(application)) on Aug. 29, 2013.

Notice of Allowance on U.S. Appl. No. 17/166,335 dated Feb. 2, 2023, 9 pages.

\* cited by examiner

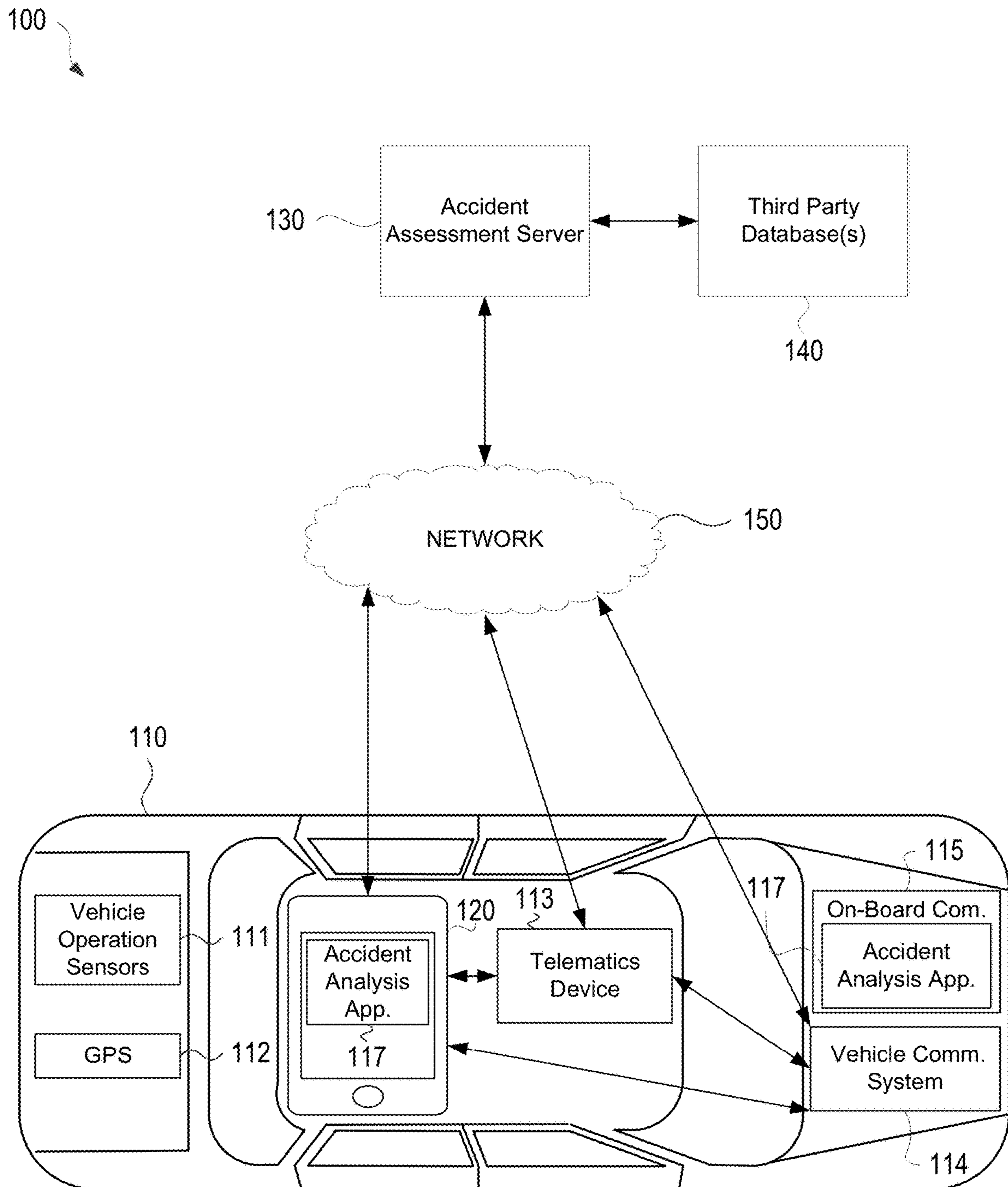
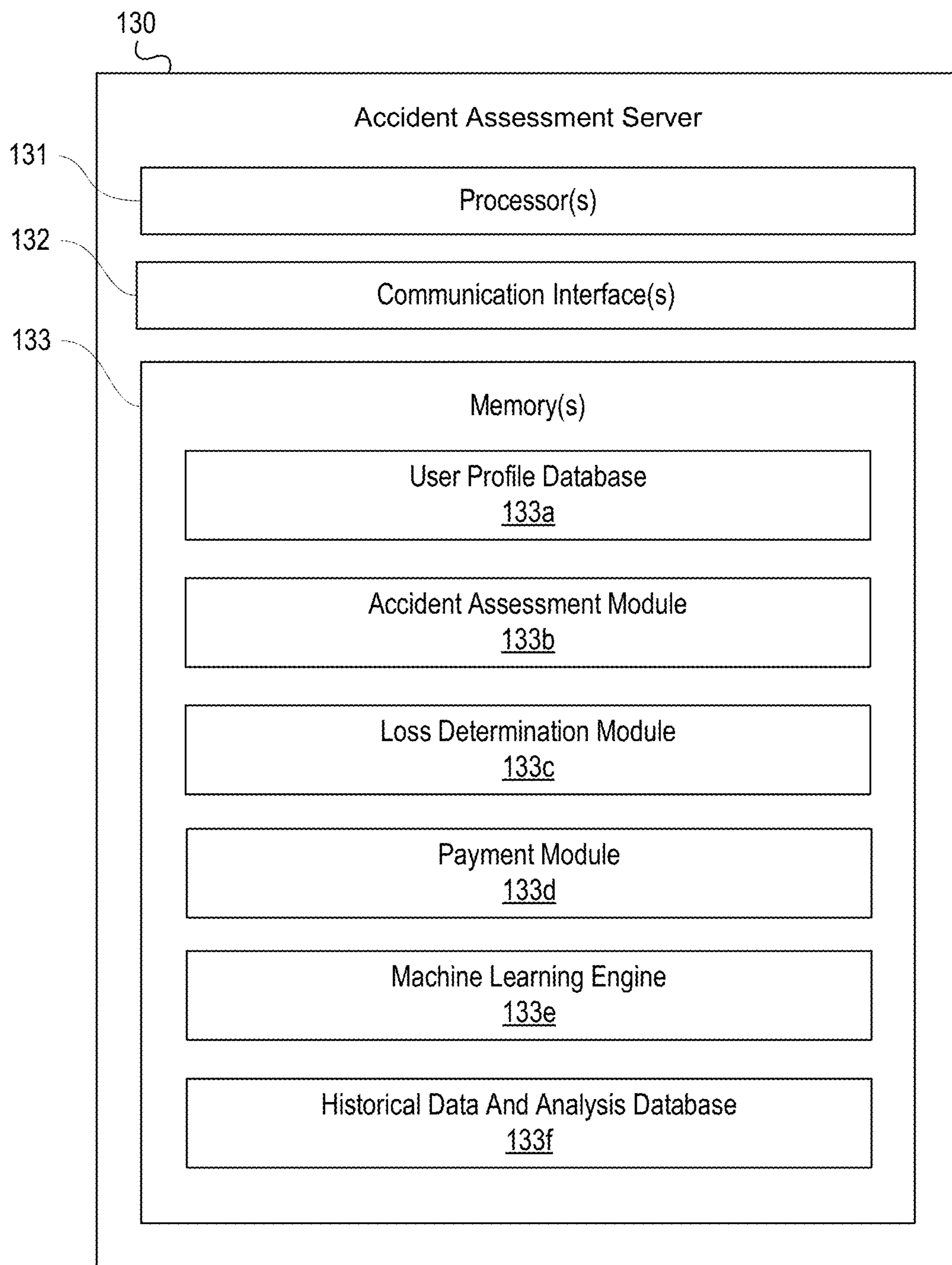


FIG. 1A



**FIG. 1B**

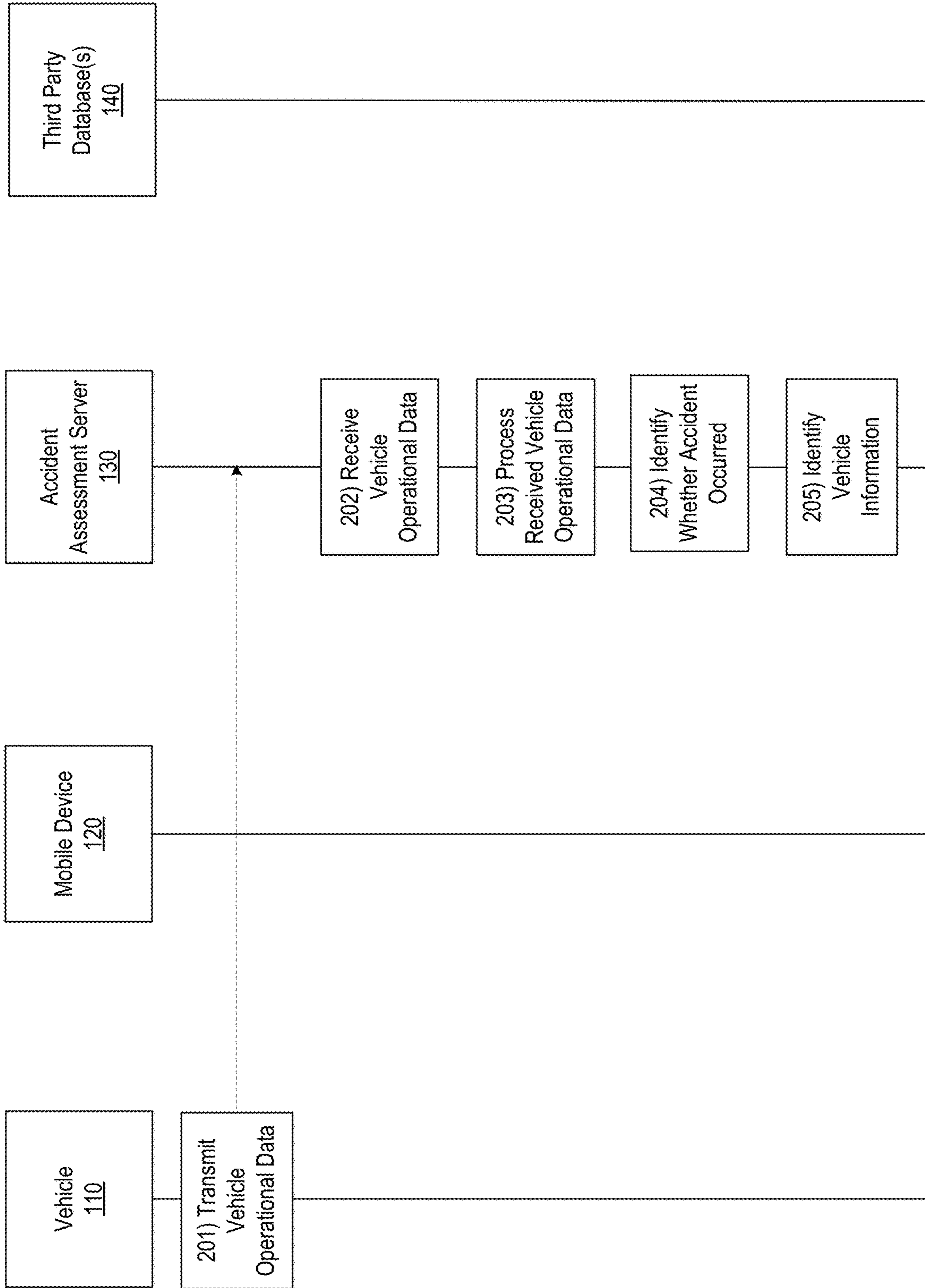


FIG. 2A



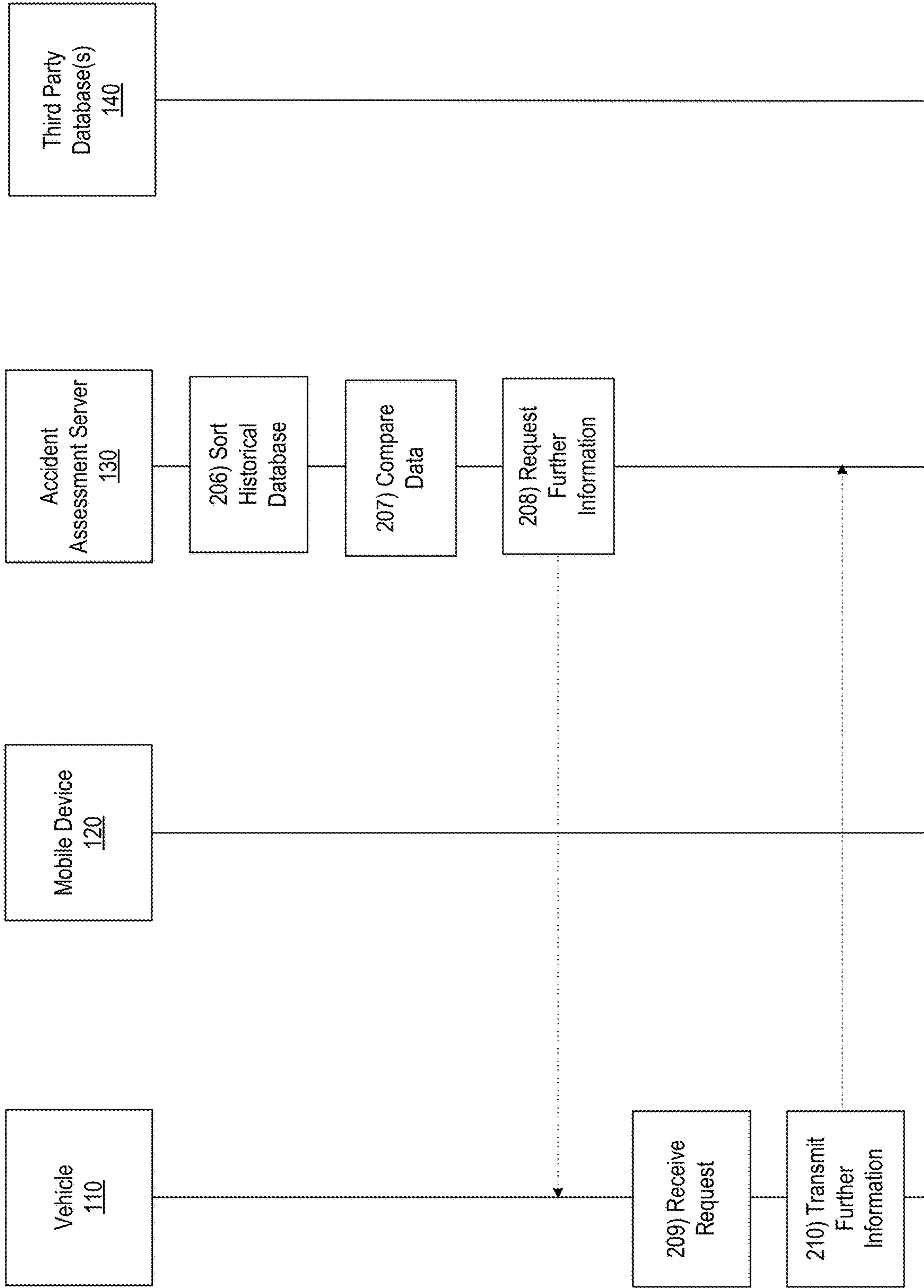


FIG. 2B

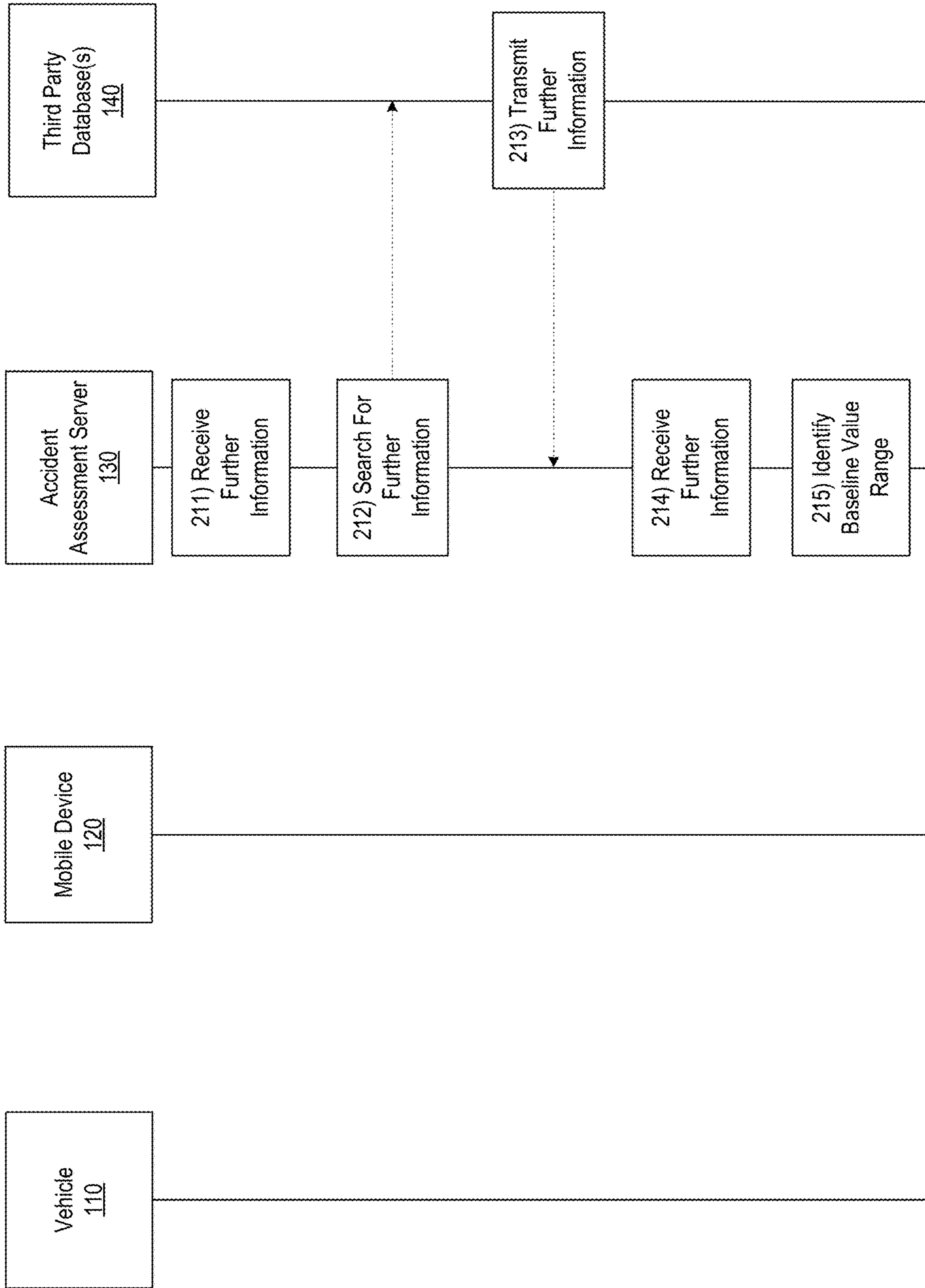


FIG. 2C

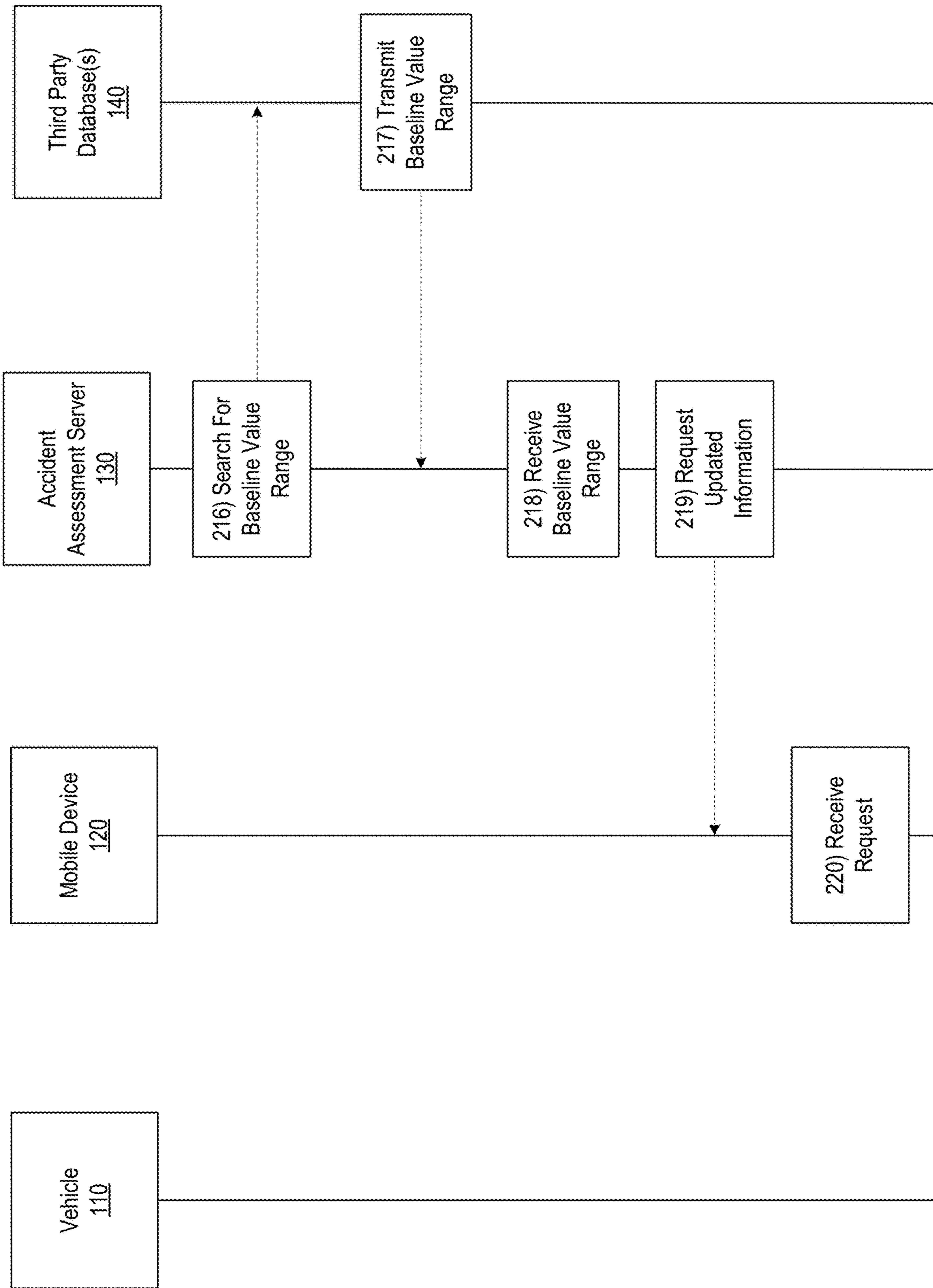


FIG. 2D

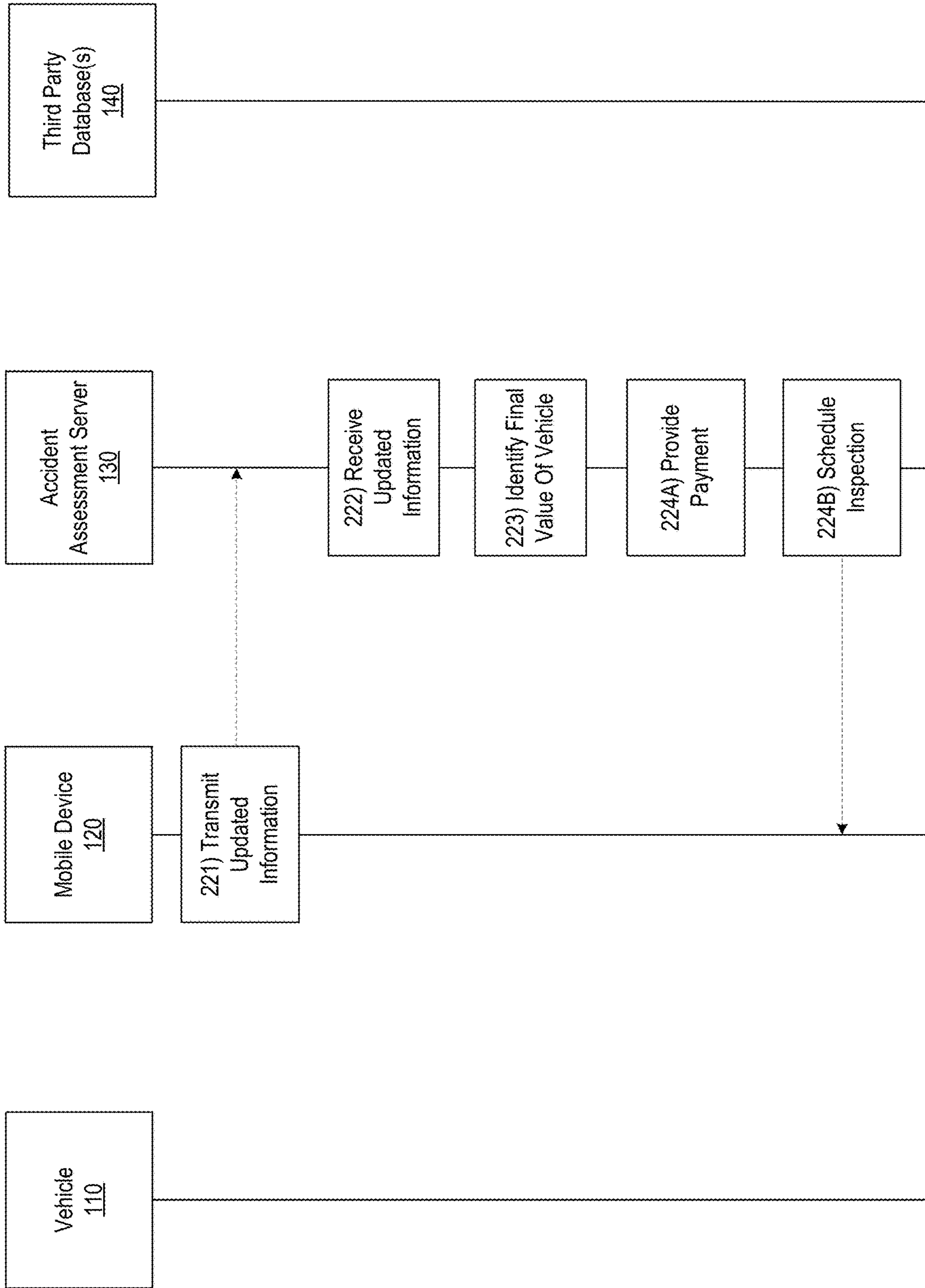


FIG. 2E



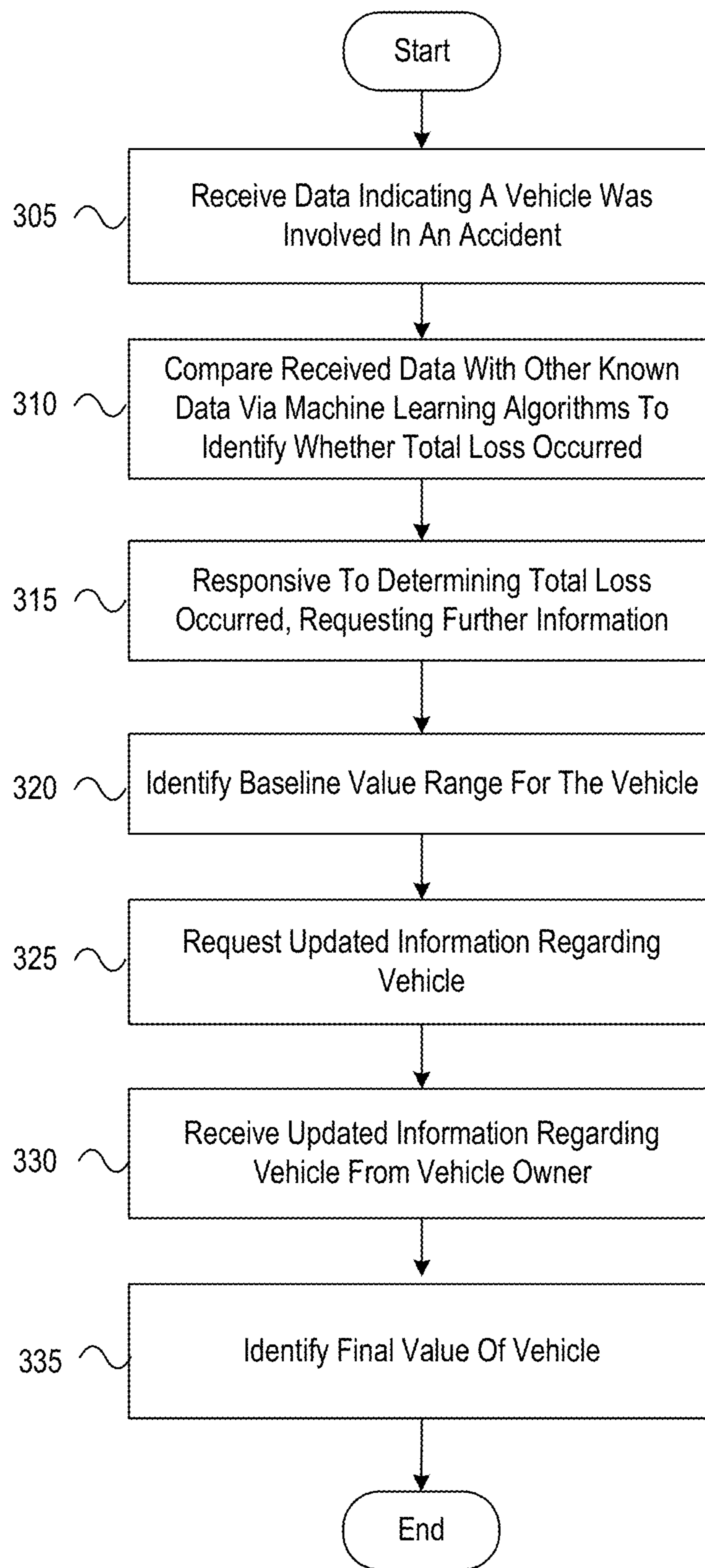
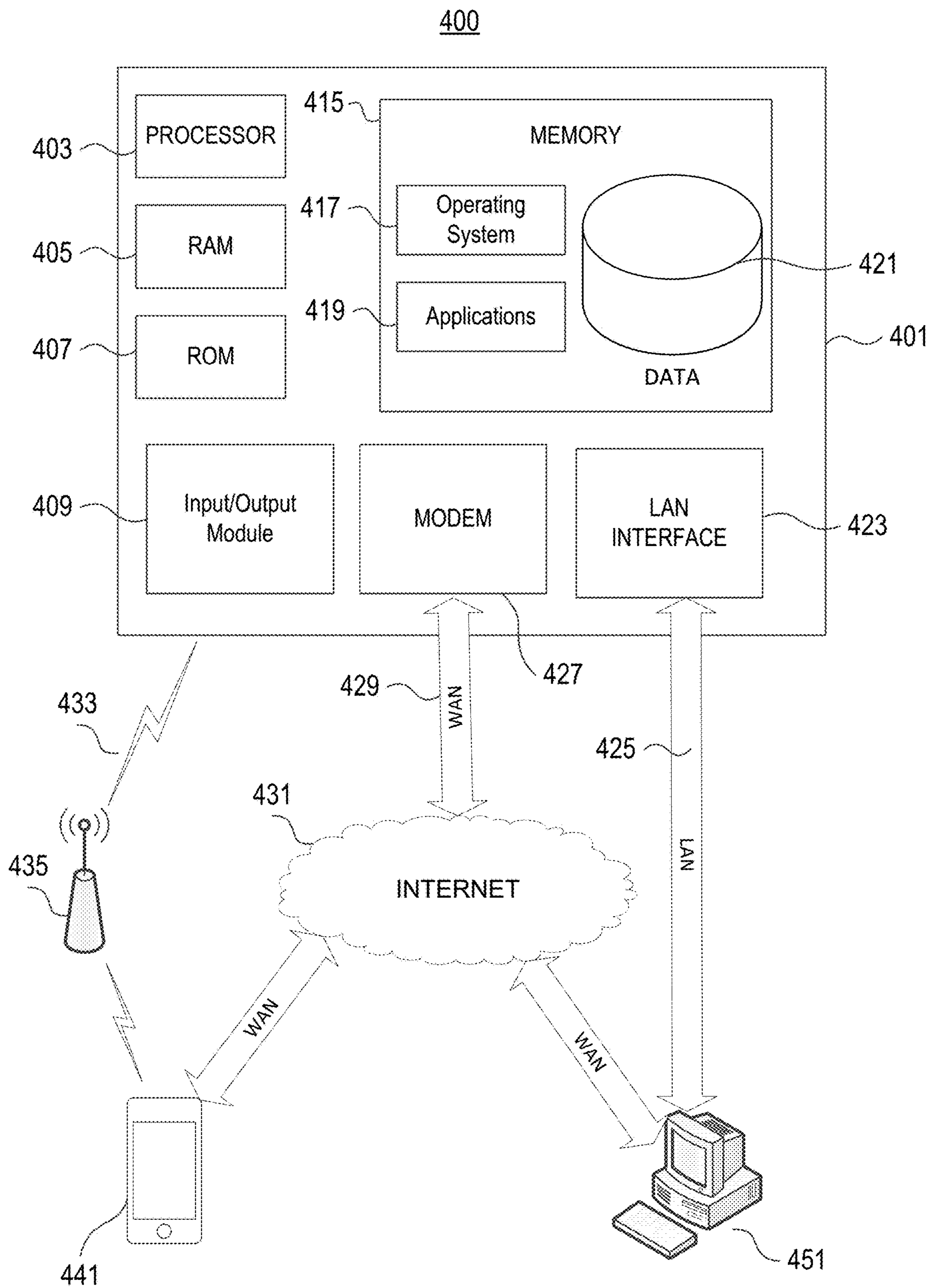


FIG. 3



**FIG. 4**

1

## MACHINE LEARNING BASED ACCIDENT ASSESSMENT

### CROSS-REFERENCE TO RELATED APPLICATIONS

This application is a continuation of and claims priority to U.S. patent application Ser. No. 15/493,685, filed Apr. 21, 2017, and entitled "Machine Learning Based Accident Assessment," the content of which is incorporated herein by reference in its entirety.

### FIELD

Aspects described herein are generally related to systems and devices for accident assessment. More specifically, aspects described herein relate to using machine learning algorithms to assess vehicle operational data.

### BACKGROUND

In some instances, an incident and/or accident may cause damage to a vehicle. The timely determination of the extent of the damages to the vehicle (e.g., whether the accident resulted in a total loss of the vehicle) may be paramount in ensuring the safety of those affected by the incident and/or accident, as well the integrity of the property or vehicle involved. In conventional accident assessment systems, however, an inspection is required to determine the extent of damages to a vehicle after an accident, which is dependent on the availability of the inspector, and can result in owners driving vehicles unfit for operation.

### BRIEF SUMMARY

Aspects of the disclosure address these and/or other technological shortcomings by using machine learning algorithms to assess vehicle operational data associated with a vehicle accident. In particular, one or more aspects of the disclosure provide effective, efficient, scalable, and convenient technical solutions that address and overcome the technical problems associated with accident assessment systems. For example, one or more aspects of the disclosure provide techniques for using machine learning algorithms to identify whether an accident resulted in a total loss.

In accordance with one or more embodiments, an accident assessment server having at least one processor, communication interface and memory, may receive, via the communication interface, from a telematics device associated with a vehicle, data indicating that the vehicle was involved in an accident. The accident assessment server may compare, via machine learning algorithms, the received data with other known data to identify whether the accident resulted in a total loss. Responsive to determining that the accident resulted in the total loss, the accident assessment server may request, by the communication interface, further information regarding the vehicle from the telematics device. The accident assessment server may identify, based on the received data and further data, a baseline value range for the vehicle. The accident assessment server may request, by the communication interface, from a mobile device associated with an owner of the vehicle, updated information regarding the vehicle. The accident assessment server may receive, by the communication interface, updated information from the mobile device of the owner of the vehicle. The accident assessment server may identify, based on the updated information, a final value of the vehicle.

2

In some embodiments, responsive to determining that the final value of the vehicle is within the baseline value range of the vehicle, the accident assessment server may provide payment to the owner corresponding to the final value of the vehicle.

In some embodiments, the updated information includes one or more of exact mileage, presence of aftermarket parts (e.g., parts or materials purchased and/or installed on a vehicle after manufacture of the vehicle and purchase by a user), and vehicle specification information associated with the vehicle and the received data indicating that the vehicle was involved in the accident includes one or more of an indication of airbag deployment, an indication of vehicle impact, a deceleration value above a first predetermined threshold, and a braking force value above a second predetermined threshold.

In some embodiments, to compare the received data with the other known data to identify whether the accident resulted in the total loss, the accident assessment server may identify, based on the received data, a make, model, and year associated with the vehicle involved in the accident. The accident assessment server may sort one or more databases based on the make model and year associated with the vehicle and compare, via the machine learning algorithms, other known data associated with one or more vehicles of the make, model, and year corresponding to the vehicle.

In some embodiments, the accident assessment server may search one or more databases storing information associated with the vehicle which may include a vehicle identification number (VIN) database, used car listing database, vehicle history database, vehicle maintenance history database, state department of motor vehicle database, and insurance claims database.

In some embodiments, to identify a baseline value range for the vehicle, the loss assessment server may search one or more databases storing vehicle value data based on the received data and further data associated with the vehicle.

In some embodiments, responsive to determining that the final value of the vehicle is not within the baseline value range of the vehicle, the accident assessment server may schedule a vehicle inspection appointment with the owner of the vehicle.

These features, along with many others, are discussed in greater detail below.

### BRIEF DESCRIPTION OF THE DRAWINGS

A more complete understanding of aspects described herein and the advantages thereof may be acquired by referring to the following description in consideration of the accompanying drawings, in which like reference numbers indicate like features, and wherein:

FIGS. 1A and 1B depict an illustrative computing environment for machine learning based accident assessment in accordance with one or more aspects of the disclosure;

FIGS. 2A, 2B, 2C, 2D, 2E, and 2F depict an illustrative event sequence for machine learning based accident assessment in accordance with one or more aspects of the disclosure;

FIG. 3 depicts an illustrative method for machine learning based accident assessment in accordance with one or more aspects of the disclosure; and

FIG. 4 illustrates a network environment and computing systems that may be used to implement one or more aspects of the disclosure.

### DETAILED DESCRIPTION

In the following description of the various embodiments, reference is made to the accompanying drawings, which



form a part hereof, and in which is shown by way of illustration various embodiments in which aspects described herein may be practiced. It is to be understood that other embodiments may be utilized and structural and functional modifications may be made without departing from the scope of the described aspects and embodiments. Aspects described herein are capable of other embodiments and of being practiced or being carried out in various ways. Also, it is to be understood that the phraseology and terminology used herein are for the purpose of description and should not be regarded as limiting. Rather, the phrases and terms used herein are to be given their broadest interpretation and meaning. The use of “including” and “comprising” and variations thereof is meant to encompass the items listed thereafter and equivalents thereof as well as additional items and equivalents thereof. The use of the terms “mounted,” “connected,” “coupled,” “positioned,” “engaged” and similar terms, is meant to include both direct and indirect mounting, connecting, coupling, positioning and engaging.

As will be appreciated by one of skill in the art upon reading the following disclosure, various aspects described herein may be embodied as a method, a computer system, or a computer program product. Accordingly, those aspects may take the form of an entirely hardware embodiment, an entirely software embodiment or an embodiment combining software and hardware aspects. In addition, aspects may take the form of a computing device configured to perform specified actions. Furthermore, such aspects may take the form of a computer program product stored by one or more computer-readable storage media having computer-readable program code, or instructions, embodied in or on the storage media. Any suitable computer readable storage media may be utilized, including hard disks, CD-ROMs, optical storage devices, magnetic storage devices, and/or any combination thereof. In addition, various signals representing data or events as described herein may be transferred between a source and a destination in the form of electromagnetic waves traveling through signal-conducting media such as metal wires, optical fibers, and/or wireless transmission media (e.g., air and/or space).

As will be described in further detail below, a vehicle comprising a plurality of sensors and communication devices may be involved in an accident. The vehicle operational data of the vehicle may be determined by the plurality of sensors at the time of the accident and may be transmitted by one or more of the communication devices to an accident assessment server. At the accident assessment server, machine learning algorithms may be utilized to compare the vehicle operational data with other known and/or available vehicle operational data to determine whether the accident resulted in a total loss of the vehicle.

In some instances, if it is determined that the accident caused a total loss, the accident assessment server may request further information about the vehicle from one or more electronic devices of the vehicle (e.g., telematics device, on-board computer, and the like). The further information, in addition to the vehicle operational data at the time of the accident, may be used to identify a baseline value range for the vehicle prior to the occurrence of the accident. The accident assessment server may transmit a request for updated information regarding the vehicle to a mobile device associated with the owner of the vehicle and may receive updated vehicle information in return. The updated vehicle information may be used to identify a final value of the vehicle before the accident occurred. In some cases, if the final value of the vehicle is within the baseline value range for the vehicle, the accident assessment server may

provide payment to the owner of the vehicle of an amount corresponding to the final value.

FIG. 1A depicts an illustrative computing environment for machine learning based accident assessment in accordance with one or more aspects of the disclosure. The accident assessment system 100 may include vehicle 110, accident assessment server 130, and one or more third party databases 140. The vehicle 110 may include one or more components associated therewith such as vehicle operation sensors 111, GPS 112, telematics device 113, vehicle communication system 114, on-board computer 115, and the like. Additionally, mobile computing device 120 may be included in vehicle 110. In some instances, the mobile device 120 may be associated with an owner, driver, or passenger of vehicle 110. The vehicle 110 and one or more components associated therewith (e.g., vehicle operation sensors 111, GPS 112, telematics device 113, vehicle communication system 114, on-board computer 115, and the like), mobile device 120, accident assessment server 130, and one or more third party databases 140 may be configured to communicate with each other through network 150. Each component shown in FIG. 1A may be implemented in hardware, software, or a combination of the two. Additionally, each component of the accident assessment system 100 may include a computing device (or system) having some or all of the structural components described below in regard to computing device 401 of FIG. 4.

Vehicle 110 of the accident assessment system 100 may be an automobile, motorcycle, scooter, bus, van, truck, semi-truck, train, boat, recreational vehicle, or other vehicle. The vehicle 110 may further be an autonomous vehicle, semi-autonomous vehicle, or non-autonomous vehicle. In some examples, vehicle 110 may include vehicle operation/performance sensors 111 capable of detecting, recording, and transmitting various vehicle performance and/or operational data and environmental conditions data. For example, sensors 111 may detect, store, and transmit data corresponding to the vehicle's speed, rates of acceleration and/or deceleration, braking, swerving, and the like. Sensors 111 also may detect, store and/or transmit data received from the vehicle's internal systems, such as impact to the body of the vehicle, air bag deployment, headlight usage, brake light operation, door opening and closing, door locking and unlocking, cruise control usage, hazard light usage, windshield wiper usage, horn usage, turn signal usage, seat belt usage, phone and radio usage within the vehicle, internal decibel levels, and other data collected by the vehicle's computer systems.

Sensors 111 also may detect, store, and/or transmit data relating to moving violations and the observance of traffic signals and signs by the vehicle 110. Additional sensors 111 may detect, store, and transmit data relating to the maintenance of the vehicle 110, such as the engine status, oil level, maintenance levels and/or recommendations, engine coolant temperature, odometer reading, the level of fuel in the fuel tank, engine revolutions per minute (RPMs), and/or tire pressure.

The sensors 111 of vehicle 110 may further include one or more cameras and proximity sensors capable of recording additional conditions inside or outside of the vehicle 110. Internal cameras may detect conditions such as the number of the passengers in the vehicle 110, and potential sources of driver distraction within the vehicle (e.g., pets, phone usage, and unsecured objects in the vehicle). External cameras and proximity sensors may be configured to detect environmental conditions data such as nearby vehicles, vehicle spacing, traffic levels, road conditions and obstacles, traffic obstruc-

tions, animals, cyclists, pedestrians, precipitation levels, light levels, sun position, and other conditions that may factor into driving operations of vehicle **110**.

Additionally, vehicle sensors **111** may be configured to independently transmit the above-mentioned data to one or more computing devices and/or systems including telematics device **113**, on-board computer **115**, mobile device **120**, and/or accident assessment server **130**. In some instances, the data transmission to the mobile device **120** and/or accident assessment server **130** may be performed via on-board computer **115**. In such cases, the on-board computer **115** may be configured to transmit the data received from vehicle sensors **111** to mobile device **120** and/or accident assessment server **130** by way of vehicle communication system **114**.

Vehicle **110** may include a Global Positioning System (GPS) **112** which may be used to generate data corresponding to the position, heading, orientation, location, velocity, and/or acceleration of vehicle **110**. GPS **112** may be configured to independently transmit the above-mentioned data to one or more computing systems including telematics device **113**, on-board computer **115**, mobile device **120**, and/or accident assessment server **130**. In some instances, the data transmission to the mobile device **120** and/or accident assessment server **130** may be performed via on-board computer **115**. In such cases, the on-board computer **115** may be configured to transmit the data received from GPS **112** to mobile device **120** and/or accident assessment server **130** by way of vehicle communication system **114**.

Telematics device **113** may be configured to receive vehicle performance and/or operational data and environmental conditions data in the form of a data stream from on-board computer **115** via a data port, Bluetooth interface, or any comparable communication interface of the vehicle **110**. For example, telematics device **113** may include an on-board diagnostic (OBD) device adapter and may be connected to an OBD port of the vehicle **110** through which on-board computer **115** may be configured to transmit data to telematics device **113**. In certain embodiments, telematics device **113** may be configured to receive vehicle performance and/or operational data and environmental conditions data directly from vehicle sensors **111**, GPS **112**, on-board computer **115**, and/or mobile device **120** via a wired or wireless connection. Telematics device **113** may include a memory to store data received from vehicle sensors **111**, GPS **112**, on-board computer **115**, and/or mobile device **120**.

The vehicle performance and/or operational data may be collected with appropriate permissions (e.g., from the driver, vehicle owner, etc.) and may include operational data from an industry standard port such as a SAE-1962 connector, or an on board diagnostic (“OBD”) port or other vehicle data acquiring component. For example, operation data accessible via the OBDII port includes speed and engine throttle position or other variable power controls of the vehicle power source. It may also include so called “extended OBDII” or OBDIII datasets that are specific to each manufacturer and also available with manufacturer permission such as odometer reading, seat belt status, activation of brakes, degree and duration of steering direction, etc., and implementation of accident avoidance devices such as turning signals, headlights, seatbelts, activation of automated braking systems (ABS), etc. Other information regarding the operation of the vehicle may be collected such as, but not limited to, interior and exterior vehicle temperature, window displacement, exterior vehicle barometric pressure, exhaust pressure, vehicle emissions, turbo blower pressure, turbo charger RPM, vehicle GPS location, etc. The system may

recognize or be configured to recognize a particular language emitted by the vehicle system and may configure the recording component to receive or convert data in SAE J1850, ISO IS09141 or KWP 2000 formats. Accordingly, U.S. and/or international OBD standards may be accommodated. For instance, data may be collected from a variety of U.S. and/or international port types to permit use in a variety of locations. Alternatively, this step may be performed by a processor after the data is recorded.

Telematics device **113** may also include sensors such as, but not limited, an accelerometer, compass, gyroscope, and GPS. Additionally, telematics device **113** may include antennas to communicate with other devices wirelessly. For example, telematics device **113** may communicate with on-board computer **115**, mobile device **120**, and/or accident assessment server **130** over a wide area network (WAN), cellular network, Wi-Fi network, and the like. Telematics device **113** may also communicate with on-board computer **115** and mobile device **120** via a Bluetooth connection. In certain embodiments, telematics device **113** may be configured to establish a secure communication link and/or channel with on-board computer **115**, mobile device **120**, and/or accident assessment server **130**.

In some arrangements, telematics device **113** may include a telematics application operating on on-board computer **115** and/or mobile computing device **120** and may utilize hardware components comprised within on-board computer **115** and/or mobile computing device **120** (e.g., memory, processors, communication hardware, etc.) to receive, store, and/or transmit vehicle performance and/or operational data and environmental conditions data.

Vehicle communication systems **114** may be vehicle-based data transmission systems configured to transmit vehicle information and operational data to external computing systems and/or other nearby vehicles and infrastructure, and to receive data from external computing systems and/or other nearby vehicles and infrastructure. In some examples, communication systems **114** may use the dedicated short-range communications (DSRC) protocols and standards to perform wireless communications between vehicles and/or external infrastructure such as bridges, guardrails, barricades, and the like.

Vehicle communication systems **114** may be implemented using wireless protocols such as WLAN communication protocols (e.g., IEEE 802.11), Bluetooth (e.g., IEEE 802.15.1), one or more of the Communication Access for Land Mobiles (CALM) wireless communication protocols and air interfaces, and the like. In certain systems, communication systems **114** may include specialized hardware installed in vehicle **110** (e.g., transceivers, antennas, etc.) to facilitate near field communication (NFC) and/or radio-frequency identification (RFID), while in other examples the communication systems **114** may be implemented using existing vehicle hardware components (e.g., radio and satellite equipment, navigation computers). In some instances, the vehicle communication systems **114** may be configured to transmit and receive data from vehicle sensors **111**, GPS **112**, telematics device **113**, on-board computer **115**, mobile device **120**, accident assessment server **130**, and/or one or more third party databases **140** over a wide area network (WAN), cellular network, Wi-Fi network, Bluetooth, RFID, and/or NFC.

On-board computer **115** may contain some or all of the hardware/software components as the computing device **401** of FIG. 4. Vehicle control computer **115** may be configured to operate one or more internal vehicle systems and/or components including at least a vehicle sound system,

dashboard display and/or heads-up display system, output speakers, interior lighting system, climate control system, ignition system, door locking system, and the like. Similarly, on-board computer **115** may be configured to operate one or more external vehicle systems and/or components including windshield wipers, exterior lighting systems (e.g., headlights, tail lights, running lights, turn signals, emergency lights, etc.), emission and exhaust systems, fuel systems, suspension systems, transmission systems, and the like. In some instances, vehicle control computer **115** may be configured to perform the accident assessment methods as described in further detail below in conjunction with mobile computing device **120**, accident assessment server **130**, and/or one or more third party databases **140**.

Additionally, on-board computer **115** may include a display screen for presenting information to a driver of vehicle **110** pertaining to any of a plurality of applications such as a telematics application, accident assessment application **117**, and the like. In some instances, the display screen may be a touch screen and may be configured to receive user touch input. Alternatively, the display screen may not be a touch screen and, instead, the on-board computer **115** may receive user input and provide output through one or more of the input/output modules **409** described in detail in regard to FIG. **4**.

Mobile computing device **120** may be, for example, a mobile phone, personal digital assistant (PDA), or tablet computer associated with the driver or passenger(s) of vehicle **110**. As such, mobile computing device **120** may be included within the vehicle **110** and, in some instances, may be used to independently collect vehicle driving data and/or to receive vehicle driving and operational/performance data, environmental conditions data, accident assessment data, other known data (e.g., historical vehicle operational data and environmental conditions data associated with historical vehicle accidents, last known vehicle mileage data, original manufacturer factory options data, etc.), and the like from one or more computing systems (e.g., vehicle operation sensors **111**, GPS **112**, telematics device **113**, on-board computer **115**, accident assessment server **130**, and/or one or more third party databases **140**). In one example, software applications executing on mobile computing device **120** (e.g., telematics application and/or accident assessment application **117**) may be configured to independently detect driving data and/or to receive vehicle driving data and/or environmental conditions data, accident assessment data, other known data, and the like from one or more internal and/or external computing systems. With respect to independent vehicle data detection and collection, mobile device **120** may be equipped with one or more accelerometers and/or GPS systems which may be accessed by software applications executing on mobile computing device **120** to determine vehicle location (e.g., longitude, latitude, and altitude), heading (e.g., orientation), velocity, acceleration, direction, and other driving data. As stated above, mobile computing device **120** may be configured to transmit the independently collected vehicle driving data and/or the received vehicle driving data, environmental conditions data, accident assessment data, other known data, and the like to one or more computing devices (e.g., telematics device **113**, on-board computer **115**, and/or accident assessment server **130**).

Additionally, mobile computing device **120** may be configured to perform one or more of the methods and/or processes corresponding to the accident assessment as described in further detail below in conjunction with on-board computer **115** and/or accident assessment server **130**.

In performing such methods, mobile device **120** may be configured to detect and store vehicular operational and/or navigation data, and may be further configured to transmit the vehicular operational and/or navigation data to on-board computer **115** and/or accident assessment server **130**. Furthermore, mobile device **120** may be configured to receive vehicle operational data, environmental conditions data, accident assessment data, other known data, and/or data produced during the performance of the methods corresponding to the accident assessment from sensors **111**, GPS **112**, telematics device **113**, on-board computer **115**, accident assessment server **130**, and/or one or more third party databases **140**.

The accident assessment analysis system **100** may include an accident assessment server **130**. The accident assessment server **130** may be a computing device containing some or all of the hardware/software components as the computing device **401** of FIG. **4**. In some instances, the analysis of the vehicular data, accident data, other known data, and the like, as described in further detail below, may be performed by accident assessment server **130**. In such instances, any one, or combination of, sensors **111**, GPS **112**, telematics device **113**, on-board computer **115**, mobile device **120**, and one or more third party databases **140** may transmit data to accident assessment server **130**. Such data may include any of the above-mentioned vehicle driving and operational/performance data, environmental conditions data, other known data, and the like. Upon receipt of the data, accident assessment server **130**, alone or in combination, with mobile device **120** and/or on-board computer **115** may be able to perform the processes outlined below.

The one or more third party databases **140** may contain some or all of the hardware/software components as the computing device **401** of FIG. **4**. Each of the one or more third party databases may be respectively associated with a particular entity related to the management, purchase, repair, and the like of vehicles. In particular, each of the one or more third party databases may be a Department of Motor Vehicles (DMV) database, insurance company database, vehicle identification number (VIN) database, used car listing database, automotive sales database (e.g., recently sold vehicles database), vehicle history database, vehicle maintenance history database, vehicle manufacturer options database, predicted vehicle value database, and the like. As such, each of the one or more third party databases **140** may store data corresponding to a vehicle (e.g., vehicle **110**) and/or information corresponding to and/or, for determining, a predicted final value of the vehicle such as at least the other known data mentioned above. Such data may be related to vehicle operational data (e.g., last known vehicle mileage), vehicle specification data (e.g., vehicle manufacturer part information associated with the vehicle **110**), accident and insurance claims data, registration and ownership data, vehicle value data, and the like. Specifically, each of the one or more third party databases **140** may store data such as vehicle mileage, vehicle accident history and vehicle operational data corresponding to accidents, total loss data and corresponding vehicle operational data, and the like. Additionally, the one or more third party databases **140** may be configured to receive and transmit data to telematics device **113**, on-board computer **115**, mobile device **120**, and accident assessment server **130**.

As stated above, computing environment **100** also may include one or more networks, which may interconnect one or more of vehicle **110** and the components associated therewith (e.g., vehicle operation sensors **111**, GPS **112**, telematics device **113**, vehicle communication system **114**,

on-board computer **115**, and the like), mobile device **120**, accident assessment server **130**, and one or more third party databases **140**. For example, computing environment **100** may include network **150**. Network **150** may include one or more sub-networks (e.g., local area networks (LANs), wide area networks (WANs), or the like).

Referring to FIG. 1B, accident assessment server **130** may include processor(s) **131**, communication interface(s) **132**, and memory **133**. A data bus may interconnect processor(s) **131**, communication interface(s) **132**, and memory **133**. Communication interface(s) **132** may be a network interface configured to support communication between accident assessment server **130** and one or more networks (e.g., network **150**).

Memory **133** may include one or more program modules having instructions that when executed by processor(s) **131** cause accident assessment server **130** to perform one or more functions described herein and/or one or more databases that may store and/or otherwise maintain information which may be used by such program modules and/or processor(s) **131**. In some instances, the one or more program modules and/or databases may be stored by and/or maintained in different memory units of accident assessment server **130**. For example, memory **133** may have, store, and/or include a user profile database **133a**, accident assessment module **133b**, loss determination module **133c**, payment module **133d**, machine learning engine **133e**, and historical data and analysis database **133f**.

User profile database **133a** may store information corresponding to an owner of vehicle **110**. Such information may relate to insurance account information associated with the owner, vehicle information associated with the owner, financial information associated with the owner, and information as pertaining to the owner's usage of the accident assessment module **133b**, loss determination module **133c**, payment module **133d**, machine learning engine **133e**, and historical data and analysis database **133f**, as described in further detail below.

Accident assessment module **133b** may have instructions that direct and/or cause accident assessment server **130** to receive vehicle operational data from one or more of vehicle **110** and one or more components associated therewith (e.g., vehicle operation sensors **111**, GPS **112**, telematics device **113**, vehicle communication system **114**, on-board computer **115**, and the like) and mobile device **120**. The accident assessment module **133b** may have further instructions that direct and/or cause accident assessment server **130** to identify, based on the received vehicle operational data, whether vehicle **110** has been involved in an accident. Additionally, accident assessment module **133b** may perform other functions, as discussed in greater detail below.

Loss determination module **133c** may have or include instructions that direct and/or cause accident assessment server **130** to identify, based on the vehicle operational data indicating an accident occurred, whether or not the accident resulted in a total loss. In particular, loss determination module **133c** may utilize machine learning engine **133e** to compare the vehicle operational data indicating the occurred with historical accident data corresponding to a total loss in historical data and analysis database **133f** to identify whether or not the accident resulted in a total loss.

Payment module **133d** may have or include instructions that allow accident assessment server **130** to provide payment to an owner of vehicle **110**. In some instances, payment to the owner of vehicle **110** by payment module **133d** of

accident assessment server **130** may be performed if loss determination module **133c** identifies that the accident resulted in a total loss.

Machine learning engine **133e** may have or include instructions that direct and/or cause accident assessment server **130** to set, define, and/or iteratively redefine parameters, rules, and/or other settings stored in historical data and analysis database **133f** and used by accident assessment module **133b** and loss determination module of accident assessment server **130** in performing the accident assessment, loss determination, and the like.

Historical data and analysis database **133f** may be configured to store historical data and other known data corresponding to information associated with vehicle **110**, vehicle operational data of previous accidents, as well as analysis data corresponding to past performances of accident assessment and loss determination. As stated above, in some instances, such data may be utilized by machine learning engine **133e** to calibrate machine learning algorithms used by analysis module **133b** and loss determination module of accident assessment server **130** in performing the accident assessment, loss determination, and the like.

FIGS. 2A, 2B, 2C, 2D, 2E, and 2F depict an illustrative event sequence for machine learning based accident assessment in accordance with one or more aspects of the disclosure. The event sequence described below in regard to FIGS. 2A, 2B, 2C, 2D, and 2E may include processing steps performed in response to an incident and/or accident involving real property or a vehicle of a user or dispatch requester. While the steps shown in FIGS. 2A, 2B, 2C, 2D, and 2E are presented sequentially, the steps need not follow the sequence presented and may occur in any order.

Referring to FIG. 2A, at step **201**, vehicle **110** may transmit vehicle operational data to accident assessment server **130**. In some instances, the vehicle operational data may be transmitted by one or more of vehicle operation sensors **111**, GPS **112**, telematics device **113**, vehicle communication system **114**, on-board computer **115**, and the like as one or more electronic signals. Additionally and/or alternatively, the vehicle operational data may be transmitted by mobile device **120**. The vehicle operational data may include all of the items of the vehicle operational data listed above, or a portion of the vehicle operational data (e.g., velocity, rates of acceleration and/or deceleration, braking, swerving, impact to the body of the vehicle, air bag deployment, and the like). In some instances, the data indicating that the vehicle was involved in the accident includes one or more of an indication of airbag deployment, an indication of vehicle impact, a deceleration value above a first predetermined threshold, and/or a braking force value above a second predetermined threshold.

At step **202**, the accident assessment module **133b** of accident assessment server **130** may receive the vehicle operational data (e.g., one or more electronic signals) from one or more of vehicle operation sensors **111**, GPS **112**, telematics device **113**, vehicle communication system **114**, on-board computer **115**, and the like. At step **203**, the accident assessment module **133b** may process the received one or more electronic signals corresponding to the vehicle operational data. In particular, the accident assessment module **133b** may perform one or more of smoothing, filtering, transforming (e.g., Fourier Transform, Discrete Fourier Transform, Fast Fourier Transform, and the like), companding, limiting, noise gating, and the like to isolate the vehicle operational data from the electronic signal sent from one or more of vehicle operation sensors **111**, GPS **112**, telematics

## 11

device 113, vehicle communication system 114, on-board computer 115, and the like comprising the vehicle operational data.

At step 204, the accident assessment module 133b of accident assessment server 130 may identify whether vehicle 110 was involved in an accident, based on the vehicle operational data received by way of the communication interface(s) 132. For example, accident assessment server 130 may receive vehicle operational data indicating that vehicle 110 has decelerated from 45 mph to 0 mph with high rotational velocity (e.g., swerving) and air bag deployment. Such data, when analyzed by the accident assessment module 133b of accident assessment server 130, may indicate that vehicle 110 has been involved in an accident. In some instances, the accident assessment module 133b of accident assessment server 130 may receive telematics data corresponding at least in part to impact data from pressure sensors on the body of the vehicle 110, which may indicate that vehicle 110 has been involved in an accident. At step 205, the loss determination module 133c of accident assessment server 130 may identify vehicle information from the received vehicle operational data. In some instances, the vehicle information may include a make, model, and year associated with the vehicle involved in the accident.

Referring to FIG. 2B, at step 206, the loss determination module 133c of the accident assessment server 130 may sort historical data and analysis database 133f based on the make, model, and year of the vehicle involved in the accident. In doing so, the loss determination module 133c may isolate data associated with previous accident assessments corresponding to the make, model, and year associated with the vehicle involved in the accident.

At step 207, the loss determination module 133c of accident assessment server 130 may compare the received vehicle operational data with the isolated data associated with previous accident assessments corresponding to the make, model, and year corresponding to the vehicle involved in the accident to identify whether the accident resulted in a total loss. In some instances, machine learning algorithms may be utilized by loss determination module 133c in performing the comparison. As such, loss determination module 133c may use machine learning engine 133e to compare the received vehicle telematics data with the vehicle telematics data of the isolated data associated with previous accident assessments corresponding to the make, model, and year associated with the vehicle involved in the accident. Such a comparison may identify one or more entries in historical data and analysis database 133f corresponding to the make, model, and year associated with the vehicle involved in the accident that were involved in accidents resulting in a total loss.

At step 208, responsive to determining that the accident resulted in a total loss of the vehicle, the accident assessment server 130 may request, by way of the communication interface(s) 132, further information regarding the vehicle from vehicle 110. In particular, the accident assessment server 130 may request further information regarding the vehicle 110 from one or more of vehicle operation sensors 111, GPS 112, telematics device 113, vehicle communication system 114, on-board computer 115, and the like.

In some instances, the accident assessment server 130 may be configured to control, command, and/or instruct one or more of the vehicle operation sensors 111, GPS 112, telematics device 113, vehicle communication system 114, on-board computer 115, and the like to transmit further information associated with vehicle 110 based on information needed to identify a baseline value range for the vehicle

## 12

110 as described below. For example, accident assessment server 130 may be configured to compare the vehicle operational data received at step 202 with data entries stored in historical data and analysis database 133f used to identify baseline value ranges for other vehicles. Based on the comparison, accident assessment server 130 may identify one or more data values needed to identify a baseline value range for vehicle 110. The accident assessment server 130 may be configured to control, command, and/or instruct one or more of the vehicle operation sensors 111, GPS 112, telematics device 113, vehicle communication system 114, on-board computer 115, and the like to transmit the identified data needed to identify the baseline value range for vehicle 110.

At step 209, the vehicle 110 (e.g., vehicle operation sensors 111, GPS 112, telematics device 113, vehicle communication system 114, on-board computer 115, and the like) may receive the request for further information and at step 210, may transmit the further information to accident assessment server 130. In some instances, the further information may correspond to vehicle specification information (e.g., vehicle part information) such as engine type, vehicle upgrade information (e.g., navigation system, sun roof, power windows, rim size, sound system, etc.), and the like. Furthermore, such information may include vehicle mileage information and vehicle maintenance information.

Referring to FIG. 2C, at step 211, the accident assessment server 130 may receive the further information from the vehicle 110 (e.g., vehicle operation sensors 111, GPS 112, telematics device 113, vehicle communication system 114, on-board computer 115, and the like).

Additionally and/or alternatively, the accident assessment server 130 may be configured to request the information needed to identify the baseline value range for the vehicle 110 from one or more third party databases 140. In some instances, the searching of the one or more of the third party databases 140 may be performed if the further information is not received from vehicle 110. In particular, accident assessment server 130, by way of loss determination module 133c and communication interface(s) 132, may request information associated with vehicle 110 such as original manufacturer factory options regarding vehicle parts, the last known mileage, and vehicle maintenance history. In some instances, such data may be stored in historical data and analysis database 133f. As such, accident assessment server 130 may be configured to request the necessary data to identify the baseline value range for the vehicle 110 from one or more of historical data and analysis database 133f and the one or more third party databases 140.

In other instances, the accident assessment server 130 may be configured to control, command, and/or instruct one or more of the third party databases 140 to transmit further information associated with vehicle 110 based on information needed to identify a baseline value range for the vehicle 110 as described below. For example, accident assessment server 130 may be configured to compare the vehicle operational data received at step 202 with data entries stored in historical data and analysis database 133f used to identify baseline value ranges for other vehicles. Based on the comparison, accident assessment server 130 may identify one or more data values needed to identify a baseline value range for vehicle 110. The accident assessment server 130 may be configured to control, command, and/or instruct one or more of the third party databases 140 to transmit the identified data needed to identify the baseline value range for vehicle 110.

At step 213, the one or more of the third party databases 140 may transmit the further information corresponding to the vehicle 110 to accident assessment server 130. At step 214, the accident assessment server 130 may receive the further information by way of communication interface(s) 132. At step 215, the loss determination module 133c may identify a baseline value range for the vehicle based on the vehicle operational data received at step 202 and the further information related to the vehicle received at step 214. In particular, loss determination module 133c may sort historical data and analysis database 133f based on the make, model, year, and further information (e.g., navigation system, sun roof, power windows, rim size, sound system, and the like) of the vehicle involved in the accident. In doing so, the loss determination module 133c may isolate data associated with previous accident assessments corresponding to the make, model, year, and further information associated with the vehicle involved in the accident to identify a baseline value range for the vehicle 110.

Referring to FIG. 2D, at step 216, additionally and/or alternatively, the loss determination module 133c of accident assessment server 130 may search one or more of the third party databases 140 to identify a baseline value range for the vehicle 110. In some instances, the searching of the one or more of the third party databases 140 may be performed if loss determination module 133c is unable to identify a baseline value range of the vehicle 110 from historical data and analysis database 133f. At step 217, the one or more of the third party databases 140 may transmit data corresponding to the baseline value range of the vehicle 110 to accident assessment server 130.

At step 218, the accident assessment server 130 may receive the baseline value range of the vehicle 110 from the one or more third party databases 140 by way of communication interface(s) 132. At step 219, the accident assessment server 130 may request updated vehicle specification information from a mobile device 120 associated with an owner of vehicle 110. In some instances, the request for updated vehicle specification information may include a prepopulated data sheet indicated believed-to-be information associated with the vehicle 110 such as make, model, year, mileage, and vehicle specification information (e.g., navigation system, sun roof, power windows, rim size, sound system, and the like). Furthermore, the request for updated vehicle specification information may include the baseline value range identified at step 213 and/or received at step 216. In any event, at step 220, the mobile device 120 may receive the request for updated vehicle specification information and at step 221, as shown in FIG. 2E, may transmit the updated information to accident assessment server 130. The updated information may include one or more of exact mileage, presence of aftermarket parts, and vehicle specification information associated with the vehicle. In some instances, the updated information may include revisions to the prepopulated data sheet, but in other instances the updated information may merely comprise an indication that the prepopulated data sheet included accurate information regarding vehicle 110. In any case, at step 222, the accident assessment server 130 may receive the updated information via communication interface(s) 132.

At step 223, the accident assessment server 130 may identify a final value of the vehicle 110 before the accident based on the updated vehicle specification information received at step 222. In some instances, the loss determination module 133c may identify the final value of the vehicle 110 before the accident based on the updated vehicle specification information received at step 222. In particular, loss

determination module 133c may sort historical data and analysis database 133f based on the make, model, year, and updated information (e.g., navigation system, sun roof, power windows, rim size, sound system, and the like) of the vehicle involved in the accident. In doing so, the loss determination module 133c may isolate data associated with previous accident assessments corresponding to the make, model, year, and further information associated with the vehicle involved in the accident to identify a final value for the vehicle 110.

Responsive to determining that the final value of the vehicle 110 before the accident is within the baseline value range of the vehicle identified at step 215, the payment module 133d of the accident assessment server 130 may provide payment to the owner of vehicle 110 at step 224A corresponding to the final value of the vehicle. Conversely, responsive to determining that the final value of the vehicle 110 is not within the baseline value range of the vehicle identified at step 215, the payment module 133d may schedule a vehicle inspection appointment with the owner of vehicle 110 by transmitting a scheduling request to the mobile device 120 of the owner at step 224B.

Referring to FIG. 2F, at step 225, the accident assessment server 130 may store the information (e.g., accident information, vehicle operational data at the time of the accident, vehicle specification information, identified baseline value range of the vehicle, final value of the vehicle, and the like) related to the vehicle 110 in historical data and analysis database 133f. Furthermore, at step 226, the accident assessment server 130 may update the machine learning algorithms used to identify whether the accident resulted in a total loss. For instance, the accident assessment server 130 may revise the machine learning algorithms if the final value of the vehicle was identified as being greater than the baseline value range of the vehicle, within the baseline value range of the vehicle, or less than the baseline value range of the vehicle.

FIG. 3 illustrates one example method for machine learning based accident assessment in accordance with one or more example embodiments. Referring to FIG. 3, at step 305, a computing device having at least one processor, communication interface and memory, may receive, via the communication interface, from a telematics device associated with a vehicle, data indicating that the vehicle was involved in an accident. At step 310, the computing device may compare, via machine learning algorithms, the received data with other known data to identify whether the accident resulted in a total loss. At step 315, responsive to determining that the accident resulted in the total loss, the computing device may request, by the communication interface, further information regarding the vehicle from the telematics device. At step 320, the computing device may identify, based on the received data and further data, a baseline value range for the vehicle. At step 325, the computing device may request, by the communication interface, from a mobile device associated with an owner of the vehicle, updated information regarding the vehicle. At step 330, the computing device may receive, by the communication interface, updated information from the mobile device of the owner of the vehicle. At step 335, the computing device may identify, based on the updated information, a final value of the vehicle.

FIG. 4 illustrates a block diagram of an accident assessment computing device 401 in a system that may be used according to one or more illustrative embodiments of the disclosure. The accident assessment computing device 401 may have a processor 403 for controlling overall operation

of an accident assessment computing device **401** and its associated components, including RAM **405**, ROM **407**, input/output module **409**, and memory unit **415**. The accident assessment computing device **401**, along with one or more additional devices (e.g., terminals **441**, **451**) may correspond to any of multiple systems or devices, such as accident assessment systems, configured as described herein for performing methods corresponding to the usage of machine learning algorithms to identify whether an accident resulted in a total loss.

Input/Output (I/O) module **409** may include a microphone, keypad, touch screen, and/or stylus through which a user of the accident assessment computing device **401** may provide input, and may also include one or more of a speaker for providing audio input/output and a video display device for providing textual, audiovisual and/or graphical output. Software may be stored within memory unit **415** and/or other storage to provide instructions to processor **403** for enabling accident assessment computing device **401** to perform various functions. For example, memory unit **415** may store software used by the accident assessment computing device **401**, such as an operating system **417**, application programs **419**, and an associated internal database **421**. The memory unit **415** includes one or more of volatile and/or non-volatile computer memory to store computer-executable instructions, data, and/or other information. Processor **403** and its associated components may allow the accident assessment computing device **401** to execute a series of computer-readable instructions to perform the one or more of the processes or functions described herein.

The accident assessment computing device **401** may operate in a networked environment **400** supporting connections to one or more remote computers, such as terminals/devices **441** and **451**. Accident assessment computing device **401**, and related terminals/devices **441** and **451**, may include devices installed in vehicles and/or homes, mobile devices that may travel within vehicles and/or may be situated in homes, or devices outside of vehicles and/or homes that are configured to perform aspects of the processes described herein. Thus, the accident assessment computing device **401** and terminals/devices **441** and **451** may each include personal computers (e.g., laptop, desktop, or tablet computers), servers (e.g., web servers, database servers), vehicle-based devices (e.g., on-board vehicle computers, short-range vehicle communication systems, sensors, and telematics devices), or mobile communication devices (e.g., mobile phones, portable computing devices, and the like), and may include some or all of the elements described above with respect to the dispatch control computing device **401**. The network connections depicted in FIG. 4 include a local area network (LAN) **425** and a wide area network (WAN) **429**, and a wireless telecommunications network **433**, but may also include other networks. When used in a LAN networking environment, the accident assessment computing device **401** may be connected to the LAN **425** through a network interface or adapter **423**. When used in a WAN networking environment, the accident assessment computing device **401** may include a modem **427** or other means for establishing communications over the WAN **429**, such as network **431** (e.g., the Internet). When used in a wireless telecommunications network **433**, the accident assessment computing device **401** may include one or more transceivers, digital signal processors, and additional circuitry and software for communicating with wireless computing devices **441** (e.g., mobile phones, short-range vehicle communication systems, vehicle sensing and telematics

devices) via one or more network devices **435** (e.g., base transceiver stations) in the wireless network **433**.

It will be appreciated that the network connections shown are illustrative and other means of establishing a communications link between the computers may be used. The existence of any of various network protocols such as TCP/IP, Ethernet, FTP, HTTP and the like, and of various wireless communication technologies such as GSM, CDMA, Wi-Fi, and WiMAX, is presumed, and the various computing devices and components described herein may be configured to communicate using any of these network protocols or technologies.

Additionally, one or more application programs **419** used by the computing device **401** may include computer-executable instructions for receiving data and performing other related functions as described herein.

Such an arrangement and processes as described above may provide distinct technological advantages. In particular, through the utilization of machine learning algorithms to identify whether an accident occurred, processing efficiency may be increased and processing energy expenditure may be decreased. Moreover, by leveraging vehicle computing infrastructure (e.g., sensors, telematics device, on-board computer, and the like) to gather vehicle information and operational data, increased accuracy and reliability of identified information (e.g., whether accident occurred, whether total loss occurred, baseline value of vehicle, final value of vehicle, and the like) may be achieved.

As will be appreciated by one of skill in the art, the various aspects described herein may be embodied as a method, a computer system, or a computer program product. Accordingly, those aspects may take the form of an entirely hardware embodiment, an entirely software embodiment or an embodiment combining software and hardware aspects. Furthermore, such aspects may take the form of a computer program product stored by one or more computer-readable storage media having computer-readable program code, or instructions, embodied in or on the storage media. Any suitable computer readable storage media may be utilized, including hard disks, CD-ROMs, optical storage devices, magnetic storage devices, and/or any combination thereof. In addition, various signals representing data or events as described herein may be transferred between a source and a destination in the form of electromagnetic waves traveling through signal-conducting media such as metal wires, optical fibers, and/or wireless transmission media (e.g., air and/or space).

Although the subject matter has been described in language specific to structural features and/or methodological acts, it is to be understood that the subject matter defined in the appended claims is not necessarily limited to the specific features or acts described above. Rather, the specific features and acts described above are disclosed as example forms of implementing the claims.

What is claimed is:

1. An accident assessment server, comprising:
  - at least one processor;
  - a communication interface communicatively coupled to the at least one processor; and
  - memory storing computer-readable instructions that, when executed by the at least one processor, cause the accident assessment server to:
    - receive vehicle operational data from a telematics device associated with a vehicle;
    - determine, from the operational data, if the vehicle was involved in an accident;

17

determine, by machine learning algorithms, based on comparing historical accident data with data received from the telematics device associated with the vehicle, that the accident resulted in a total loss; and  
 responsive to determining that the accident resulted in the total loss:  
 request further information associated with a baseline monetary value range for the vehicle;  
 determine, based on receiving the further information from the telematics device, the baseline monetary value range for the vehicle;  
 request updated information associated with the vehicle;  
 determine, by a loss determination model, based on receiving the updated information regarding the vehicle from a device associated with an owner of the vehicle, a final monetary value of the vehicle; and  
 determine, based on whether the final monetary value of the vehicle is within in the baseline monetary value range for the vehicle, whether to provide payment to the owner of the vehicle.

2. The accident assessment server of claim 1, wherein the instructions, when executed by the at least one processor, further cause the accident assessment server to:  
 responsive to determining that the final monetary value of the vehicle is within the baseline monetary value range of the vehicle, provide the payment to the owner, wherein the payment corresponds to the final monetary value of the vehicle.

3. The accident assessment server of claim 1, wherein the data received from the telematics device comprises one or more of: an indication of airbag deployment, an indication of vehicle impact, a deceleration value above a first predetermined threshold, and a braking force value above a second predetermined threshold, and  
 wherein the updated information comprises one or more of: mileage, presence of aftermarket parts, and vehicle specification information associated with the vehicle.

4. The accident assessment server of claim 1, wherein the data received from the telematics device comprise a make, model, and year of the vehicle, and  
 wherein the instructions, when executed by the at least one processor, further cause the accident assessment server to compare the historical accident data with the data received from the telematics device by:  
 querying a database for historical accidents associated with one or more vehicles of the make, model, and year of the vehicle; and  
 comparing the data received from the telematics device with the historical accidents associated with the one or more vehicles of the make, model, and year of the vehicle.

5. The accident assessment server of claim 1, wherein the instructions, when executed by the at least one processor, further cause the accident assessment server to:  
 receive, from one or more databases storing information associated with the vehicle, the further information, wherein the one or more databases comprise at least one of: a vehicle identification number (VIN) database, a used car listing database, a vehicle history database, a vehicle maintenance history database, a state department of motor vehicle database, and an insurance claims database.

18

6. The accident assessment server of claim 1, wherein the instructions, when executed by the at least one processor, further cause the accident assessment server to:  
 schedule, responsive to determining that the final monetary value of the vehicle is outside of the baseline monetary value range of the vehicle, a vehicle inspection appointment with the owner of the vehicle.

7. The accident assessment server of claim 6, wherein the instructions, when executed by the at least one processor, further cause the accident assessment server to:  
 transmit, to the device of the owner of the vehicle, a scheduling request for the vehicle inspection appointment.

8. A method, comprising:  
 receiving vehicle operational data from a telematics device associated with a vehicle;  
 determining, from the operational data, if the vehicle was involved in an accident;  
 determining, by machine learning algorithms and by a computing device, and based on comparing historical accident data with the operational data received from the telematics device associated with the vehicle, that the accident resulted in a total loss; and  
 responsive to determining that the accident resulted in a total loss:  
 requesting further information associated with a baseline monetary value range for the vehicle;  
 determining, based on receiving the further information from the telematics device, the baseline monetary value range for the vehicle;  
 requesting updated information associated with the vehicle;  
 determining, by a loss determination model, based on receiving the updated information regarding the vehicle from a device associated with an owner of the vehicle, a final monetary value of the vehicle; and  
 determining, based on whether the final monetary value of the vehicle is within the baseline monetary value range for the vehicle, whether to provide payment to the owner of the vehicle.

9. The method of claim 8, further comprising:  
 providing, by the computing device and responsive to determining that the final monetary value of the vehicle is within the baseline monetary value range of the vehicle, the payment to the owner, wherein the payment corresponds to the final monetary value of the vehicle.

10. The method of claim 8, wherein the updated information comprises one or more of: mileage, presence of aftermarket parts, and vehicle specification information associated with the vehicle.

11. The method of claim 8, wherein the data received from the telematics device comprises one or more of: an indication of airbag deployment, an indication of vehicle impact, a deceleration value above a first predetermined threshold, and a braking force value above a second predetermined threshold.

12. The method of claim 8, wherein the data received from the telematics device comprise a make, model, and year of the vehicle, and  
 wherein comparing the historical accident data with the data received from the telematics device comprises:  
 querying a database for historical accidents associated with one or more vehicles of the make, model, and year of the vehicle; and



## 19

comparing the data received from the telematics device with the historical accidents associated with the one or more vehicles of the make, model, and year of the vehicle.

13. The method of claim 8, the method further comprising: 5

receiving, from one or more databases storing information associated with the vehicle, the further information, wherein the one or more databases comprise at least one of: a vehicle identification number (VIN) database, a used car listing database, a vehicle history database, a vehicle maintenance history database, a state department of motor vehicle database, and an insurance claims database.

14. The method of claim 8, further comprising: 15  
scheduling, by the computing device and responsive to determining that the final monetary value of the vehicle is outside of the baseline monetary value range of the vehicle, a vehicle inspection appointment with the owner of the vehicle.

15. The method of claim 14, further comprising: 20  
transmitting, to the device of the owner of the vehicle, a scheduling request for the vehicle inspection appointment.

16. One or more non-transitory, computer-readable media storing instructions that, when executed by at least one processor, cause a computing device to: 25

receive vehicle operational data from a telematics device associated with a vehicle;

determine, from the operational data, if the vehicle was involved in an accident; 30

determine, by machine learning algorithms, based on comparing historical accident data with data received from the telematics device associated with the vehicle, that the vehicle was involved in an accident resulted in a total loss; and 35

responsive to determining that the accident resulted in the total loss:

request further information associated with a baseline monetary value range for the vehicle; 40

determine, based on receiving the further information from the telematics device, the baseline monetary value range for the vehicle;

request updated information associated with the vehicle;

## 20

determine, by a loss determination model, based on receiving the updated information regarding the vehicle from a device associated with an owner of the vehicle, a final monetary value of the vehicle; and determine, based on whether the final monetary value of the vehicle is within in the baseline monetary value range for the vehicle, whether to provide payment to the owner of the vehicle.

17. The one or more non-transitory, computer-readable media of claim 16, wherein the instructions, when executed at least one processor, cause the computing device to: 10

responsive to determining that the final monetary value of the vehicle is within the baseline monetary value range of the vehicle, provide the payment to the owner of the vehicle, wherein the payment corresponds to the final monetary value of the vehicle. 15

18. The one or more non-transitory, computer-readable media of claim 16, wherein the data received from the telematics device comprise a make, model, and year of the vehicle, and 20

wherein the instructions, when executed by the at least one processor, cause the computing device to compare the historical accident data with the data received from the telematics device by: 25

querying a database for historical accidents associated with one or more vehicles of the make, model, and year of the vehicle; and

comparing the data received from the telematics device with the historical accidents associated with the one or more vehicles of the make, model, and year of the vehicle. 30

19. The one or more non-transitory, computer-readable media of claim 16, wherein the instructions, when executed by the at least one processor, cause the computing device to: 35

schedule, responsive to determining that the final monetary value of the vehicle is outside of the baseline monetary value range of the vehicle, a vehicle inspection appointment with the owner of the vehicle.

20. The one or more non-transitory, computer-readable media of claim 19, wherein the instructions, when executed by the at least one processor, cause the computing device to: 40  
transmit, to the device of the owner of the vehicle, a scheduling request for the vehicle inspection appointment.

\* \* \* \* \*