

# 2024 PRESS KIT

The Following Information is embargoed until November 7th at 11AM CT.



# INDIAN MOTORCYCLE ANNOUNCES 2024 MODEL YEAR LINEUP

HIGHLIGHTED BY LIMITED-EDITION FTR x 100%<sup>®</sup> R CARBON,  
INDIAN CHALLENGER ELITE & REDESIGNED POWERBAND AUDIO







# 2024 LINEUP

Indian Motorcycle, America's First Motorcycle Company, announces a brand collaboration with the popular American motocross brand 100%®, along with its full 2024 model year lineup. Highlighted by a limited-edition FTR x 100%® R Carbon, the 2024 lineup features a new Indian Challenger Elite, a completely redesigned PowerBand Audio system, and updates across the entire Indian Motorcycle lineup.

The 2024 Indian Motorcycle lineup delivers a robust offering of American V-Twin motorcycles unlike anything else on the road. Featuring quality craftsmanship, world-class performance and iconic style, Indian Motorcycle features a wide lineup ranging from the sleek and stylish FTR street bike to its Scout and Chief cruisers, to a diverse range of baggers and touring models, including the Indian Super Chief, Indian Springfield, Chieftain, Indian Challenger and fully loaded Roadmaster and Indian Pursuit models.

“It’s amazing to think how far we’ve come in developing and expanding our lineup of motorcycles, delivering a wide range of new models and trim offerings in a variety of styles to meet the diverse tastes and needs of our global riding community,” said Mike Dougherty, President of Indian Motorcycle. “Riders are choosing Indian Motorcycle. We’re growing share and growing retail volume all over the world. We’ve received incredible rider feedback and continue to refine, enhance, and fine-tune our lineup and accessories based off this feedback.”

In addition to exciting new paint colors, Indian Motorcycle has improved fit and finish on baggers and touring models, as models receive a gloss paint finish across the dash visor, storage door, dash trim and gauge bezel.

The 2024 Indian Motorcycle lineup will begin shipping this month to Indian Motorcycle dealers throughout the U.S. and Canada. Riders can learn more at their local Indian Motorcycle dealership, by visiting [IndianMotorcycle.com](https://IndianMotorcycle.com), or by following along on Facebook, Twitter and Instagram.



## CONTACT:

Alex Caswell | 714-401-4079 | [IMCPR@TheBrandAmp.com](mailto:IMCPR@TheBrandAmp.com)





## 2024 LINEUP HIGHLIGHTS

# FTR x 100%<sup>®</sup> R CARBON

### INDIAN MOTORCYCLE x 100%<sup>®</sup>

Indian Motorcycle has teamed up with 100%<sup>®</sup> to celebrate riders who dare to carve their own path. With 100%<sup>®</sup> linked to iconic moments that have built today's modern motocross and Indian Motorcycle's celebrated 123-year history in motorcycling, these two American brands have helped shape the rich fabric of motorcycling with their respective trailblazing spirits.

### STYLE

Pulling styling cues from 100%'s roots in action sports, the FTR x 100%<sup>®</sup> R Carbon has been beautifully designed for the performance-minded rider who wants to stand out from the crowd. The bike features a one-of-a-kind Blue Candy carbon fiber tank, headlight nacelle, seat cowl and front fender. Its bright white powder coated frame pops, while gloss paint finishes and red accents throughout deliver a high-quality fit and finish.

Collectively, the FTR x 100%<sup>®</sup> R Carbon is a raw slice of Americana. Built on the top-of-the-line FTR R Carbon, the FTR x 100%<sup>®</sup> R Carbon features even more upgrades and details that set it apart. Striking Indian Motorcycle and 100%<sup>®</sup> co-branding highlight each tank side, its rear seat cowl, and the chin fairing. Race-ready Öhlins<sup>®</sup> front forks and rear shock spring get custom blacked out treatment for 100% more attitude. A black-finished Titanium Akrapovič<sup>®</sup> exhaust and carbon fiber components — engine covers, chain guard and exhaust heat shield — add custom detailing expected on a limited-edition model. Exacting attention to craftsmanship shines with Gilles Tooling parts, including bar-end weights, oil cap and radiator cap.

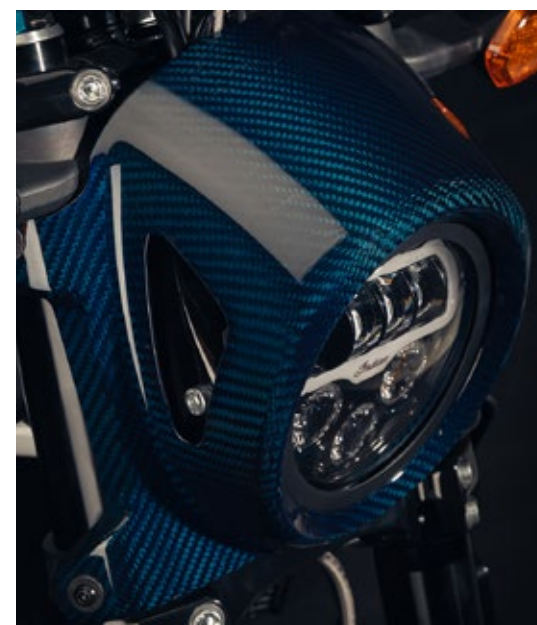
### PERFORMANCE

Nothing is standard about the performance of FTR x 100%<sup>®</sup> R Carbon: featuring a 120-horsepower, liquid-cooled V-twin engine with 87 ft-lb of torque, radially mounted dual-disc Brembo<sup>®</sup> brakes, a 4-Inch Touchscreen Display Powered by RIDE COMMAND with turn-by-turn navigation, Bluetooth<sup>®</sup> connectivity and three selectable ride modes, Rain, Standard and Sport, which deliver a personalized riding experience.

### LIMITED EDITION AVAILABILITY

The FTR x 100%<sup>®</sup> R Carbon is highly exclusive, with only 400 motorcycles available around the world. Bikes will begin shipping to dealers this month.

Riders purchasing the FTR x 100%<sup>®</sup> R Carbon will receive a complementary pair of Indian Motorcycle x 100%<sup>®</sup> sunglasses.

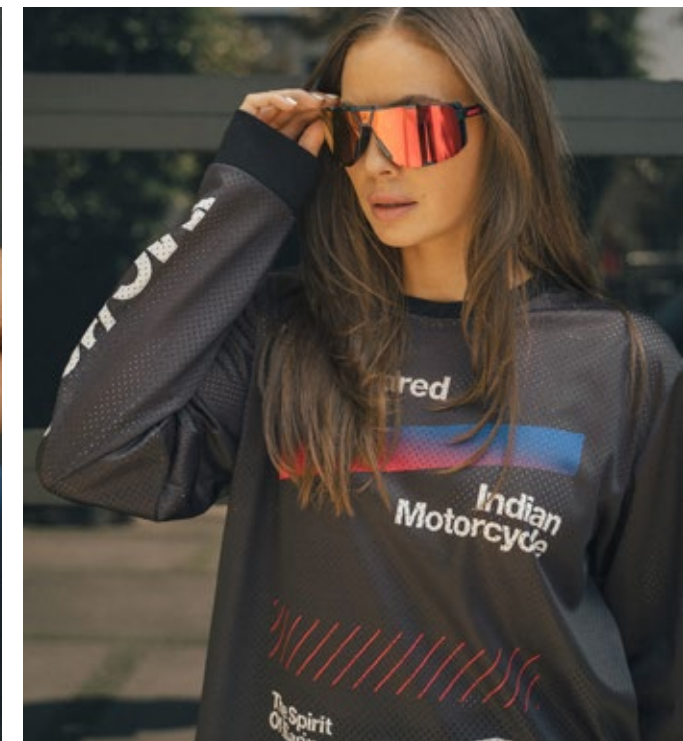






## INDIAN MOTORCYCLE x 100%<sup>®</sup> APPAREL COLLECTION

Launching alongside the limited-edition FTR x 100%<sup>®</sup> R Carbon is an exclusive Indian Motorcycle x 100%<sup>®</sup> Apparel Collection. Offering a diverse mix of men's and women's lifestyle pieces, the collection includes long and short sleeved tops, hoodies, hats, beanies, and sunglasses. The co-branded apparel collection is available in men's sizes S-3XL and women's sizes XS-2XL. Pricing for the Indian Motorcycle x 100%<sup>®</sup> apparel collection ranges from \$29.99 to \$185.00 USD and will be available at select Indian Motorcycle dealerships and online starting at [IndianMotorcycle.com](https://www.IndianMotorcycle.com).







## 2024 LINEUP HIGHLIGHTS

# INDIAN CHALLENGER ELITE

The 2024 Indian Challenger Elite delivers on its promise as the ultimate American bagger. With only 325 available around the world, riders will turn heads with its custom-inspired Charcoal Candy paint scheme, while first-class amenities provide comfort and confidence when logging long miles in the saddle.

The class-leading bagger is standard with Indian Motorcycle's all-new, completely redesigned PowerBand Audio system, featuring four 100-watt speakers, two fairing speakers and two saddlebag speakers, along with an all-new, custom-stitched seat, delivering one-of-a-kind style and all-day riding comfort.

Packing a class-leading, 122-horsepower PowerPlus engine, Indian Challenger Elite delivers incredible V-twin performance with unmatched passing power. The Indian Challenger Elite's premium features include electronically adjustable rear suspension preload from FOX®, Smart Lean Technology, an adaptive LED Headlight, LED driving lights, an adjustable flare windscreen, driver and passenger Headdress Floorboards, heated grips, saddlebag lights, saddlebag closeouts, and three selectable ride modes, including Tour, Standard and Sport, which deliver a personalized riding experience based off rider preferences. All-in, whether riding two-up for a weekend adventure or commuting solo, the Indian Challenger Elite delivers the ultimate in style and exclusivity.

The Indian Challenger Elite will begin shipping to dealers this month.





TAKE A FRONT ROW SEAT WITH THE LOUDEST AUDIO IN INDIAN MOTORCYCLE HISTORY



9 BAND EQUALIZER | PRE-TUNED SETTINGS | RIDE COMMAND INTEGRATION | UNDERGLOW LIGHTING

FRONT FAIRING

LOWER FAIRING

SADDLEBAG

TRUNK

# POWERBAND AUDIO

Redesigned for Indian Motorcycle baggers and touring models, upgraded PowerBand Audio kits raise the bar for premium audio systems with 100-watt speakers that produce higher volume, increased clarity, and more bass. Answering the call from riders, each speaker touts UnderGlow LED accent lighting, which delivers a custom-inspired look that stands out compared to standard audio systems.

The next-generation of PowerBand Audio features powerful sound, all-new styling, factory-backed quality, and easy installation.

## POWERFUL SOUND

The 100-watt PowerBand Audio speakers deliver an immediate increase in volume and clarity over the standard 50-watt speakers. PowerBand Audio's new Bass Boost Tune makes the music come alive with deeper bass lines, which result in 50% more bass when compared to previous PowerBand Audio offerings. New Dynamic EQ auto-optimizes in real-time for the highest quality audio as speed and conditions change. Speakers are durable, water-resistant and deliver an immersive listening experience – expertly designed to cut through road, wind, and throttle noise.

## UPGRADED STYLE

Featuring updated, custom-inspired style, PowerBand Audio speakers sport a chiseled, modern look and UnderGlow, soft-white LED accent rings. The titanium-plated dome stands out from the crowd and ensures the speakers look as good as they sound.

## INTUITIVE AUDIO CONTROLS

Once installed, Indian Motorcycle's industry-leading, 7 Inch Touchscreen Display powered by RIDE COMMAND automatically recognizes PowerBand Audio speakers and immediately upgrades the bike's Audio menu. With PowerBand Audio, riders receive a nine-band equalizer to fully customize settings and dial-in levels for any music genre.

## FACTORY-BACKED QUALITY

PowerBand Audio's Power Supply Temperature Protection actively monitors circuit temperature and adjusts to prevent internal damage or system shutdown in extreme heat conditions. The rugged design is water-resistant with an Ultra Coat sealing that provides protection from water, dirt, and debris. PowerBand Audio is designed and engineered in the U.S.A. and is backed by a factory warranty.

## EASY INSTALLATION

Installation is easy. No wire cutting, extra amps, or brackets are required – delivering a seamless installation process at your local dealership or at home.

Select Indian Motorcycle baggers and touring models will be available straight off the dealership floor with PowerBand Audio pre-installed at the factory. The new PowerBand Audio system is compatible with 2020-2024 models with seamless installation.

Riders can take their audio system up to 800-watts, including 200-watts in the upper fairing, 200-watts in the lower fairings, 200-watts in the saddlebags, and 200-watts in the touring trunk. Riders can also update their PowerBand Audio system in their 2020-2023 baggers and touring models with the Bass Boost Tune software upgrade at their local dealership. All 2024 and newer motorcycles will come standard with the Bass Boost Tune, which will automatically come alive once PowerBand Audio speakers are installed.





# ACCESSORIES

## BAGGER & TOURING STYLE

For 2024, Indian Motorcycle is debuting three new style accessories for Bagger & Touring models:

- Enhance the Indian Motorcycle authentic look with a new branded Console Cover to add a finishing stylish touch to an Indian Challenger or Indian Pursuit fuel tank console.
- Transform the Quick Release Trunk trim from chrome to black with the new Trunk Trim Kit.
- Continue the blacked-out look with the new Passenger Trunk Armrest Supports in black that offer stylish comfort for passengers ensuring they enjoy the ride from the back seat.

## FTR

For 2024, Indian Motorcycle adds to its tool collection and offers additional protection, including:

- The new FTR 36mm Rear Axle Wrench by CruzTools® providing the ability to loosen the rear axle nut on all FTR motorcycles combining functionality with convenience, without sacrificing portability or quality.
- The new FTR Front & Rear Axle Sliders by Gilles Tooling are engineered for the streets and the track to assist with protection during slides or drops while being backed by the reputation of Gilles Tooling.



## NEW COLORWAYS & COLOR-MATCHED ACCESSORIES

For 2024, Indian Motorcycle is unveiling an array of 16 brand-new colorways. Personalize style with color matched painted accessories straight from the factory, including:

- PowerBand Audio Saddlebag Lids for all Bagger & Touring models
- Hard Lower for Chieftain, Roadmaster, Indian Challenger and Indian Pursuit models.
- Low Profile Trunk and Touring Trunks
- Chief and Scout Fairing options







Women's Marl Script Henley Long Sleeve T-Shirt & Men's Heritage Denim Shirt



Men's Lambeth Jacket & Women's Alex Denim Jacket



Men's Ellingson Jacket & Women's Cleveland Suede Jacket



Men's Stripped Sleeve Jersey T-Shirt & Women's Watercolor Ringer T-Shirt



Men's Embroidered Ringer Sweatshirt & Women's Cotton Mesh Colorblock Long Sleeve T-Shirt



Men's Ellingson Glove



IMC Socks - Pack of 2



Icon Logo Mug



Colored IMC Logo Trucker Cap

# CLOTHING, GIFTS & GEAR

## FALL 2023 COLLECTION

With multiple fit options and a variety of styles, the Fall 2023 Collection delivers a wide range of clothing, gifts and gear that appeals to a diverse and passionate riding community.

The Fall 2023 Clothing & Gear Collection which features unique pieces that fit every style, includes a range of t-shirts, long sleeves, hoodies, riding jackets, hats and more for both men and women. Designed off the pioneering spirit that Indian Motorcycle was founded on this collection has pieces ranging from classic designs with bold branding, to blacked-out styling and modern designs.

The Fall 2023 Home & Gifts Collection is made to fit perfectly in any home or garage to display passion for the Indian Motorcycle brand. Ranging from branded mugs, bags, keychains, signs, patches and more, you can find anything that fits you or your loved one's style. Shop home & gifts now at [IndianMotorcycle.com/Outpost](https://IndianMotorcycle.com/Outpost)

## OWNERS COLLECTION

In addition to its Fall 2023 Collection, Indian Motorcycle is offering a full collection of owner inspired clothing and gifts. Driven by feedback from real owners, this collection features t-shirts for men & women, keychains, hats, trays, as well as owner-branded parking signs, flags and patches. To shop the Owners Collection visit [IndianMotorcycle.com/Outpost](https://IndianMotorcycle.com/Outpost).

All products can be shopped now at [IndianMotorcycle.com/Outpost](https://IndianMotorcycle.com/Outpost).

## OWNERS COLLECTION



Glove Metal Sign



Riders Wall Flag



Riders Leather Patch



Glove Keyring



# FTR LINEUP

PRESS IMAGES







Shown with accessories

# FTR SPECIFICATIONS

## ENGINE: LIQUID-COOLED V-TWIN (60 DEGREES)

Engine	DOHC, 4-valves per cylinder, graded buckets
Transmission	6-speed, constant mesh / foot shift
Battery	12 Volt, 12AH, 240CCA, maintenance free AGM
Bore x Stroke	4.016 in x 2.898 in / 102mm x 73.6mm
Charging System	35 amp max output
Clutch	Assist & slip, multi-plate
Compression Ratio	12.5 : 1
Cooling System	Liquid
Displacement	73 cu in / 1203 cc
Exhaust	2-into-1, catalyst in collector
Final Drive	Chain / 525HV3X / 116 Link
Fuel & Capacity	91 octane recommended, 3.4 gal / 13 L
Fuel System	Closed loop fuel injection / 60mm bore
Oil & Oil Capacity	SAE 15W60, 4.4 qts
Primary Drive	Gear drive wet clutch
Horsepower	120 hp at 7750 rpm
Peak Torque	87 ft-lbs at 6000 rpm

## SUSPENSION

Front Suspension	ZF Sachs® Fully Adjustable Inverted Telescopic Cartridge Fork, 43mm diameter, 120 mm travel
Rear Suspension	ZF Sachs® Fully Adjustable Piggyback IFP, 120 mm travel

## CHASSIS

Dry Weight	482 lbs (218 kg)
Ground Clearance	6.5 in (165 mm)
GVWR	948 lbs (430 kg)
Length	87.5 in (2223 mm)
Rake/Trail	25.3° / 3.9 in (100 mm)
Seat Height (Laden/Unladen)	30.7 in (780 mm) / 32.2 in (817 mm)
Wheelbase	60 in (1524mm)
Lean Angle	43°

## BRAKES

Brake System Type	Individual front and rear control
Front Braking System	Brembo® Dual 320mm t5 Rotor / 4 Piston Caliper
Rear Braking System	Brembo® Single 260mm t5 Rotor / 2 Piston Caliper

## WHEELS & TIRES

Front Tire	Metzeler® Sportec® 120/70ZR17 58W
Front Wheel	Cast 17 in x 3.5 in
Rear Tire	Metzeler® Sportec® 180/55ZR17 73W
Rear Wheel	Cast 17 in x 5.5 in

## STANDARD EQUIPMENT

ABS, Cruise Control

## COLORS & MSRP\*

Indy Red / Black \$13,499 USD / \$16,699 CAD

\*Does not include California emissions. Price subject to change.



Specifications subject to change.





# FTR SPORT SPECIFICATIONS

## ENGINE: LIQUID-COOLED V-TWIN (60 DEGREES)

Engine	DOHC, 4-valves per cylinder, graded buckets
Transmission	6-speed, constant mesh / foot shift
Battery	12 Volt, 12AH, 240CCA, maintenance free AGM
Bore x Stroke	4.016 in x 2.898 in / 102mm x 73.6mm
Charging System	35 amp max output
Clutch	Assist & slip, multi-plate
Compression Ratio	12.5 : 1
Cooling System	Liquid
Displacement	73 cu in / 1203 cc
Exhaust	2-into-1, catalyst in collector
Final Drive	Chain / 525HV3X / 116 Link
Fuel & Capacity	91 octane recommended, 3.4 gal / 13 L
Fuel System	Closed loop fuel injection / 60mm bore
Oil & Oil Capacity	SAE 15W60, 4.4 qts
Primary Drive	Gear drive wet clutch
Horsepower	120 hp at 7750 rpm
Peak Torque	87 ft-lbs at 6000 rpm

## SUSPENSION

Front Suspension	ZF Sachs® Fully Adjustable Inverted Telescopic Cartridge Fork, 43mm diameter, 120 mm travel
Rear Suspension	ZF Sachs® Fully Adjustable Piggyback IFP, 120 mm travel

## CHASSIS

Dry Weight	490 lbs (223 kg)
Ground Clearance	6.5 in (165 mm)
GVWR	948 lbs (430 kg)
Length	87.5 in (2223 mm)
Rake/Trail	25.3° / 3.9 in (100 mm)
Seat Height (Laden/Unladen)	30.7 in (780 mm) / 32.2 in (817 mm)
Wheelbase	60 in (1524mm)
Lean Angle	43°

## BRAKES

Brake System Type	Individual front and rear control
Front Braking System	Brembo® Dual 320mm t5 Rotor / 4 Piston Caliper
Rear Braking System	Brembo® Single 260mm t5 Rotor / 2 Piston Caliper

## WHEELS & TIRES

Front Tire	Metzeler® Sportec® 120/70ZR17 58W
Front Wheel	Cast 17 in x 3.5 in
Rear Tire	Metzeler® Sportec® 180/55ZR17 73W
Rear Wheel	Cast 17 in x 5.5 in

## STANDARD EQUIPMENT

4" Touchscreen powered by RIDE COMMAND with navigation and Bluetooth® Ride Modes (Rain, Standard, Sport)  
Lean Angle Sensitive ABS, Stability Control, Traction Control, Wheelie and Rear Lift Mitigation, USB Charge Port & Cruise Control

## COLORS & MSRP\*

Granite Gray / Blue	\$15,749 USD / \$18,999 CAD
Storm Gray / Black	\$15,999 USD / \$19,299 CAD

\*Does not include California emissions. Price subject to change.



Specifications subject to change.





# FTR R CARBON SPECIFICATIONS

## ENGINE: LIQUID-COOLED V-TWIN (60 DEGREES)

Engine	DOHC, 4-valves per cylinder, graded buckets
Transmission	6-speed, constant mesh / foot shift
Battery	12 Volt, 12AH, 240CCA, maintenance free AGM
Bore x Stroke	4.016 in x 2.898 in / 102mm x 73.6mm
Charging System	35 amp max output
Clutch	Assist & slip, multi-plate
Compression Ratio	12.5 : 1
Cooling System	Liquid
Displacement	73 cu in / 1203 cc
Exhaust	2-into-1, catalyst in collector
Final Drive	Chain / 525HV3X / 116 Link
Fuel & Capacity	91 octane recommended, 3.4 gal / 13 L
Fuel System	Closed loop fuel injection / 60mm bore
Oil & Oil Capacity	SAE 15W60, 4.4 qts
Primary Drive	Gear drive wet clutch
Horsepower	120 hp at 7750 rpm
Peak Torque	87 ft-lbs at 6000 rpm

## SUSPENSION

Front Suspension	Öhlins® Fully Adjustable Inverted Telescopic Cartridge Fork, 43mm diameter, 120 mm travel
Rear Suspension	Öhlins® Fully Adjustable Piggyback IFP, 120 mm travel

## CHASSIS

Dry Weight	486 lbs (221 kg)
Ground Clearance	6.5 in (165 mm)
GVWR	948 lbs (430 kg)
Length	87.5 in (2223 mm)
Rake/Trail	25.3° / 3.9 in (100 mm)
Seat Height (Laden/Unladen)	30.7 in (780 mm) / 32.2 in (817 mm)
Wheelbase	60 in (1524 mm)
Lean Angle	43°

## BRAKES

Brake System Type	Individual front and rear control
Front Braking System	Brembo® Dual 320mm t5 Rotor / 4 Piston Caliper
Rear Braking System	Brembo® Single 260mm t5 Rotor / 2 Piston Caliper

## WHEELS & TIRES

Front Tire	Metzeler® Sportec® 120/70ZR17 58W
Front Wheel	Cast 17 in x 3.5 in
Rear Tire	Metzeler® Sportec® 180/55ZR17 73W
Rear Wheel	Cast 17 in x 5.5 in

## STANDARD EQUIPMENT

4" Touchscreen powered by RIDE COMMAND with navigation and Bluetooth® Ride Modes (Rain, Standard, Sport)  
Lean Angle Sensitive ABS, Stability Control, Traction Control, Wheelie and Rear Lift Mitigation, USB Charge Port & Cruise Control

## COLOR & MSRP\*

Carbon Fiber \$17,249 USD / \$19,999 CAD

\*Does not include California emissions. Price subject to change.







# FTR x 100% R CARBON SPECIFICATIONS

## ENGINE: LIQUID-COOLED V-TWIN (60 DEGREES)

Engine	DOHC, 4-valves per cylinder, graded buckets
Transmission	6-speed, constant mesh / foot shift
Battery	12 Volt, 12AH, 240CCA, maintenance free AGM
Bore x Stroke	4.016 in x 2.898 in / 102mm x 73.6mm
Charging System	35 amp max output
Clutch	Assist & slip, multi-plate
Compression Ratio	12.5 : 1
Cooling System	Liquid
Displacement	73 cu in / 1203 cc
Exhaust	2-into-1, catalyst in collector
Final Drive	Chain / 525HV3X / 116 Link
Fuel & Capacity	91 octane recommended, 3.4 gal / 13 L
Fuel System	Closed loop fuel injection / 60mm bore
Oil & Oil Capacity	SAE 15W60, 4.4 qts
Primary Drive	Gear drive wet clutch
Horsepower	120 hp at 7750 rpm
Peak Torque	87 ft-lbs at 6000 rpm

## SUSPENSION

Front Suspension	Öhlins® Fully Adjustable Inverted Telescopic Cartridge Fork, 43mm diameter, 120 mm travel
Rear Suspension	Öhlins® Fully Adjustable Piggyback IFP, 120 mm travel

## CHASSIS

Dry Weight	486 lbs (221 kg)
Ground Clearance	6.5 in (165 mm)
GVWR	948 lbs (430 kg)
Length	87.5 in (2223 mm)
Rake/Trail	25.3° / 3.9 in (100 mm)
Seat Height (Laden/Unladen)	30.7 in (780 mm) / 32.2 in (817 mm)
Wheelbase	60 in (1524 mm)
Lean Angle	43°

## BRAKES

Brake System Type	Individual front and rear control
Front Braking System	Brembo® Dual 320mm t5 Rotor / 4 Piston Caliper
Rear Braking System	Brembo® Single 260mm t5 Rotor / 2 Piston Caliper

## WHEELS & TIRES

Front Tire	Metzeler® Sportec® 120/70ZR17 58W
Front Wheel	Cast 17 in x 3.5 in
Rear Tire	Metzeler® Sportec® 180/55ZR17 73W
Rear Wheel	Cast 17 in x 5.5 in

## STANDARD EQUIPMENT

4" Touchscreen powered by RIDE COMMAND with navigation and Bluetooth® Ride Modes (Rain, Standard, Sport)  
Lean Angle Sensitive ABS, Stability Control, Traction Control, Wheelie and Rear Lift Mitigation, USB Charge Port & Cruise Control

## COLOR & MSRP\*

Blue Candy Carbon Fiber    \$18,999 USD / \$21,999 CAD

\*Does not include California emissions. Price subject to change.





# SCOUT LINEUP

PRESS IMAGES



SHOWN WITH ACCESSORIES



SHOWN WITH ACCESSORIES



SHOWN WITH ACCESSORIES





Shown with accessories.

# SCOUT SIXTY SPECIFICATIONS

## ENGINE: LIQUID-COOLED V-TWIN (60 DEGREES)

Engine	DOHC, 4-valves per cylinder, semi-dry sump
Transmission	5-speed, constant mesh / foot shift
Battery	12 volts, 13 amp/hour, 245 CCA
Bore x Stroke	3.661" x 2.898" (93 mm x 73.6 mm)
Charging System	35 amp max output
Clutch	Wet, multi-plate
Compression Ratio	11 : 1
Cooling System	Liquid
Displacement	60 cu in / 999 cc
Exhaust	Split dual exhaust with cross-over
Final Drive	Belt drive, 141 tooth
Fuel & Capacity	91 octane recommended, 3.3 gal (12.5 ltr)
Fuel System	Electronic fuel injection, closed loop / 54 mm bore
Oil	SAE 15W60, 4.5 qts (4.3 ltr)
Primary Drive	Gear drive wet clutch
Horsepower	78 hp at 7200 rpm
Peak Torque	65 ft-lbs at 5800 rpm (88.8 Nm at 5800 rpm)

## SUSPENSION

Front Suspension	Telescopic fork, 41 mm diameter, 4.7 in (120 mm) travel
Rear Suspension	Dual shocks, 3.0 in (76 mm) travel, adjustable

## CHASSIS

Weight (As Shipped)	523 lbs (237 kg)
Ground Clearance	5.7 in (145 mm)
GVWR	988 lbs (449 kg)
Length	91.4 in (2322 mm)
Rake/Trail	29° / 4.7 in (120 mm)
Seat Height	25.6 in (650 mm)
Wheelbase	62 in (1575 mm)

## BRAKES

Brake System Type	Individual front and rear control
Front Braking System	Single 298 mm floating rotor with 2-piston calipers
Rear Braking System	Single 298 mm floating rotor with 1-piston caliper

## WHEELS & TIRES

Front Tire	Pirelli® Night Dragon 130/90B16 67H
Front Wheel	Cast Black 16" x 3.5" (406 mm x 89 mm)
Rear Tire	Pirelli® Night Dragon 150/80B16 77H
Rear Wheel	Cast Black 16" x 3.5" (406 mm x 89 mm)

## COLORS & MSRP\*

Black Metallic	\$11,749 USD / \$14,299 CAD
Black Metallic (ABS)	\$12,649 USD / \$15,199 CAD
Stealth Gray (ABS)	\$13,149 USD / \$15,699 CAD

\*Does not include California emissions. Price subject to change.



Specifications subject to change.





# SCOUT BOBBER SIXTY SPECIFICATIONS

## ENGINE: LIQUID-COOLED V-TWIN (60 DEGREES)

Engine	DOHC, 4-valves per cylinder, semi-dry sump
Transmission	5-speed, constant mesh / foot shift
Battery	12 volts, 13 amp/hour, 245 CCA
Bore x Stroke	3.661" x 2.898" (93 mm x 73.6 mm)
Charging System	35 amp max output
Clutch	Wet, multi-plate
Compression Ratio	11 : 1
Cooling System	Liquid
Displacement	60 cu in / 999 cc
Exhaust	Split dual exhaust with cross-over
Final Drive	Belt drive, 141 tooth
Fuel & Capacity	91 octane recommended, 3.3 gal (12.5 ltr)
Fuel System	Electronic fuel injection, closed loop / 54 mm bore
Oil	SAE 15W60, 4.5 qts (4.3 ltr)
Primary Drive	Gear drive wet clutch
Horsepower	78 hp at 7200 rpm
Peak Torque	65 ft-lbs at 5800 rpm (88.8 Nm at 5800 rpm)

## SUSPENSION

Front Suspension	Telescopic fork, 41 mm diameter, 4.7 in (120 mm) travel
Rear Suspension	Dual shocks, 2.0 in (51 mm) travel, adjustable

## CHASSIS

Weight (As Shipped)	528 lbs (239 kg)
Ground Clearance	5.1 in (129 mm)
GVWR	988 lbs (449 kg)
Length	87.5 in (2223 mm)
Rake/Trail	29° / 4.7 in (120 mm)
Seat Height	25.6 in (649 mm)
Wheelbase	62 in (1576 mm)

## BRAKES

Brake System Type	Individual front and rear control
Front Braking System	Single 298 mm floating rotor with 2-piston calipers
Rear Braking System	Single 298 mm floating rotor with 1-piston caliper

## WHEELS & TIRES

Front Tire	Pirelli® Night Dragon 130/90B16 67H
Front Wheel	Cast Black 16" x 3.5" (406 mm x 89 mm)
Rear Tire	Pirelli® Night Dragon 150/80B16 77H
Rear Wheel	Cast Black 16" x 3.5" (406 mm x 89 mm)

## COLORS & MSRP\*

Black Metallic	\$10,749 USD / \$12,999 CAD
Black Metallic (ABS)	\$11,649 USD / \$13,899 CAD
Black Smoke (ABS)	\$12,149 USD / \$14,399 CAD
Sunset Red Metallic (ABS)	\$12,149 USD / \$14,399 CAD
Ghost White (ABS)	\$12,149 USD / \$14,399 CAD

\*Does not include California emissions. Price subject to change.



Specifications subject to change.





# SCOUT ROGUE SIXTY SPECIFICATIONS

## ENGINE: LIQUID-COOLED V-TWIN (60 DEGREES)

Engine	DOHC, 4-valves per cylinder, semi-dry sump
Transmission	5-speed, constant mesh / foot shift
Battery	12 volts, 13 amp/hour, 245 CCA
Bore x Stroke	3.661" x 2.898" (93 mm x 73.6 mm)
Charging System	35 amp max output
Clutch	Wet, multi-plate
Compression Ratio	11 : 1
Cooling System	Liquid
Displacement	60 cu in / 999 cc
Exhaust	Split dual exhaust with cross-over
Final Drive	Belt drive, 141 tooth
Fuel & Capacity	91 octane recommended, 3.3 gal (12.5 ltr)
Fuel System	Electronic fuel injection, closed loop / 54 mm bore
Oil	SAE 15W60, 4.5 qts (4.3 ltr)
Primary Drive	Gear drive wet clutch
Horsepower	78 hp at 7200 rpm
Peak Torque	65 ft-lbs at 5800 rpm (88.8 Nm at 5800 rpm)

## SUSPENSION

Front Suspension	Telescopic fork, 41 mm diameter, 4.7 in (120 mm) travel
Rear Suspension	Dual shocks, 2.0 in (51 mm) travel, adjustable

## CHASSIS

Weight (As Shipped)	520 lbs (236 kg)
Ground Clearance	5.1 in (129 mm)
GVWR	988 lbs (449 kg)
Length	87.5 in (2223 mm)
Rake/Trail	29° / 4.7 in (120 mm)
Seat Height	25.6 in (649 mm)
Wheelbase	62 in (1576 mm)

## BRAKES

Brake System Type	Individual front and rear control
Front Braking System	Single 298 mm floating rotor with 2-piston calipers
Rear Braking System	Single 298 mm floating rotor with 1-piston caliper

## WHEELS & TIRES

Front Tire	Metzeler® Cruisetec® 130/60B19 61H
Front Wheel	Cast Black 19" x 3.5"
Rear Tire	Metzeler® Cruisetec® 150/80R-16
Rear Wheel	Cast Black 16" x 3.5"

## COLORS & MSRP\*

Black Metallic	\$11,249 USD / \$13,699 CAD
Black Metallic (ABS)	\$12,149 USD / \$14,599 CAD
Storm Gray (ABS)	\$12,649 USD / \$15,099 CAD
Spirit Blue Smoke (ABS)	\$12,649 USD / \$15,099 CAD

\*Does not include California emissions. Price subject to change.







Shown with accessories

# SCOUT SPECIFICATIONS

## ENGINE: LIQUID-COOLED V-TWIN (60 DEGREES)

Engine	DOHC, 4-valves per cylinder, semi-dry sump
Transmission	6-speed, constant mesh / foot shift
Battery	12 volts, 13 amp/hour, 245 CCA
Bore x Stroke	3.898" x 2.898" (99 mm x 74 mm)
Charging System	35 amp max output
Clutch	Wet, multi-plate
Compression Ratio	10.7:1
Cooling System	Liquid
Displacement	69 cu in / 1133 cc
Exhaust	Split dual exhaust with cross-over
Final Drive	Belt drive, 141 tooth
Fuel & Capacity	91 octane recommended, 3.3 gal (12.5 ltr)
Fuel System	Electronic fuel injection, closed loop / 60 mm bore
Oil	SAE 15W60, 4.5 qts (4.3 ltr)
Primary Drive	Gear drive wet clutch
Horsepower	100 hp at 8100 rpm
Peak Torque	72 ft-lbs at 6000rpm (98 Nm @ 6000 RPM)

## SUSPENSION

Front Suspension	Telescopic fork, 41 mm diameter, 4.7 in (120 mm) travel
Rear Suspension	Dual shocks, 3.0 in (76 mm) travel, adjustable

## CHASSIS

Weight (As Shipped)	541 lbs (245 kg)
Ground Clearance	5.7 in (145 mm)
GVWR	988 lbs (449 kg)
Length	91.5 in (2324 mm)
Rake/Trail	29° / 4.7 in (120 mm)
Seat Height	25.6 in (650 mm)
Wheelbase	62 in (1575 mm)

## BRAKES

Brake System Type	Individual front and rear control
Front Braking System	Single 298 mm floating rotor with 2-piston calipers
Rear Braking System	Single 298 mm floating rotor with 1-piston caliper

## WHEELS & TIRES

Front Tire	Pirelli® Night Dragon 130/90B16 67H
Front Wheel	Contrast Cut 16" x 3.5" (406 mm x 89 mm)
Rear Tire	Pirelli® Night Dragon 150/80B16 77H
Rear Wheel	Contrast Cut 16" x 3.5" (406 mm x 89 mm)

## COLORS & MSRP\*

Black Metallic	\$13,249 USD / \$16,499 CAD
Black Metallic (ABS)	\$14,149 USD / \$17,399 CAD
Silver Quartz Metallic (ABS)	\$14,649 USD / \$17,899 CAD
Maroon Metallic (ABS)	\$14,649 USD / \$17,899 CAD
Spirit Blue Metallic / Black Metallic (ABS)	\$15,149 USD / \$18,399 CAD
Black Metallic with Graphics (ABS)	\$15,649 USD / \$18,899 CAD
Copper Metallic / Black Metallic (ABS)	\$15,649 USD / \$18,899 CAD

\*Does not include California emissions. Price subject to change.



Specifications subject to change.





# SCOUT BOBBER SPECIFICATIONS

## ENGINE: LIQUID-COOLED V-TWIN (60 DEGREES)

Engine	DOHC, 4-valves per cylinder, semi-dry sump
Transmission	6-speed, constant mesh / foot shift
Battery	12 volts, 13 amp/hour, 245 CCA
Bore x Stroke	3.898" x 2.898" (99 mm x 74 mm)
Charging System	35 amp max output
Clutch	Wet, multi-plate
Compression Ratio	10.7:1
Cooling System	Liquid
Displacement	69 cu in / 1133 cc
Exhaust	Split dual exhaust with cross-over
Final Drive	Belt drive, 141 tooth
Fuel & Capacity	91 octane recommended, 3.3 gal (12.5 ltr)
Fuel System	Electronic fuel injection, closed loop / 60 mm bore
Oil	SAE 15W60, 4.5 qts (4.3 ltr)
Primary Drive	Gear drive wet clutch
Horsepower	100 hp at 8100 rpm
Peak Torque	72 ft-lbs at 6000rpm (98 Nm @ 6000 RPM)

## SUSPENSION

Front Suspension	Telescopic fork, 41 mm diameter, 4.7 in (120 mm) travel
Rear Suspension	Dual shocks, 2.0 in (51 mm) travel

## CHASSIS

Weight (As Shipped)	533 lbs (242 kg)
Ground Clearance	5.1 in (130 mm)
GVWR	988 lbs (449 kg)
Length	87.5 in (2223 mm)
Rake/Trail	29° / 4.7 in (120 mm)
Seat Height	25.6 in (649 mm)
Wheelbase	62 in (1575 mm)

## BRAKES

Brake System Type	Individual front and rear control
Front Braking System	Single 298 mm floating rotor with 2-piston calipers
Rear Braking System	Single 298 mm floating rotor with 1-piston caliper

## WHEELS & TIRES

Front Tire	Pirelli® MT60RS, 130/90B16 67H
Front Wheel	Cast Black 16" x 3.5" (406 mm x 89 mm)
Rear Tire	Pirelli® MT60RS, 150/80B16 77H
Rear Wheel	Cast Black 16" x 3.5" (406 mm x 89 mm)

## COLORS & MSRP\*

Black Metallic	\$12,249 USD / \$15,499 CAD
Black Metallic (ABS)	\$13,149 USD / \$16,399 CAD
Black Smoke (ABS)	\$13,649 USD / \$16,899 CAD
Sunset Red Smoke (ABS)	\$13,649 USD / \$16,899 CAD
Springfield Blue Metallic (ABS)	\$13,649 USD / \$16,899 CAD
Silver Quartz Smoke (ABS)	\$14,149 USD / \$17,399 CAD
Sagebrush Smoke (ABS)	\$14,149 USD / \$17,399 CAD
Stealth Gray Azure Crystal (ABS)	\$14,649 USD / \$17,899 CAD
Copper Smoke (ABS)	\$14,649 USD / \$17,899 CAD
Indy Red (ABS)	\$14,649 USD / \$17,899 CAD

\*Does not include California emissions. Price subject to change.



Specifications subject to change.





# SCOUT BOBBER TWENTY SPECIFICATIONS

## ENGINE: LIQUID-COOLED V-TWIN (60 DEGREES)

Engine	DOHC, 4-valves per cylinder, semi-dry sump
Transmission	6-speed, constant mesh / foot shift
Battery	12 volts, 13 amp/hour, 245 CCA
Bore x Stroke	3.898" x 2.898" (99 mm x 74 mm)
Charging System	35 amp max output
Clutch	Wet, multi-plate
Compression Ratio	10.7:1
Cooling System	Liquid
Displacement	69 cu in / 1133 cc
Exhaust	Split dual exhaust with cross-over
Final Drive	Belt drive, 141 tooth
Fuel & Capacity	91 octane recommended, 3.3 gal (12.5 ltr)
Fuel System	Electronic fuel injection, closed loop / 60 mm bore
Oil	SAE 15W60, 4.5 qts (4.3 ltr)
Primary Drive	Gear drive wet clutch
Horsepower	100 hp at 8100 rpm
Peak Torque	72 ft-lbs at 6000rpm (98 Nm @ 6000 RPM)

## SUSPENSION

Front Suspension	Telescopic fork, 41 mm diameter, 4.7 in (120 mm) travel
Rear Suspension	Dual shocks, 2.0 in (51 mm) travel

## CHASSIS

Weight (As Shipped)	547 lbs (248 kg)
Ground Clearance	5.1 in (130 mm)
GVWR	988 lbs (449 kg)
Length	87.5 in (2222 mm)
Rake/Trail	29° / 4.7 in (120 mm)
Seat Height	25.6 in (649 mm)
Wheelbase	62 in (1575 mm)

## BRAKES

Brake System Type	Individual front and rear control
Front Braking System	Single 298 mm floating rotor with 2-piston calipers
Rear Braking System	Single 298 mm floating rotor with 1-piston caliper

## WHEELS & TIRES

Front Tire	Pirelli® MT60RS, 130/90B16 67H
Front Wheel	Black Wire 16" x 3.5" (406 mm x 89 mm)
Rear Tire	Pirelli® MT60RS, 150/80B16 77H
Rear Wheel	Black Wire 16" x 3.5" (406 mm x 89 mm)

## COLORS & MSRP\*

Black Metallic	\$13,249 USD / \$16,499 CAD
Black Metallic (ABS)	\$14,149 USD / \$17,399 CAD
Silver Quartz Smoke (ABS)	\$14,649 USD / \$17,899 CAD
Maroon Metallic (ABS)	\$14,649 USD / \$17,899 CAD

\*Does not include California emissions. Price subject to change.



Specifications subject to change.





# SCOUT ROGUE SPECIFICATIONS

## ENGINE: LIQUID-COOLED V-TWIN (60 DEGREES)

Engine	DOHC, 4-valves per cylinder, semi-dry sump
Transmission	6-speed, constant mesh / foot shift
Battery	12 volts, 13 amp/hour, 245 CCA
Bore x Stroke	3.898" x 2.898" (99 mm x 74 mm)
Charging System	35 amp max output
Clutch	Wet, multi-plate
Compression Ratio	10.7:1
Cooling System	Liquid
Displacement	69 cu in / 1133 cc
Exhaust	Split dual exhaust with cross-over
Final Drive	Belt drive, 141 tooth
Fuel & Capacity	91 octane recommended, 3.3 gal (12.5 ltr)
Fuel System	Electronic fuel injection, closed loop / 60 mm bore
Oil	SAE 15W60, 4.5 qts (4.3 ltr)
Primary Drive	Gear drive wet clutch
Horsepower	100 hp at 8100 rpm
Peak Torque	72 ft-lbs at 6000rpm (98 Nm @ 6000 RPM)

## SUSPENSION

Front Suspension	Telescopic fork, 41 mm diameter, 4.7 in (120 mm) travel
Rear Suspension	Dual shocks, 2.0 in (51 mm) travel, adjustable

## CHASSIS

Weight (As Shipped)	525 lbs (238 kg)
Ground Clearance	5.1 in (129 mm)
GVWR	988 lbs (449 kg)
Length	87.5 in (2223 mm)
Rake/Trail	29° / 4.7 in (120 mm)
Seat Height	25.6 in (649 mm)
Wheelbase	62 in (1575 mm)

## BRAKES

Brake System Type	Individual front and rear control
Front Braking System	Single 298 mm floating rotor with 2-piston calipers
Rear Braking System	Single 298 mm floating rotor with 1-piston caliper

## WHEELS & TIRES

Front Tire	Metzeler® Cruisetec® 130/60B19 61H
Front Wheel	Cast Black 19" x 3.5"
Rear Tire	Metzeler® Cruisetec® 150/80R-16
Rear Wheel	Cast Black 16" x 3.5"

## COLORS & MSRP\*

Black Metallic	\$12,749 USD / \$15,999 CAD
Black Metallic (ABS)	\$13,649 USD / \$16,899 CAD
Black Smoke (ABS)	\$14,149 USD / \$17,399 CAD
Storm Blue (ABS)	\$14,149 USD / \$17,399 CAD
Sagebrush Smoke (ABS)	\$14,149 USD / \$17,399 CAD
Stealth Gray with Graphics (ABS)	\$14,649 USD / \$17,899 CAD
Black Azure Crystal (ABS)	\$15,149 USD / \$18,499 CAD
Copper Metallic (ABS)	\$15,149 USD / \$18,499 CAD

\*Does not include California emissions. Price subject to change.



Specifications subject to change.



# CHIEF LINEUP

PRESS IMAGES







# CHIEF SPECIFICATIONS

## ENGINE: THUNDERSTROKE 111

Engine Type	Air-Cooled 49° V-twin with Rear Cylinder Deactivation
Displacement	111 cu in / 1811 cc
Bore x Stroke	3.976 in x 4.449 in (101 mm x 113 mm)
Compression Ratio	9.5 : 1
Lubrication System	Semi-Dry Sump
Fuel System	Closed loop/54 mm bore single throttle body
Fuel Capacity	4 gal (15.1 ltr) not including reserve
Exhaust	Dual exhaust with crossover
Peak Torque	108 ft-lbs at 3200 rpm (146 Nm at 3200 rpm)
Primary Drive	Gear drive wet clutch
Transmission	6-speed/constant mesh
Clutch	Wet, multi-plate
Final Drive	Belt drive, 146 tooth
Battery	12 volts / 18 amp/hour, 310 CCA with quick connect charge port

## CHASSIS

Chassis Type	Steel tube weldment with cast aluminum rear sub-frame
Wheelbase	64 in (1626 mm)
Rake/Trail	29° / 5.2 in (131.5 mm)
Lean Angle (soft)	28.5°
Seat Height	26 in (662 mm)
Weight (As Shipped)	647 lbs (294 kg)
Ground Clearance	4.9 in (125 mm)
GVWR	1,160 lbs (526 kg)
Length	90 in (2286 mm)

## SUSPENSION

Front Suspension	Telescopic fork, 46 mm diameter, 5.2 in (132 mm) travel
Rear Suspension	Dual gas-charged monotube shocks with adjustable preload, 3.0 in (75mm) travel

## BRAKES

Brake System Type	Individual front and rear control with optional ABS
Front Braking System	Single 4 piston caliper / 300mm Semi-Floating Rotor
Rear Braking System	Single 2 piston caliper / 300mm Floating Rotor

## WHEELS & TIRES

Front Tire	Pirelli® Night Dragon 130/60B19 61H
Front Wheel	Cast Black 19" x 3.5"
Rear Tire	Pirelli® Night Dragon 180/65 B16 81H
Rear Wheel	Cast Black 16" x 5"

## STANDARD FEATURES

Lighting	LED Headlights, LED stop/turn/taillights
Gauges	Analog Speedometer featuring a Digital Tachometer & Fuel Level
Controls	Cruise Control, 3 Selectable Ride Modes, Keyless Ignition

## COLORS & MSRP\*

Black Metallic	\$14,499 USD / \$17,599 CAD
Titanium Metallic	\$15,499 USD / \$18,299 CAD
Maroon Metallic Smoke	\$15,499 USD / \$18,299 CAD
Black Metallic (ABS)	\$15,949 USD / \$18,599 CAD
Titanium Metallic (ABS)	\$16,449 USD / \$19,299 CAD
Maroon Metallic Smoke (ABS)	\$16,449 USD / \$19,299 CAD

\*Does not include California emissions. Price subject to change.



Specifications subject to change.





# CHIEF DARK HORSE SPECIFICATIONS

## ENGINE: THUNDERSTROKE 116

Engine Type	Air-Cooled 49° V-twin with Rear Cylinder Deactivation
Displacement	116 cu in / 1890 cc
Bore x Stroke	4.063 in x 4.449 in (103.2mm x 113mm)
Compression Ratio	11.0 : 1
Lubrication System	Semi-Dry Sump
Fuel System	Closed loop/54 mm bore single throttle body
Fuel Capacity	4 gal (15.1 ltr) not including reserve
Exhaust	Dual exhaust with crossover
Peak Torque	120 ft-lbs at 2900 rpm (162 Nm at 2900 rpm)
Primary Drive	Gear drive wet clutch
Transmission	6-speed/constant mesh
Clutch	Wet, multi-plate
Final Drive	Belt drive, 146 tooth
Battery	12 volts / 18 amp/hour, 310 CCA with quick connect charge port

## CHASSIS

Chassis Type	Steel tube weldment with cast aluminum rear sub-frame
Wheelbase	64 in (1626 mm)
Rake/Trail	29° / 5.2 in (131.5 mm)
Lean Angle (soft)	28.5°
Seat Height	26 in (662 mm)
Weight (As Shipped)	647 lbs (294 kg)
Ground Clearance	4.9 in (125 mm)
GVWR	1,160 lbs (526 kg)
Length	90 in (2286 mm)

## SUSPENSION

Front Suspension	Telescopic fork, 46 mm diameter, 5.2 in (132 mm) travel
Rear Suspension	Dual gas-charged monotube shocks with adjustable preload, 3.0 in (75mm) travel

## BRAKES

Brake System Type	Individual front and rear control with standard ABS
Front Braking System	Single 4 piston caliper / 300mm Semi-Floating Rotor
Rear Braking System	Single 2 piston caliper / 300mm Floating Rotor

## WHEELS & TIRES

Front Tire	Pirelli® Night Dragon 130/60B19 61H
Front Wheel	Machine Highlighted Cast Black 19" x 3.5"
Rear Tire	Pirelli® Night Dragon 180/65 B16 81H
Rear Wheel	Machine Highlighted Cast Black 16" x 5"

## STANDARD FEATURES

Lighting	LED Headlights, LED stop/turn/taillights
Gauges	4 Inch Touchscreen Powered By RIDE COMMAND with Navigation and Bluetooth®
Controls	Cruise Control, 3 Selectable Ride Modes, Keyless Ignition, ABS Standard, USB Charge Port

## COLORS & MSRP\*

Black Smoke	\$18,499 USD / \$21,699 CAD
Springfield Blue Smoke	\$18,999 USD / \$22,399 CAD
Sunset Red Metallic	\$18,999 USD / \$22,399 CAD
Sandstone Smoke	\$19,499 USD / \$23,099 CAD

\*Does not include California emissions. Price subject to change.



Specifications subject to change.





# CHIEF BOBBER SPECIFICATIONS

## ENGINE: THUNDERSTROKE 111

Engine Type	Air-Cooled 49° V-twin with Rear Cylinder Deactivation
Displacement	111 cu in / 1811 cc
Bore x Stroke	3.976 in x 4.449 in (101 mm x 113 mm)
Compression Ratio	9.5 : 1
Lubrication System	Semi-Dry Sump
Fuel System	Closed loop/54 mm bore single throttle body
Fuel Capacity	4 gal (15.1 ltr) not including reserve
Exhaust	Dual exhaust with crossover
Peak Torque	108 ft-lbs at 3200 rpm (146 Nm at 3200 rpm)
Primary Drive	Gear drive wet clutch
Transmission	6-speed/constant mesh
Clutch	Wet, multi-plate
Final Drive	Belt drive, 146 tooth
Battery	12 volts / 18 amp/hour, 310 CCA with quick connect charge port

## CHASSIS

Chassis Type	Steel tube weldment with cast aluminum rear sub-frame
Wheelbase	64 in (1626 mm)
Rake/Trail	29° / 5.2 in (131.5 mm)
Lean Angle (soft)	28.5°
Seat Height	26 in (662 mm)
Weight (As Shipped)	670 lbs (304 kg)
Ground Clearance	4.9 in (125 mm)
GVWR	1,160 lbs (526 kg)
Length	90 in (2286 mm)

## SUSPENSION

Front Suspension	Telescopic fork with covers, 46 mm diameter, 5.2 in (132 mm) travel
Rear Suspension	Shrouded dual gas-charged monotube shocks with adjustable preload, 3.0 in (75mm) travel

## BRAKES

Brake System Type	Individual front and rear control with optional ABS
Front Braking System	Single 4 piston caliper / 300mm Semi-Floating Rotor
Rear Braking System	Single 2 piston caliper / 300mm Floating Rotor

## WHEELS & TIRES

Front Tire	Pirelli® Night Dragon 130/90B16 67H
Front Wheel	Black Wire 16" x 3"
Rear Tire	Pirelli® Night Dragon 180/65 B16 81H
Rear Wheel	Black Wire 16" x 5"

## STANDARD FEATURES

Lighting	LED Headlights, LED stop/turn/taillights
Gauges	Analog Speedometer featuring a Digital Tachometer & Fuel Level
Controls	Cruise Control, 3 Selectable Ride Modes, Keyless Ignition

## COLORS & MSRP\*

Black Metallic	\$16,499 USD / \$19,599 CAD
Ghost White Metallic Smoke	\$16,999 USD / \$20,299 CAD
Black Metallic (ABS)	\$17,449 USD / \$20,599 CAD
Ghost White Metallic Smoke (ABS)	\$17,949 USD / \$21,299 CAD

\*Does not include California emissions. Price subject to change.



Specifications subject to change.





# CHIEF BOBBER DARK HORSE SPECIFICATIONS

## ENGINE: THUNDERSTROKE 116

Engine Type	Air-Cooled 49° V-twin with Rear Cylinder Deactivation
Displacement	116 cu in / 1890 cc
Bore x Stroke	4.063 in x 4.449 in (103.2mm x 113mm)
Compression Ratio	11.0 : 1
Lubrication System	Semi-Dry Sump
Fuel System	Closed loop/54 mm bore single throttle body
Fuel Capacity	4 gal (15.1 ltr) not including reserve
Exhaust	Dual exhaust with crossover
Peak Torque	120 ft-lbs at 2900 rpm (162 Nm at 2900 rpm)
Primary Drive	Gear drive wet clutch
Transmission	6-speed/constant mesh
Clutch	Wet, multi-plate
Final Drive	Belt drive, 146 tooth
Battery	12 volts / 18 amp/hour, 310 CCA with quick connect charge port

## CHASSIS

Chassis Type	Steel tube weldment with cast aluminum rear sub-frame
Wheelbase	64 in (1626 mm)
Rake/Trail	29° / 5.2 in (131.5 mm)
Lean Angle (soft)	28.5°
Seat Height	26 in (662 mm)
Weight (As Shipped)	670 lbs (304 kg)
Ground Clearance	4.9 in (125 mm)
GVWR	1,160 lbs (526 kg)
Length	90 in (2286 mm)

## SUSPENSION

Front Suspension	Telescopic fork with covers, 46 mm diameter, 5.2 in (132 mm) travel
Rear Suspension	Shrouded dual gas-charged monotube shocks with adjustable preload, 3.0 in (75mm) travel

## BRAKES

Brake System Type	Individual front and rear control with standard ABS
Front Braking System	Single 4 piston caliper / 300mm Semi-Floating Rotor
Rear Braking System	Single 2 piston caliper / 300mm Floating Rotor

## WHEELS & TIRES

Front Tire	Pirelli® Night Dragon 130/90B16 67H
Front Wheel	Black Wire 16" x 3"
Rear Tire	Pirelli® Night Dragon 180/65 B16 81H
Rear Wheel	Black Wire 16" x 5"

## STANDARD FEATURES

Lighting	LED Headlights, LED stop/turn/taillights
Gauges	4 Inch Touchscreen Powered By RIDE COMMAND with Navigation and Bluetooth®
Controls	Cruise Control, 3 Selectable Ride Modes, Keyless Ignition, ABS Standard, USB Charge Port

## COLORS & MSRP\*

Black Smoke	\$19,999 USD / \$23,699 CAD
Storm Gray	\$20,499 USD / \$24,399 CAD
Sunset Red Smoke	\$20,499 USD / \$24,399 CAD
Copper Metallic Pearl	\$20,999 USD / \$25,099 CAD

\*Does not include California emissions. Price subject to change.



Specifications subject to change.





# SUPER CHIEF SPECIFICATIONS

## ENGINE: THUNDERSTROKE 111

Engine Type	Air-Cooled 49° V-twin with Rear Cylinder Deactivation
Displacement	111 cu in / 1811 cc
Bore x Stroke	3.976 in x 4.449 in (101 mm x 113 mm)
Compression Ratio	9.5 : 1
Lubrication System	Semi-Dry Sump
Fuel System	Closed loop/54 mm bore single throttle body
Fuel Capacity	4 gal (15.1 ltr) not including reserve
Exhaust	Dual exhaust with crossover
Peak Torque	108 ft-lbs at 3200 rpm (146 Nm at 3200 rpm)
Primary Drive	Gear drive wet clutch
Transmission	6-speed/constant mesh
Clutch	Wet, multi-plate
Final Drive	Belt drive, 146 tooth
Battery	12 volts / 18 amp/hour, 310 CCA with quick connect charge port

## CHASSIS

Chassis Type	Steel tube weldment with cast aluminum rear sub-frame
Wheelbase	64 in (1626 mm)
Rake/Trail	29° / 5.2 in (131.5 mm)
Lean Angle (soft)	28.5°
Seat Height	26.2 in (665 mm)
Weight (As Shipped)	714 lbs (324 kg)
Ground Clearance	4.9 in (125 mm)
GVWR	1,160 lbs (526 kg)
Length	90 in (2286 mm)
Storage Capacity	9.7 gal (36.6 ltr)

## SUSPENSION

Front Suspension	Telescopic fork with covers, 46 mm diameter, 5.2 in (132 mm) travel
Rear Suspension	Dual gas-charged monotube shocks with adjustable preload, 3.0 in (75mm) travel

## BRAKES

Brake System Type	Individual front and rear control with optional ABS
Front Braking System	Single 4 piston caliper / 300mm Semi-Floating Rotor
Rear Braking System	Single 2 piston caliper / 300mm Floating Rotor

## WHEELS & TIRES

Front Tire	Pirelli® Night Dragon 130/90B16 67H
Front Wheel	Black Wire 16" x 3"
Rear Tire	Pirelli® Night Dragon 180/65 B16 81H
Rear Wheel	Black Wire 16" x 5"

## STANDARD FEATURES

Lighting	LED Headlights, LED stop/turn/taillights
Gauges	Analog Speedometer featuring a Digital Tachometer & Fuel Level
Controls	Cruise Control, 3 Selectable Ride Modes, Keyless Ignition

## COLORS & MSRP\*

Black Metallic	\$18,999 USD / \$22,599 CAD
Black Metallic (ABS)	\$19,949 USD / \$23,599 CAD

\*Does not include California emissions. Price subject to change.



Specifications subject to change.





# SUPER CHIEF LIMITED SPECIFICATIONS

## ENGINE: THUNDERSTROKE 116

Engine Type	Air-Cooled 49° V-twin with Rear Cylinder Deactivation
Displacement	116 cu in / 1890 cc
Bore x Stroke	4.063 in x 4.449 in (103.2mm x 113mm)
Compression Ratio	11.0 : 1
Lubrication System	Semi-Dry Sump
Fuel System	Closed loop/54 mm bore single throttle body
Fuel Capacity	4 gal (15.1 ltr) not including reserve
Exhaust	Dual exhaust with crossover
Peak Torque	120 ft-lbs at 2900 rpm (162 Nm at 2900 rpm)
Primary Drive	Gear drive wet clutch
Transmission	6-speed/constant mesh
Clutch	Wet, multi-plate
Final Drive	Belt drive, 146 tooth
Battery	12 volts / 18 amp/hour, 310 CCA with quick connect charge port

## CHASSIS

Chassis Type	Steel tube weldment with cast aluminum rear sub-frame
Wheelbase	64 in (1626 mm)
Rake/Trail	29° / 5.2 in (131.5 mm)
Lean Angle (soft)	28.5°
Seat Height	26.2 in (665 mm)
Weight (As Shipped)	714 lbs (324 kg)
Ground Clearance	4.9 in (125 mm)
GVWR	1,160 lbs (526 kg)
Length	90 in (2286 mm)
Storage Capacity	9.7 gal (36.6 ltr)

## SUSPENSION

Front Suspension	Telescopic fork with covers, 46 mm diameter, 5.2 in (132 mm) travel
Rear Suspension	Dual gas-charged monotube shocks with adjustable preload, 3.0 in (75mm) travel

## BRAKES

Brake System Type	Individual front and rear control with optional ABS
Front Braking System	Single 4 piston caliper / 300mm Semi-Floating Rotor
Rear Braking System	Single 2 piston caliper / 300mm Floating Rotor

## WHEELS & TIRES

Front Tire	Pirelli® Night Dragon 130/90B16 67H
Front Wheel	Black Wire 16" x 3"
Rear Tire	Pirelli® Night Dragon 180/65 B16 81H
Rear Wheel	Black Wire 16" x 5"

## STANDARD FEATURES

Lighting	LED Headlights, LED stop/turn/taillights
Gauges	4 Inch Touchscreen Powered By RIDE COMMAND with Navigation and Bluetooth®
Controls	Cruise Control, 3 Selectable Ride Modes, Keyless Ignition

## COLORS & MSRP\*

Black Metallic	\$21,999 USD / \$26,199 CAD
Spirit Blue Metallic	\$22,499 USD / \$26,899 CAD
Ghost White Metallic	\$22,499 USD / \$26,899 CAD
Maroon Metallic Pearl	\$22,999 USD / \$27,599 CAD

\*Does not include California emissions. Price subject to change.



Specifications subject to change.





# SPORT CHIEF SPECIFICATIONS

## ENGINE: THUNDERSTROKE 116

Engine Type	Air-Cooled 49° V-twin with Rear Cylinder Deactivation
Displacement	116 cu in / 1890 cc
Bore x Stroke	4.063 in x 4.449 in (103.2mm x 113mm)
Compression Ratio	11.0 : 1
Lubrication System	Semi-Dry Sump
Fuel System	Closed loop/54 mm bore single throttle body
Fuel Capacity	4 gal (15.1 ltr) not including reserve
Exhaust	Dual exhaust with crossover
Peak Torque	120 ft-lbs at 2900 rpm (162 Nm at 2900 rpm)
Primary Drive	Gear drive wet clutch
Transmission	6-speed/constant mesh
Clutch	Wet, multi-plate
Final Drive	Belt drive, 146 tooth
Battery	12 volts / 18 amp/hour, 310 CCA with quick connect charge port

## CHASSIS

Chassis Type	Steel tube weldment with cast aluminum rear sub-frame
Wheelbase	64.6 in (1640 mm)
Rake/Trail	28° / 4.4 in (111 mm)
Lean Angle (soft)	29.5°
Seat Height	27 in (686 mm)
Weight (As Shipped)	665 lbs (302 kg)
Ground Clearance	5.9 in (149 mm)
GVWR	1,160 lbs (526 kg)
Length	90.6 in (2,301 mm)

## SUSPENSION

Front Suspension	KYB® Inverted Telescopic Fork, 43 mm diameter, 5.1 in (130 mm) travel
Rear Suspension	Dual FOX® Piggyback Shocks with adjustable preload, 4.0 in (100 mm) travel

## BRAKES

Brake System Type	Brembo® Individual front & rear control with standard ABS
Front Braking System	Dual 4 piston caliper / 320mm semi-floating rotor
Rear Braking System	Single 2 piston caliper / 300mm floating rotor

## WHEELS & TIRES

Front Tire	Pirelli® Night Dragon 130/60B19 61H
Front Wheel	Sport Cast Black 19" x 3.5"
Rear Tire	Pirelli® Night Dragon 180/65 B16 81H
Rear Wheel	Sport Cast Black 16" x 5"

## STANDARD FEATURES

Lighting	LED Headlight, LED stop/turn/taillights
Gauges	4 Inch Touchscreen Powered By RIDE COMMAND with Navigation and Bluetooth®
Controls	Cruise Control, 3 Selectable Ride Modes, Keyless Ignition, ABS Standard, USB Charge Port

## COLORS & MSRP\*

Black Smoke	\$19,999 USD / \$24,249 CAD
Sunset Red Smoke	\$20,499 USD / \$24,949 CAD
Ghost White Metallic Smoke	\$20,499 USD / \$24,949 CAD
Granite Gray	\$20,499 USD / \$24,949 CAD
Smoky Quartz Metallic Pearl	\$20,999 USD / \$25,649 CAD

\*Does not include California emissions. Price subject to change.

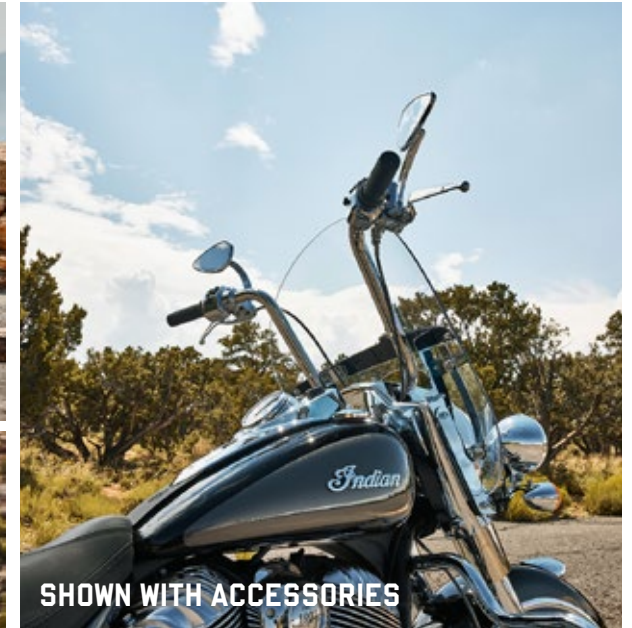


Specifications subject to change.



# INDIAN SPRINGFIELD LINEUP

PRESS IMAGES



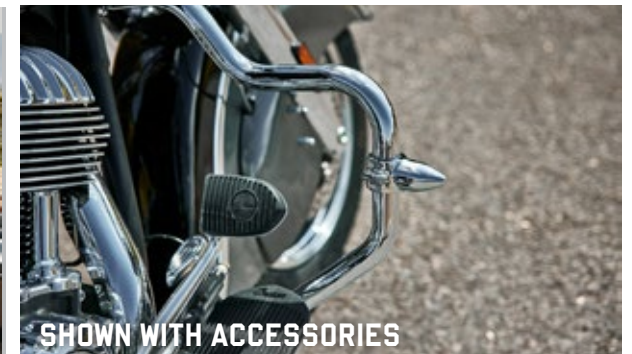
SHOWN WITH ACCESSORIES



SHOWN WITH ACCESSORIES



SHOWN WITH ACCESSORIES



SHOWN WITH ACCESSORIES





Shown with accessories

# INDIAN SPRINGFIELD SPECIFICATIONS

## ENGINE: THUNDERSTROKE 111

Engine Type	49° V-Twin
Transmission	6-speed/constant mesh/foot shift
Battery	12 volts / 18 amp/hour, 310 CCA
Bore x Stroke	3.976 in x 4.449 in (101 mm x 113 mm)
Charging System	42 amp max output
Clutch	Wet, multi-plate
Compression Ratio	9.5 : 1
Cooling System	Air
Displacement	111 cu in / 1811 cc
Exhaust	Split dual exhaust with crossover
Final Drive	Belt drive, 152 tooth
Fuel Capacity	5.5 gal (20.8 ltr)
Fuel System	Electronic fuel injection, closed loop/54 mm bore
Oil Capacity	6 qts (5.68 ltr)
Primary Drive	Gear drive wet clutch
Torque	119 ft-lbs at 3000 rpm (151 Nm at 3000 rpm)

## SUSPENSION

Front Suspension	Telescopic fork, 46 mm diameter, 4.7 in (119 mm) travel
Rear Suspension	Single shock 4.5 in (114 mm) travel, air adjustable

## CHASSIS

Weight (As Shipped)	797 lbs (362 kg)
Ground Clearance	5.6 in (142 mm)
GVWR	1385 lbs (628 kg)
Length	101.7 in (2583 mm)
Rake/Trail	25° / 5.2 in (133 mm)
Seat Height	26 in (660 mm)
Wheelbase	67 in (1701 mm)

## BRAKES

Brake System Type	Individual front and rear control with ABS
Front Braking System	Dual 300 mm floating rotor with 4-piston calipers
Rear Braking System	Single 300 mm floating rotor with 2-piston caliper

## WHEELS & TIRES

Front Tire	Metzeler® Cruisetec® 130/80B17 65H
Front Wheel	Highlight Machine Tour 17" x 3.5" w/ TPMS
Rear Tire	Metzeler® Cruisetec® 180/60B16 80H
Rear Wheel	Highlight Machine Tour 16" x 5.0" w/ TPMS

## COLORS & MSRP\*

Black Metallic / Titanium Metallic	\$22,999 USD / \$27,699 CAD
Bronze Pearl Metallic / Silver Quartz Metallic	\$22,999 USD / \$27,699 CAD

\*Does not include California emissions. Price subject to change.



Specifications subject to change.





# INDIAN SPRINGFIELD DARK HORSE SPECIFICATIONS

## ENGINE: THUNDERSTROKE 116

Engine Type	49° V-Twin
Transmission	6-speed/constant mesh/foot shift
Battery	12 volts / 18 amp/hour, 310 CCA
Bore x Stroke	4.063 in x 4.449 in (103.2 mm x 113 mm)
Charging System	42 amp max output
Clutch	Wet, multi-plate
Compression Ratio	11.0 : 1
Cooling System	Air
Displacement	116 cu in / 1890 cc
Exhaust	Split dual exhaust with crossover
Final Drive	Belt drive, 152 tooth
Fuel Capacity	5.5 gal (20.8 ltr)
Fuel System	Electronic fuel injection, closed loop/54 mm bore
Oil Capacity	6 qts (5.68 ltr)
Primary Drive	Gear drive wet clutch
Torque	126 ft-lbs at 2900 rpm (168 Nm at 2900 rpm)

## SUSPENSION

Front Suspension	Telescopic fork, 46 mm diameter, 4.7 in (119 mm) travel
Rear Suspension	Single shock 4.5 in (114 mm) travel, air adjustable

## CHASSIS

Weight (As Shipped)	758 lbs (344 kg)
Ground Clearance	5.1 in (130 mm)
GVWR	1385 lbs (628kg)
Length	99.3 in (2522 mm)
Rake/Trail	25° / 5.2 in (133 mm)
Seat Height	25.6 in (650 mm)
Wheelbase	67 in (1701 mm)

## BRAKES

Brake System Type	Individual front and rear control with ABS
Front Braking System	Dual 300 mm floating rotor with 4-piston calipers
Rear Braking System	Single 300 mm floating rotor with 2-piston caliper

## WHEELS & TIRES

Front Tire	Metzeler® Cruisetec® 130/60B19 66H
Front Wheel	10-Spoke Contrast Cut 19" x 3.5" w/ TPMS
Rear Tire	Metzeler® Cruisetec® 180/60R16 80H
Rear Wheel	10-Spoke Contrast Cut 16" x 5.0" w/ TPMS

## COLORS & MSRP\*

Black Smoke	\$24,999 USD / \$30,549 CAD
Sagebrush Smoke	\$25,499 USD / \$31,249 CAD

\*Does not include California emissions. Price subject to change.



Specifications subject to change.

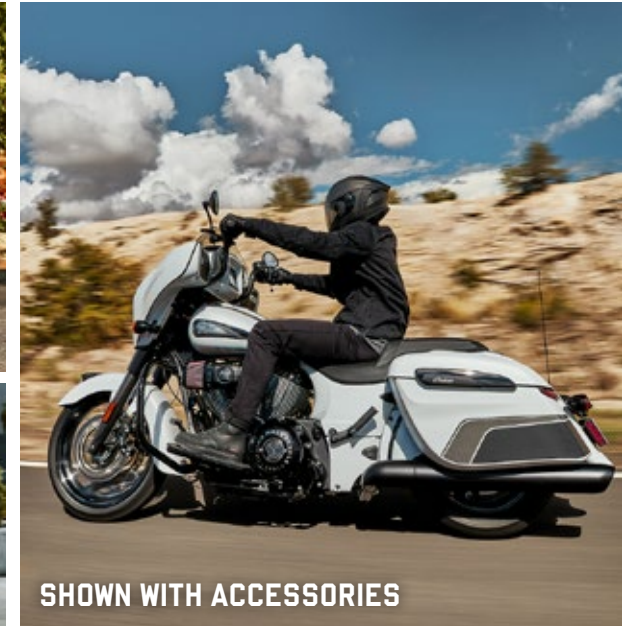


# CHIEFTAIN LINEUP

PRESS IMAGES



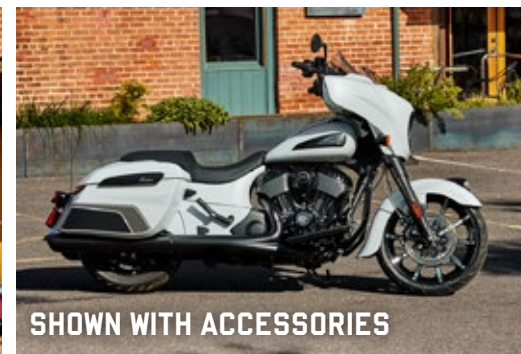
SHOWN WITH ACCESSORIES



SHOWN WITH ACCESSORIES



SHOWN WITH ACCESSORIES



SHOWN WITH ACCESSORIES



SHOWN WITH ACCESSORIES





# CHIEFTAIN SPECIFICATIONS

## 7 IN RIDE COMMAND INFOTAINMENT SYSTEM

Audio System: 100-Watt with AM/FM, Bluetooth® and USB input

## ENGINE: THUNDERSTROKE 111

Engine Type	49° V-Twin
Transmission	6-speed/constant mesh/foot shift
Battery	12 volts / 18 amp/hour, 310 CCA
Bore x Stroke	3.976 in x 4.449 in (101 mm x 113 mm)
Charging System	42 amp max output
Clutch	Wet, multi-plate
Compression Ratio	9.5 : 1
Cooling System	Air
Displacement	111 cu in / 1811 cc
Exhaust	Split dual exhaust with crossover
Final Drive	Belt drive, 152 tooth
Fuel Capacity	5.5 gal (20.8 ltr)
Fuel System	Electronic fuel injection, closed loop/54 mm bore
Oil Capacity	6 qts (5.68 ltr)
Primary Drive	Gear drive wet clutch
Torque	119 ft-lbs at 3000 rpm (151 Nm at 3000 rpm)

## SUSPENSION

Front Suspension	Telescopic fork, 46 mm diameter, 4.7 in (119 mm) travel
Rear Suspension	Single shock 4.5 in (114 mm) travel, air adjustable

## CHASSIS

Weight (As Shipped)	791 lbs (359 kg)
Ground Clearance	5.1 in (130 mm)
GVWR	1,385 lbs (628 kg)
Length	98.7 in (2506 mm)
Rake/Trail	25° / 5.9 in (150 mm)
Seat Height	25.6 in (650 mm)
Wheelbase	65.7 in (1668 mm)

## BRAKES

Brake System Type	Individual front and rear control with ABS
Front Braking System	Dual 300 mm floating rotor with 4-piston calipers
Rear Braking System	Single 300 mm floating rotor with 2-piston caliper

## WHEELS & TIRES

Front Tire	Metzeler® Cruisetec® 130/60B19 66H
Front Wheel	10-Spoke Cast Black 19" x 3.5"
Rear Tire	Metzeler® Cruisetec® 180/60R16 80H
Rear Wheel	10-Spoke Cast Black 16" x 5.0"

## COLOR & MSRP\*

Black Metallic	\$23,999 USD / \$29,449 CAD
----------------	-----------------------------

\*Does not include California emissions. Price subject to change.



Specifications subject to change.





# CHIEFTAIN DARK HORSE SPECIFICATIONS

## 7 IN RIDE COMMAND INFOTAINMENT SYSTEM

Audio System: 100-Watt with AM/FM, Bluetooth® and USB input  
 RIDE COMMAND+ includes traffic and weather overlays  
 Apple Carplay® Integration  
 GPS Navigation: Turn-by-turn directions, built-in points of interest  
 Customizable Route Builder: Add up to 100 way points

## ENGINE: THUNDERSTROKE 116

Engine Type	49° V-Twin
Transmission	6-speed/constant mesh/foot shift
Battery	12 volts / 18 amp/hour, 310 CCA
Bore x Stroke	4.063 in x 4.449 in (103.2 mm x 113 mm)
Charging System	42 amp max output
Clutch	Wet, multi-plate
Compression Ratio	11.0 : 1
Cooling System	Air / Oil
Displacement	116 cu in / 1890 cc
Exhaust	Split dual exhaust with crossover
Final Drive	Belt drive, 152 tooth
Fuel Capacity	5.5 gal (20.8 ltr)
Fuel System	Electronic fuel injection, closed loop/54 mm bore
Oil Capacity	6 qts (5.68 ltr)
Primary Drive	Gear drive wet clutch
Torque	126 ft-lbs at 2900 rpm (168 Nm at 2900 rpm)

## SUSPENSION

Front Suspension	Telescopic fork, 46 mm diameter, 4.7 in (119 mm) travel
Rear Suspension	Single shock 4.5 in (114 mm) travel, air adjustable

## CHASSIS

Weight (As Shipped)	791 lbs (359 kg)
Ground Clearance	5.1 in (130 mm)
GVWR	1,385 lbs (628 kg)
Length	98.7 in (2506 mm)
Rake/Trail	25° / 5.9 in (150 mm)
Seat Height	25.6 in (650 mm)
Wheelbase	65.7 in (1668 mm)

## BRAKES

Brake System Type	Individual front and rear control with ABS
Front Braking System	Dual 300 mm floating rotor with 4-piston calipers
Rear Braking System	Single 300 mm floating rotor with 2-piston caliper

## WHEELS & TIRES

Front Tire	Metzeler® Cruisetec® 130/60B19 66H
Front Wheel	10-Spoke Contrast Cut 19" x 3.5" w/ TPMS
Rear Tire	Metzeler® Cruisetec® 180/60R16 80H
Rear Wheel	10-Spoke Contrast Cut 16" x 5.0" w/ TPMS

## COLORS & MSRP\*

Black Smoke	\$29,999 USD / \$36,949 CAD
Black Smoke (with Audio)	\$31,249 USD / \$38,549 CAD
Ghost White Metallic Smoke with Graphics	\$30,749 USD / \$37,949 CAD
Ghost White Metallic Smoke with Graphics (with Audio)	\$31,999 USD / \$39,549 CAD
Granite Gray	\$30,749 USD / \$37,949 CAD
Granite Gray (with Audio)	\$31,999 USD / \$39,549 CAD
Sunset Red Smoke	\$30,749 USD / \$37,949 CAD
Sunset Red Smoke (with Audio)	\$31,999 USD / \$39,549 CAD
Sandstone Smoke	\$32,999 USD / \$40,799 CAD
Stealth Gray Azure	\$32,999 USD / \$40,799 CAD

\*Does not include California emissions. Price subject to change.







# CHIEFTAIN LIMITED SPECIFICATIONS

## 7 IN RIDE COMMAND INFOTAINMENT SYSTEM

Audio System: 100-Watt with AM/FM, Bluetooth® and USB input  
 RIDE COMMAND+ includes traffic and weather overlays  
 Apple Carplay® Integration  
 GPS Navigation: Turn-by-turn directions, built-in points of interest  
 Customizable Route Builder: Add up to 100 way points

## ENGINE: THUNDERSTROKE 116

Engine Type	49° V-Twin
Transmission	6-speed/constant mesh/foot shift
Battery	12 volts / 18 amp/hour, 310 CCA
Bore x Stroke	4.063 in x 4.449 in (103.2 mm x 113 mm)
Charging System	42 amp max output
Clutch	Wet, multi-plate
Compression Ratio	11.0 : 1
Cooling System	Air / Oil
Displacement	116 cu in / 1890 cc
Exhaust	Split dual exhaust with crossover
Final Drive	Belt drive, 152 tooth
Fuel Capacity	5.5 gal (20.8 ltr)
Fuel System	Electronic fuel injection, closed loop/54 mm bore
Oil Capacity	6 qts (5.68 ltr)
Primary Drive	Gear drive wet clutch
Torque	126 ft-lbs at 2900 rpm (168 Nm at 2900 rpm)

## SUSPENSION

Front Suspension	Telescopic fork, 46 mm diameter, 4.7 in (119 mm) travel
Rear Suspension	Single shock 4.5 in (114 mm) travel, air adjustable

## CHASSIS

Weight (As Shipped)	791 lbs (359 kg)
Ground Clearance	5.1 in (130 mm)
GVWR	1,385 lbs (628 kg)
Length	98.7 in (2506 mm)
Rake/Trail	25° / 5.9 in (150 mm)
Seat Height	25.6 in (650 mm)
Wheelbase	65.7 in (1668 mm)

## BRAKES

Brake System Type	Individual front and rear control with ABS
Front Braking System	Dual 300 mm floating rotor with 4-piston calipers
Rear Braking System	Single 300 mm floating rotor with 2-piston caliper

## WHEELS & TIRES

Front Tire	Metzeler® Cruisetec® 130/60B19 66H
Front Wheel	10-Spoke Contrast Cut 19" x 3.5" w/ TPMS
Rear Tire	Metzeler® Cruisetec® 180/60R16 80H
Rear Wheel	10-Spoke Contrast Cut 16" x 5.0" w TPMS

## COLORS & MSRP\*

Black Metallic	\$28,999 USD / \$36,249 CAD
Black Metallic (with Audio)	\$30,249 USD / \$37,849 CAD
Spirit Blue Metallic	\$29,749 USD / \$37,249 CAD
Spirit Blue Metallic (with Audio)	\$30,999 USD / \$38,849 CAD
Maroon Metallic with Graphics	\$29,749 USD / \$37,249 CAD
Maroon Metallic with Graphics (with Audio)	\$30,999 USD / \$38,849 CAD

\*Does not include California emissions. Price subject to change.





# INDIAN CHALLENGER LINEUP

PRESS IMAGES



SHOWN WITH ACCESSORIES



SHOWN WITH ACCESSORIES





# INDIAN CHALLENGER SPECIFICATIONS

## 7 IN RIDE COMMAND INFOTAINMENT SYSTEM

Premium Audio System: 100-Watt with AM/FM, Bluetooth® and USB input

## ENGINE: POWERPLUS

Engine Type	60° V-twin
Transmission	6-speed/constant mesh/foot shift
Battery	12 volts / 18 amp/hour, 310 CCA
Bore x Stroke	4.252 in x 3.799 in (108 mm x 96.5 mm)
Charging System	55 amp max output
Clutch	Wet, multi-plate with assist
Compression Ratio	11.0 : 1
Cooling System	Water
Displacement	108 cu in / 1768 cc
Exhaust	Split dual exhaust with resonator
Final Drive	Belt drive, 152 tooth
Fuel Capacity	6 gal (22.7 ltr)
Fuel System	Electronic fuel injection, closed loop/52 mm dual bore
Oil Capacity	5 qts (4.73 ltr)
Primary Drive	Gear drive wet clutch
Torque	128 ft-lbs at 3800 rpm (174 Nm at 3800 rpm)
Horsepower	122 hp

## SUSPENSION

Front Suspension	Telescopic fork, 43 mm diameter, 5.1 in (130 mm) travel
Rear Suspension	FOX® Single shock 4.5 in (114 mm) travel, hydraulic adjustable

## CHASSIS

Weight (As Shipped)	796 lbs (361 kg)
Ground Clearance	5.4 in (137 mm)
GVWR	1,385 lbs (628 kg)
Length	98.5 in (2501 mm)
Rake/Trail	25° / 5.9 in (150 mm)
Seat Height	26.5 in (672 mm)
Wheelbase	65.7 in (1668 mm)

## BRAKES

Brake System Type	Individual front and rear control with ABS
Front Braking System	Dual Brembo® 320 mm floating rotor with 4-piston calipers
Rear Braking System	Single Brembo® 298 mm floating rotor with 2-piston caliper

## WHEELS & TIRES

Front Tire	Metzeler® Cruisetec®, 130/60B19 66H
Front Wheel	Sport Cast Black 19" x 3.5"
Rear Tire	Metzeler® Cruisetec®, 180/60R16 80H
Rear Wheel	Sport Cast Black 16" x 5.0"

## COLORS & MSRP\*

Black Metallic	\$26,499 USD / \$33,549 CAD
Titanium Smoke	\$27,249 USD / \$34,549 CAD

\*Does not include California emissions. Price subject to change.



Specifications subject to change.





# INDIAN CHALLENGER DARK HORSE SPECIFICATIONS

## 7 IN RIDE COMMAND INFOTAINMENT SYSTEM

Premium Audio System: 100-Watt with AM/FM, Bluetooth® and USB input  
 RIDE COMMAND+ includes traffic and weather overlays  
 Apple Carplay® Integration  
 GPS Navigation: Turn-by-turn directions, built-in points of interest  
 Customizable Route Builder: Add up to 100 way points

## ENGINE: POWERPLUS

Engine Type	60° V-twin
Transmission	6-speed/constant mesh/foot shift
Battery	12 volts / 18 amp/hour, 310 CCA
Bore x Stroke	4.252 in x 3.799 in (108 mm x 96.5 mm)
Charging System	55 amp max output
Clutch	Wet, multi-plate with assist
Compression Ratio	11.0 : 1
Cooling System	Water
Displacement	108 cu in / 1768 cc
Exhaust	Split dual exhaust with resonator
Final Drive	Belt drive, 152 tooth
Fuel Capacity	6 gal (22.7 ltr)
Fuel System	Electronic fuel injection, closed loop/52 mm dual bore
Oil Capacity	5 qts (4.73 ltr)
Primary Drive	Gear drive wet clutch
Torque	128 ft-lbs at 3800 rpm (174 Nm at 3800 rpm)
Horsepower	122 hp

## SUSPENSION

Front Suspension	Telescopic fork, 43 mm diameter, 5.1 in (130 mm) travel
Rear Suspension	FOX® Single shock 4.5 in (114 mm) travel, hydraulic adjustable

## CHASSIS

Weight (As Shipped)	796 lbs (361 kg)
Ground Clearance	5.4 in (137 mm)
GVWR	1,385 lbs (628 kg)
Length	98.5 in (2501 mm)
Rake/Trail	25° / 5.9 in (150 mm)
Seat Height	26.5 in (672 mm)
Wheelbase	65.7 in (1668 mm)

## BRAKES

Brake System Type	Individual front and rear control with ABS
Front Braking System	Dual Brembo® 320 mm floating rotor with 4-piston calipers
Rear Braking System	Single Brembo® 298 mm floating rotor with 2-piston caliper

## WHEELS & TIRES

Front Tire	Metzeler® Cruisetec®, 130/60B19 66H
Front Wheel	Sport Contrast Cut 19" x 3.5" w/ TPMS
Rear Tire	Metzeler® Cruisetec®, 180/60R16 80H
Rear Wheel	Sport Contrast Cut 16" x 5.0" w/ TPMS

## COLORS & MSRP\*

Black Smoke	\$30,999 USD / \$39,249 CAD
Black Smoke (with Audio)	\$32,249 USD / \$40,849 CAD
Spirit Blue Smoke	\$32,499 USD / \$41,249 CAD
Spirit Blue Smoke (with Audio)	\$33,749 USD / \$42,849 CAD
Sunset Red Smoke	\$31,749 USD / \$40,249 CAD
Sunset Red Smoke (with Audio)	\$32,999 USD / \$41,849 CAD
Sunset Orange (with Audio)	\$33,999 USD / \$43,099 CAD
Storm Gray (with Audio)	\$33,999 USD / \$43,099 CAD
Smoky Quartz Metallic / Black Metallic (with Audio)	\$34,749 USD / \$44,099 CAD

\*Does not include California emissions. Price subject to change.



Specifications subject to change.





# INDIAN CHALLENGER LIMITED SPECIFICATIONS

## 7 IN RIDE COMMAND INFOTAINMENT SYSTEM

Premium Audio System: 100-Watt with AM/FM, Bluetooth® and USB input  
 RIDE COMMAND+ includes traffic and weather overlays  
 Apple Carplay® Integration  
 GPS Navigation: Turn-by-turn directions, built-in points of interest  
 Customizable Route Builder: Add up to 100 way points

## ENGINE: POWERPLUS

Engine Type	60° V-twin
Transmission	6-speed/constant mesh/foot shift
Battery	12 volts / 18 amp/hour, 310 CCA
Bore x Stroke	4.252 in x 3.799 in (108 mm x 96.5 mm)
Charging System	55 amp max output
Clutch	Wet, multi-plate with assist
Compression Ratio	11.0 : 1
Cooling System	Water
Displacement	108 cu in / 1768 cc
Exhaust	Split dual exhaust with resonator
Final Drive	Belt drive, 152 tooth
Fuel Capacity	6 gal (22.7 ltr)
Fuel System	Electronic fuel injection, closed loop/52 mm dual bore
Oil Capacity	5 qts (4.73 ltr)
Primary Drive	Gear drive wet clutch
Torque	128 ft-lbs at 3800 rpm (174 Nm at 3800 rpm)
Horsepower	122 hp

## SUSPENSION

Front Suspension	Telescopic fork, 43 mm diameter, 5.1 in (130 mm) travel
Rear Suspension	FOX® Single shock 4.5 in (114 mm) travel, hydraulic adjustable

## CHASSIS

Weight (As Shipped)	804 lbs (365 kg)
Ground Clearance	5.4 in (137 mm)
GVWR	1,385 lbs (628 kg)
Length	98.5 in (2501 mm)
Rake/Trail	25° / 5.9 in (150 mm)
Seat Height	26.5 in (672 mm)
Wheelbase	65.7 in (1668 mm)

## BRAKES

Brake System Type	Individual front and rear control with ABS
Front Braking System	Dual Brembo® 320 mm floating rotor with 4-piston calipers
Rear Braking System	Single Brembo® 298 mm floating rotor with 2-piston caliper

## WHEELS & TIRES

Front Tire	Metzeler® Cruisetec®, 130/60B19 66H
Front Wheel	Sport Contrast Cut 19" x 3.5" w/ TPMS
Rear Tire	Metzeler® Cruisetec®, 180/60R16 80H
Rear Wheel	Sport Contrast Cut 16" x 5.0" w/ TPMS

## COLORS & MSRP\*

Black Metallic	\$29,999 USD / \$37,999 CAD
Black Metallic (with Audio)	\$31,249 USD / \$39,599 CAD
Ghost White Metallic	\$31,499 USD / \$39,999 CAD
Ghost White Metallic (with Audio)	\$32,749 USD / \$41,599 CAD
Sunset Red Metallic	\$30,749 USD / \$38,999 CAD
Sunset Red Metallic (with Audio)	\$31,999 USD / \$40,599 CAD

\*Does not include California emissions. Price subject to change.



Specifications subject to change.





# INDIAN CHALLENGER ELITE SPECIFICATIONS

## 7 IN RIDE COMMAND INFOTAINMENT SYSTEM

Premium Audio System: 400-Watt with AM/FM, Bluetooth® and USB input  
 RIDE COMMAND+ includes traffic and weather overlays  
 GPS Navigation: Turn-by-turn directions, built-in points of interest  
 Customizable Route Builder: Add up to 100 way points

## ENGINE: POWERPLUS

Engine Type	60° V-twin
Transmission	6-speed/constant mesh/foot shift
Battery	12 volts / 18 amp/hour, 310 CCA
Bore x Stroke	4.252 in x 3.799 in (108 mm x 96.5 mm)
Charging System	55 amp max output
Clutch	Wet, multi-plate with assist
Compression Ratio	11.0 : 1
Cooling System	Water
Displacement	108 cu in / 1768 cc
Exhaust	Split dual exhaust with resonator
Final Drive	Belt drive, 152 tooth
Fuel Capacity	6 gal (22.7 ltr)
Fuel System	Electronic fuel injection, closed loop/52 mm dual bore
Oil Capacity	5 qts (4.73 ltr)
Primary Drive	Gear drive wet clutch
Torque	128 ft-lbs at 3800 rpm (174 Nm at 3800 rpm)
Horsepower	122 hp

## SUSPENSION

Front Suspension	Telescopic fork, 43 mm diameter, 5.1 in (130 mm) travel
Rear Suspension	FOX® single shock w/ electronically controlled hyd adjust / 4.5" (114mm)

## CHASSIS

Weight (As Shipped)	804 lbs (365 kg)
Ground Clearance	5.4 in (137 mm)
GVWR	1,385 lbs (628 kg)
Length	98.5 in (2501 mm)
Rake/Trail	25° / 5.9 in (150 mm)
Seat Height	26.5 in (672 mm)
Wheelbase	65.7 in (1668 mm)

## BRAKES

Brake System Type	Individual front and rear control with ABS
Front Braking System	Dual Brembo® 320 mm floating rotor with 4-piston calipers
Rear Braking System	Single Brembo® 298 mm floating rotor with 2-piston caliper

## WHEELS & TIRES

Front Tire	Metzeler® Cruisetec®, 130/60B19 66H
Front Wheel	5 Spoke Precision Cut 19" x 3.5" w/ TPMS
Rear Tire	Metzeler® Cruisetec®, 180/60R16 80H
Rear Wheel	Precision Cut 16" x 5.0" w/ TPMS

## COLOR & MSRP\*

Charcoal Candy / Black Candy \$38,499 USD / \$48,699 CAD

\*Does not include California emissions. Price subject to change.

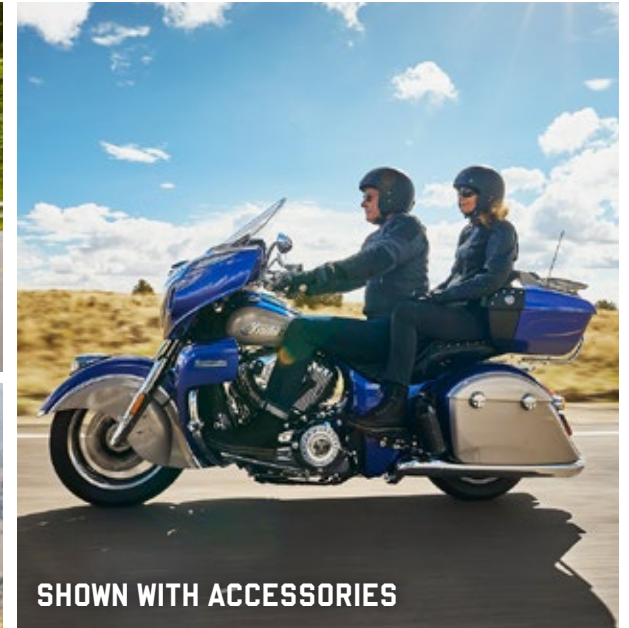


Specifications subject to change.



# ROADMASTER LINEUP

PRESS IMAGES







# ROADMASTER SPECIFICATIONS

## 7 IN RIDE COMMAND INFOTAINMENT SYSTEM

Audio System: 100-Watt with AM/FM, Bluetooth® and USB input  
 RIDE COMMAND+ includes traffic and weather overlays  
 Apple Carplay® Integration  
 GPS Navigation: Turn-by-turn directions, built-in points of interest  
 Customizable Route Builder: Add up to 100 way points

## ENGINE: THUNDERSTROKE 116

Engine Type	49° V-Twin
Transmission	6-speed/constant mesh/foot shift
Battery	12 volts / 18 amp/hour, 310 CCA
Bore x Stroke	4.063 in x 4.449 in (103.2 mm x 113 mm)
Charging System	42 amp max output
Clutch	Wet, multi-plate
Compression Ratio	11.0 : 1
Cooling System	Air / Oil
Displacement	116 cu in / 1890 cc
Exhaust	Split dual exhaust with crossover
Final Drive	Belt drive, 152 tooth
Fuel Capacity	5.5 gal (20.8 ltr)
Fuel System	Electronic fuel injection, closed loop/54 mm bore
Oil Capacity	6 qts (5.68 ltr)
Primary Drive	Gear drive wet clutch
Torque	126 ft-lbs at 2900 rpm (168 Nm at 2900 rpm)

## SUSPENSION

Front Suspension	Telescopic fork, 46 mm diameter, 4.7 in (119 mm) travel
Rear Suspension	Single shock 4.5 in (114 mm) travel, air adjustable

## CHASSIS

Weight (As Shipped)	877 lbs (398 kg)
Ground Clearance	5.5 in (140 mm)
GVWR	1,385 lbs (628 kg)
Length	104.6 in (2656 mm)
Rake/Trail	25° / 5.9 in (150 mm)
Seat Height	26.5 in (673 mm)
Wheelbase	65.7 in (1668 mm)

## BRAKES

Brake System Type	Individual front and rear control with ABS
Front Braking System	Dual 300 mm floating rotor with 4-piston calipers
Rear Braking System	Single 300 mm floating rotor with 2-piston caliper

## WHEELS & TIRES

Front Tire	Metzeler® Cruisetec® 130/80B17 65H
Front Wheel	Highly Machined Tour 17" x 3.5" w/ TPMS
Rear Tire	Metzeler® Cruisetec® 180/60R16 80H
Rear Wheel	Highly Machined Tour 16" x 5.0" w/ TPMS

## COLORS & MSRP\*

Black Metallic	\$32,999 USD / \$39,999 CAD
Black Metallic (with Audio)	\$34,499 USD / \$41,899 CAD
Black Metallic / Titanium Metallic	\$34,499 USD / \$41,999 CAD
Black Metallic / Titanium Metallic (with Audio)	\$35,999 USD / \$43,899 CAD
Spirit Blue Metallic / Silver Quartz Metallic	\$34,499 USD / \$41,999 CAD
Spirit Blue Metallic / Silver Quartz Metallic (with Audio)	\$35,999 USD / \$43,899 CAD

\*Does not include California emissions. Price subject to change.



Specifications subject to change.





# ROADMASTER DARK HORSE SPECIFICATIONS

## 7 IN RIDE COMMAND INFOTAINMENT SYSTEM

Audio System: 100-Watt with AM/FM, Bluetooth® and USB input  
 RIDE COMMAND+ includes traffic and weather overlays  
 Apple Carplay® Integration  
 GPS Navigation: Turn-by-turn directions, built-in points of interest  
 Customizable Route Builder: Add up to 100 way points

## ENGINE: THUNDERSTROKE 116

Engine Type	49° V-Twin
Transmission	6-speed/constant mesh/foot shift
Battery	12 volts / 18 amp/hour, 310 CCA
Bore x Stroke	4.063 in x 4.449 in (103.2 mm x 113 mm)
Charging System	42 amp max output
Clutch	Wet, multi-plate
Compression Ratio	11.0 : 1
Cooling System	Air / Oil
Displacement	116 cu in / 1890 cc
Exhaust	Split dual exhaust with crossover
Final Drive	Belt drive, 152 tooth
Fuel Capacity	5.5 gal (20.8 ltr)
Fuel System	Electronic fuel injection, closed loop/54 mm bore
Oil Capacity	6 qts (5.68 ltr)
Primary Drive	Gear drive wet clutch
Torque	126 ft-lbs at 2900 rpm (168 Nm at 2900 rpm)

## SUSPENSION

Front Suspension	Telescopic fork, 46 mm diameter, 4.7 in (119 mm) travel
Rear Suspension	Single shock 4.5 in (114 mm) travel, air adjustable

## CHASSIS

Weight (As Shipped)	858 lbs (389 kg)
Ground Clearance	5.1 in (130 mm)
GVWR	1,385 lbs (628 kg)
Length	102.1 in (2593 mm)
Rake/Trail	25° / 5.9 in (150 mm)
Seat Height	26.5 in (673 mm)
Wheelbase	65.7 in (1668 mm)

## BRAKES

Brake System Type	Individual front and rear control with ABS
Front Braking System	Dual 300 mm floating rotor with 4-piston calipers
Rear Braking System	Single 300 mm floating rotor with 2-piston caliper

## WHEELS & TIRES

Front Tire	Metzeler® Cruisetec® 130/60B19 66H
Front Wheel	10-Spoke Contrast Cut 19" x 3.5" w/ TPMS
Rear Tire	Metzeler® Cruisetec® 180/60R16 80H
Rear Wheel	10-Spoke Contrast Cut 16" x 5.0" w/ TPMS

## COLORS & MSRP\*

Black Smoke	\$32,999 USD / \$39,999 CAD
Black Smoke (with Audio)	\$34,499 USD / \$41,899 CAD
Maroon Metallic	\$33,749 USD / \$40,999 CAD
Maroon Metallic (with Audio)	\$35,249 USD / \$42,899 CAD

\*Does not include California emissions. Price subject to change.



Specifications subject to change.





# ROADMASTER LIMITED SPECIFICATIONS

## 7 IN RIDE COMMAND INFOTAINMENT SYSTEM

Premium Audio System: 100-Watt with AM/FM, Bluetooth® and USB input  
 RIDE COMMAND+ includes traffic and weather overlays  
 Apple Carplay® Integration  
 GPS Navigation: Turn-by-turn directions, built-in points of interest  
 Customizable Route Builder: Add up to 100 way points

## ENGINE: THUNDERSTROKE 116

Engine Type	49° V-Twin
Transmission	6-speed/constant mesh/foot shift
Battery	12 volts / 18 amp/hour, 310 CCA
Bore x Stroke	4.063 in x 4.449 in (103.2 mm x 113 mm)
Charging System	42 amp max output
Clutch	Wet, multi-plate
Compression Ratio	11.0 : 1
Cooling System	Air / Oil
Displacement	116 cu in / 1890 cc
Exhaust	Split dual exhaust with crossover
Final Drive	Belt drive, 152 tooth
Fuel Capacity	5.5 gal (20.8 ltr)
Fuel System	Electronic fuel injection, closed loop/54 mm bore
Oil Capacity	6 qts (5.68 ltr)
Primary Drive	Gear drive wet clutch
Torque	126 ft-lbs at 2900 rpm (168 Nm at 2900 rpm)

## SUSPENSION

Front Suspension	Telescopic fork, 46 mm diameter, 4.7 in (119 mm) travel
Rear Suspension	Single shock 4.5 in (114 mm) travel, air adjustable

## CHASSIS

Weight (As Shipped)	858 lbs (389 kg)
Ground Clearance	5.1 in (130 mm)
GVWR	1,385 lbs (628 kg)
Length	102.1 in (2593 mm)
Rake/Trail	25° / 5.9 in (150 mm)
Seat Height	26.5 in (673 mm)
Wheelbase	65.7 in (1668 mm)

## BRAKES

Brake System Type	Individual front and rear control with ABS
Front Braking System	Dual 300 mm floating rotor with 4-piston calipers
Rear Braking System	Single 300 mm floating rotor with 2-piston caliper

## WHEELS & TIRES

Front Tire	Metzeler® Cruisetec® 130/60B19 61H
Front Wheel	10-Spoke Contrast Cut 19" x 3.5" w/ TPMS
Rear Tire	Metzeler® Cruisetec® 180/60R16 80H
Rear Wheel	10-Spoke Contrast Cut 16" x 5.0" w/ TPMS

## COLORS & MSRP\*

Spirit Blue Metallic	\$32,999 USD / \$39,999 CAD
Spirit Blue Metallic (with Audio)	\$34,499 USD / \$41,899 CAD
Black Azure Crystal	\$32,999 USD / \$39,999 CAD
Black Azure Crystal (with Audio)	\$34,499 USD / \$41,899 CAD

\*Does not include California emissions. Price subject to change.



Specifications subject to change.



# INDIAN PURSUIT LINEUP

PRESS IMAGES







Shown with accessories

# INDIAN PURSUIT DARK HORSE SPECIFICATIONS

## 7 IN RIDE COMMAND INFOTAINMENT SYSTEM

Premium Audio System: 100-Watt with AM/FM, Bluetooth® and USB input  
 RIDE COMMAND+ including traffic and weather overlays  
 Apple Carplay® Integration  
 GPS Navigation: Turn-by-turn directions, built-in points of interest  
 Customizable Route Builder: Add up to 100 way points

## ENGINE: POWERPLUS

Engine Type	60° V-twin
Transmission	6-speed/constant mesh/foot shift
Battery	12 volts / 18 amp/hour, 310 CCA
Bore x Stroke	4.252 in x 3.799 in (108 mm x 96.5 mm)
Charging System	55 amp max output
Clutch	Wet, multi-plate with assist
Compression Ratio	11.0 : 1
Cooling System	Water
Displacement	108 cu in / 1768 cc
Exhaust	Split dual exhaust with resonator
Final Drive	Belt drive, 152 tooth
Fuel Capacity	6 gal (22.7 ltr)
Fuel System	Electronic fuel injection, closed loop/52 mm dual bore
Oil Capacity	5 qts (4.73 ltr)
Primary Drive	Gear drive wet clutch
Torque	128 ft-lbs at 3800 rpm (174 Nm at 3800 rpm)
Horsepower	122 hp

## SUSPENSION

Front Suspension	Telescopic fork, 43 mm diameter, 5.1 in (130 mm) travel
Rear Suspension	FOX® Single shock 4.5 in (114 mm) travel, hydraulic adjustable

## CHASSIS

Weight (As Shipped)	877 lbs (398 kg)
Ground Clearance	5.4 in (137 mm)
GVWR	102.7 in (2609 mm)
Length	98.5 in (2501 mm)
Rake/Trail	25° / 5.9 in (150 mm)
Seat Height	26.5 in (672 mm)
Wheelbase	65.7 in (1668 mm)

## BRAKES

Brake System Type	Individual front and rear control with ABS
Front Braking System	Dual Brembo® 320 mm floating rotor with 4-piston calipers
Rear Braking System	Single Brembo® 298 mm floating rotor with 2-piston caliper

## WHEELS & TIRES

Front Tire	Metzeler® Cruisetec®, 130/60B19 66H
Front Wheel	Sport Contrast Cut 19" x 3.5" with tire pressure monitoring
Rear Tire	Metzeler® Cruisetec®, 180/60R16 80H
Rear Wheel	Sport Contrast Cut 16" x 5.0" with tire pressure monitoring

## COLORS & MSRP\*

Black Smoke	\$35,999 USD / \$45,599 CAD
Black Smoke (with Audio)	\$37,499 USD / \$47,499 CAD
Stealth Gray	\$36,749 USD / \$46,599 CAD
Stealth Gray (with Audio)	\$38,249 USD / \$48,499 CAD
Springfield Blue	\$37,499 USD / \$47,599 CAD
Springfield Blue (with Audio)	\$38,999 USD / \$49,499 CAD
Ghost White Metallic Smoke (with Audio)	\$39,999 USD / \$50,749 CAD

\*Does not include California emissions. Price subject to change.



Specifications subject to change.





# INDIAN PURSUIT LIMITED SPECIFICATIONS

## 7 IN RIDE COMMAND INFOTAINMENT SYSTEM

Premium Audio System: 100-Watt with AM/FM, Bluetooth® and USB input  
 RIDE COMMAND+ including traffic and weather overlays  
 Apple Carplay® Integration  
 GPS Navigation: Turn-by-turn directions, built-in points of interest  
 Customizable Route Builder: Add up to 100 way points

## ENGINE: POWERPLUS

Engine Type	60° V-twin
Transmission	6-speed/constant mesh/foot shift
Battery	12 volts / 18 amp/hour, 310 CCA
Bore x Stroke	4.252 in x 3.799 in (108 mm x 96.5 mm)
Charging System	55 amp max output
Clutch	Wet, multi-plate with assist
Compression Ratio	11.0 : 1
Cooling System	Water
Displacement	108 cu in / 1768 cc
Exhaust	Split dual exhaust with resonator
Final Drive	Belt drive, 152 tooth
Fuel Capacity	6 gal (22.7 ltr)
Fuel System	Electronic fuel injection, closed loop/52 mm dual bore
Oil Capacity	5 qts (4.73 ltr)
Primary Drive	Gear drive wet clutch
Torque	128 ft-lbs at 3800 rpm (174 Nm at 3800 rpm)
Horsepower	122 hp

## SUSPENSION

Front Suspension	Telescopic fork, 43 mm diameter, 5.1 in (130 mm) travel
Rear Suspension	FOX® Single shock 4.5 in (114 mm) travel, hydraulic adjustable

## CHASSIS

Weight (As Shipped)	877 lbs (398 kg)
Ground Clearance	5.4 in (137 mm)
GVWR	102.7 in (2609 mm)
Length	98.5 in (2501 mm)
Rake/Trail	25° / 5.9 in (150 mm)
Seat Height	26.5 in (672 mm)
Wheelbase	65.7 in (1668 mm)

## BRAKES

Brake System Type	Individual front and rear control with ABS
Front Braking System	Dual Brembo® 320 mm floating rotor with 4-piston calipers
Rear Braking System	Single Brembo® 298 mm floating rotor with 2-piston caliper

## WHEELS & TIRES

Front Tire	Metzeler® Cruisetec®, 130/60B19 66H
Front Wheel	Sport Contrast Cut 19" x 3.5" with tire pressure monitoring
Rear Tire	Metzeler® Cruisetec®, 180/60R16 80H
Rear Wheel	Sport Contrast Cut 16" x 5.0" with tire pressure monitoring

## COLORS & MSRP\*

Black Metallic	\$34,999 USD / \$44,299 CAD
Black Metallic (with Audio)	\$36,499 USD / \$46,199 CAD
Sunset Red Metallic	\$35,749 USD / \$45,299 CAD
Sunset Red Metallic (with Audio)	\$37,249 USD / \$47,199 CAD
Spirit Blue Metallic	\$36,499 USD / \$46,299 CAD
Spirit Blue Metallic (with Audio)	\$37,999 USD / \$48,199 CAD
Titanium / Black Metallic	\$36,499 USD / \$46,299 CAD
Titanium / Black Metallic (with Audio)	\$37,999 USD / \$48,199 CAD
Copper Metallic (with Audio)	\$38,999 USD / \$49,449 CAD

\*Does not include California emissions. Price subject to change



Specifications subject to change.



Always wear a helmet, protective eyewear and clothing and insist your passenger does the same. Ride within the limits of the law and your own abilities. Read and understand your owner's manual. Never ride under the influence of drugs or alcohol. Unless noted, trademarks are the property of Indian Motorcycle International, LLC. Akrapovič is a registered trademark of Igor Akrapovic. Apple CARPLAY® is a registered trademark of Apple Inc. Bluetooth® is a registered trademark of Bluetooth Sig, Inc. Brembo® is a registered trademark of Brembo S.p.a. Società Per Azioni. CruzTOOLS® is a registered trademark of CYCOACTIVE, Inc. FOX® is a registered trademark of Fox Factory Inc. Metzeler®, CRUISETEC®, Sportec® and Pirelli® are registered trademarks of Pirelli Tyre S.P.A. Öhlins® is a registered trademark of Öhlins Racing Ab Corporation Sweden. Corp of Italy. KYB® is a registered trademark of KYB Corporation. Sachs® is a registered trademark of ZF Friedrichshafen AG. 100% is a registered trademark of Saule, LLC.

Prices, fitment and availability are subject to change. © 2023 Indian Motorcycle International, LLC. All rights reserved.

